

CERTIFICATE OF LOCATION OF GOVERNMENT CORNER

County of Anoka

State of Minnesota

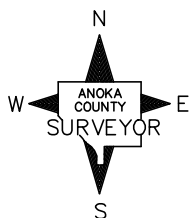
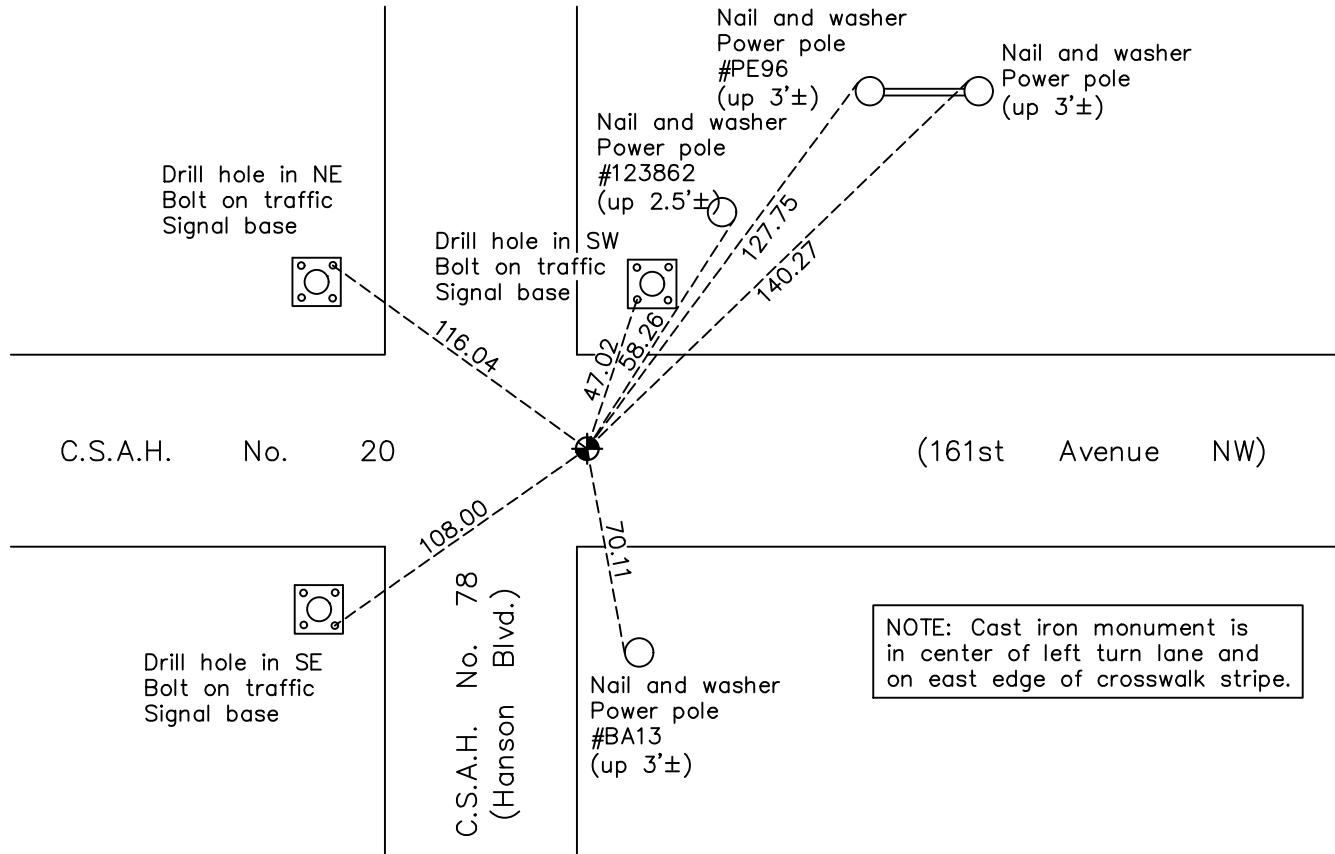
West 1/4 Corner of Sec. 14 Township 32 Range 24

On the 8th day of February, 1963, the described corner was evidenced by area resurvey

and to perpetuate the location of said corner, at the exact location thereof, a permanent marker was placed consisting of a cast iron monument

AND on the 16th day of October, 2020, said permanent marker was found flush with the surface and the ties were updated.

Updated reference ties are as shown below.



N.A.D. 1983 Coordinates
(1996 Adjustment)

County Project Coordinates	
Northing	182884.2254
Easting	489882.0485
Date	8/04/00

Revision Date
01/29/21

I hereby certify that this United States public land survey monument record is correct and complete to the best of my knowledge and belief.
David M Zieglsmeier Date 7/28/21
 David M. Zieglsmeier, Anoka County Surveyor
 Minnesota License Number 46179

HISTORY OF GOVERNMENT CORNER

Page No. 54

County of Anoka

State of Minnesota

West 1/4 Corner of Sec. 14 Township 32 Range 24

CORNER HISTORY:

February 8, 1963 – Set railroad spike in blacktop using area resurvey and established ties to monument.

April 19, 1963 – Replaced railroad spike with a cast iron monument and updated ties. Set P.K. nails 2.00' north and east of monument.

August 17, 1964 – Found cast iron monument and updated ties.

July 11, 1968 – Found cast iron monument and updated ties.

June 22, 1972 – Found cast iron monument and updated ties.

June 1, 1976 – Found cast iron monument and updated ties.

June 4, 1979 – Found cast iron monument and updated ties.

June 17, 1985 – Set construction ties prior to road construction.

April 30, 1986 – Set cast iron monument flush with surface after road construction using construction ties. Also set P.K. nails 2.00' north and east of monument. Updated ties.

October 20, 1987 – Found cast iron monument and updated ties.

July 15, 1993 – Found cast iron monument and updated ties.

August 4, 2000 – Found cast iron monument and established NAD 1983 (1996 Adjustment) Anoka County Project Coordinates by Static GPS methods. Updated ties.

October 28, 2010 – Found cast iron monument flush with the surface and updated ties.

June 16, 2015 – Found cast iron monument broken. Set a 16" cast iron monument on top of broken CIM and flush with the surface and updated ties.

January 25, 2016 – Found cast iron monument flush with the surface and updated ties.

October 16, 2020 – Found cast iron monument flush with the surface and updated ties.