

# CERTIFICATE OF LOCATION OF GOVERNMENT CORNER

County of Anoka

State of Minnesota

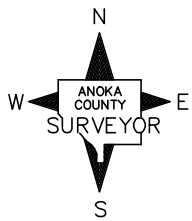
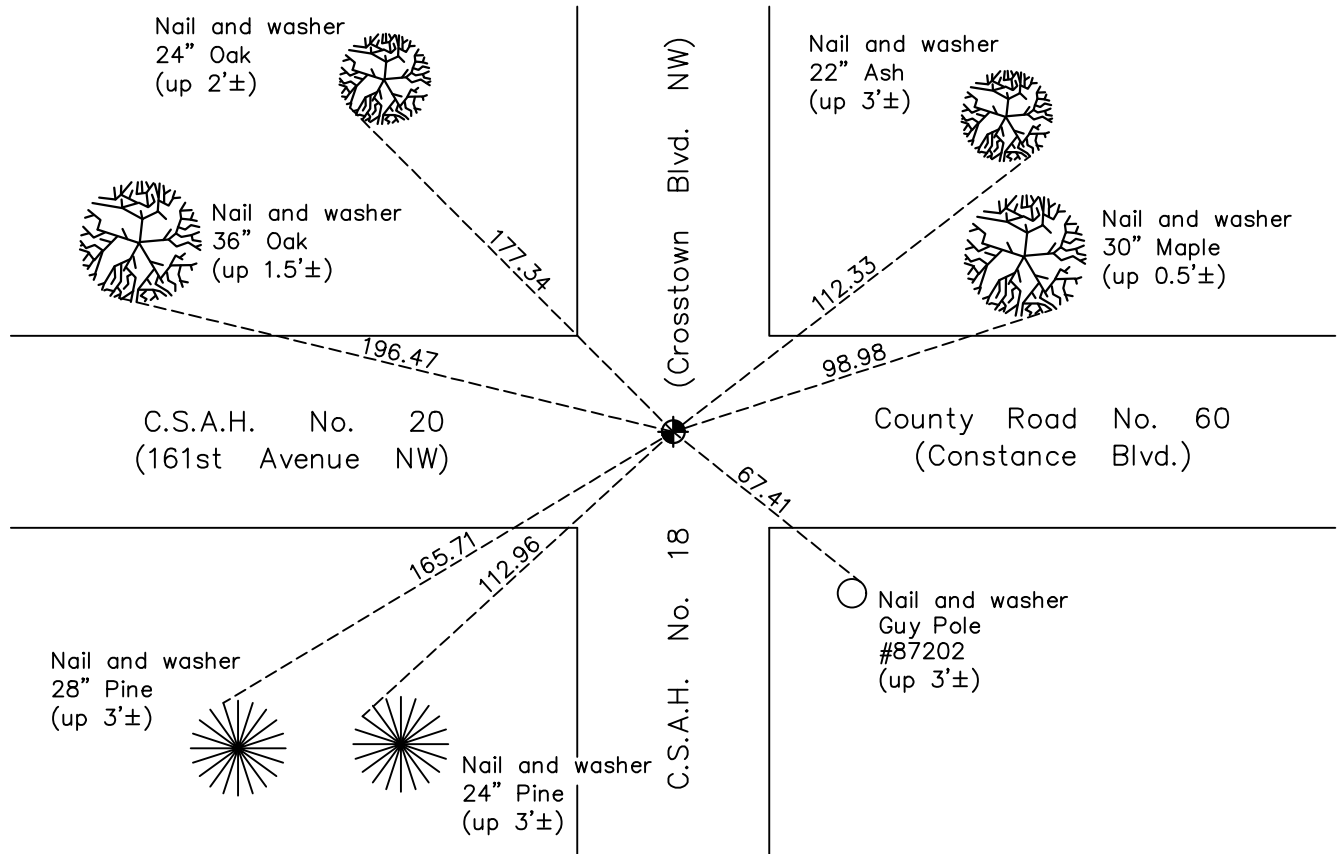
## East 1/4 Corner of Sec. 14 Township 32 Range 24

On the 12th day of September, 1962, the described corner was evidenced by an old rusty  
1' carriage bolt

and to perpetuate the location of said corner, at the exact location thereof, a permanent marker  
was placed consisting of a cast iron monument

AND on the 16th day of October, 2020, said permanent marker was found down 0.1'±  
and the ties were updated.

Updated reference ties are as shown below.



Revision Date  
01/29/21

N.A.D. 1983 Coordinates  
 (1996 Adjustment)

County Project Coordinates	
Northing	<u>182765.1003</u>
Easting	<u>495134.4569</u>
Date	<u>10/12/00</u>

I hereby certify that this United States public land survey monument record is correct and complete to the best of my knowledge and belief.  
*David M Zieglermeier* Date 7/28/21  
David M. Zieglermeier, Anoka County Surveyor  
 Minnesota License Number 46179

# HISTORY OF GOVERNMENT CORNER

County of Anoka

State of Minnesota

## East 1/4 Corner of Sec. 14 Township 32 Range 24

### **CORNER HISTORY:**

September 12, 1962 – Found old 1' long carriage bolt down 1.5'. Dug 3' below bolt and found no further evidence. Replaced bolt with a cast iron monument flush with blacktop. Established ties to monument.

August 14, 1964 – Found cast iron monument and updated ties.

July 11, 1968 – Found cast iron monument and updated ties.

June 21, 1972 – Found cast iron monument and updated ties.

June 1, 1976 – Found cast iron monument and updated ties.

June 4, 1979 – Found cast iron monument and updated ties.

June 24, 1982 – Found cast iron monument and updated ties.

June 18, 1985 – Updated ties prior to road construction.

April 30, 1986 – Found cast iron monument undisturbed after road construction. Set P.K. nails 2.00' north and east of monument and updated ties.

July 15, 1993 – Found cast iron monument and updated ties.

October 12, 2000 – Found cast iron monument and established NAD 1983 (1996 Adjustment) Anoka County Project Coordinates by Static GPS methods. Updated ties.

October 28, 2010 – Found cast iron monument flush with the surface and with top worn. Updated ties.

March 20, 2012 – Replaced worn cast iron monument with a new cast iron monument. Verified location of corner by Static GPS methods and updated ties.

January 27, 2016 – Found cast iron monument down 0.1'± and updated ties.

October 16, 2020 – Found cast iron monument down 0.1'± and updated ties.