

CERTIFICATE OF LOCATION OF GOVERNMENT CORNER

County of Anoka

State of Minnesota

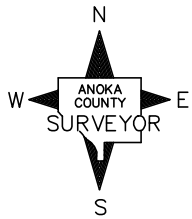
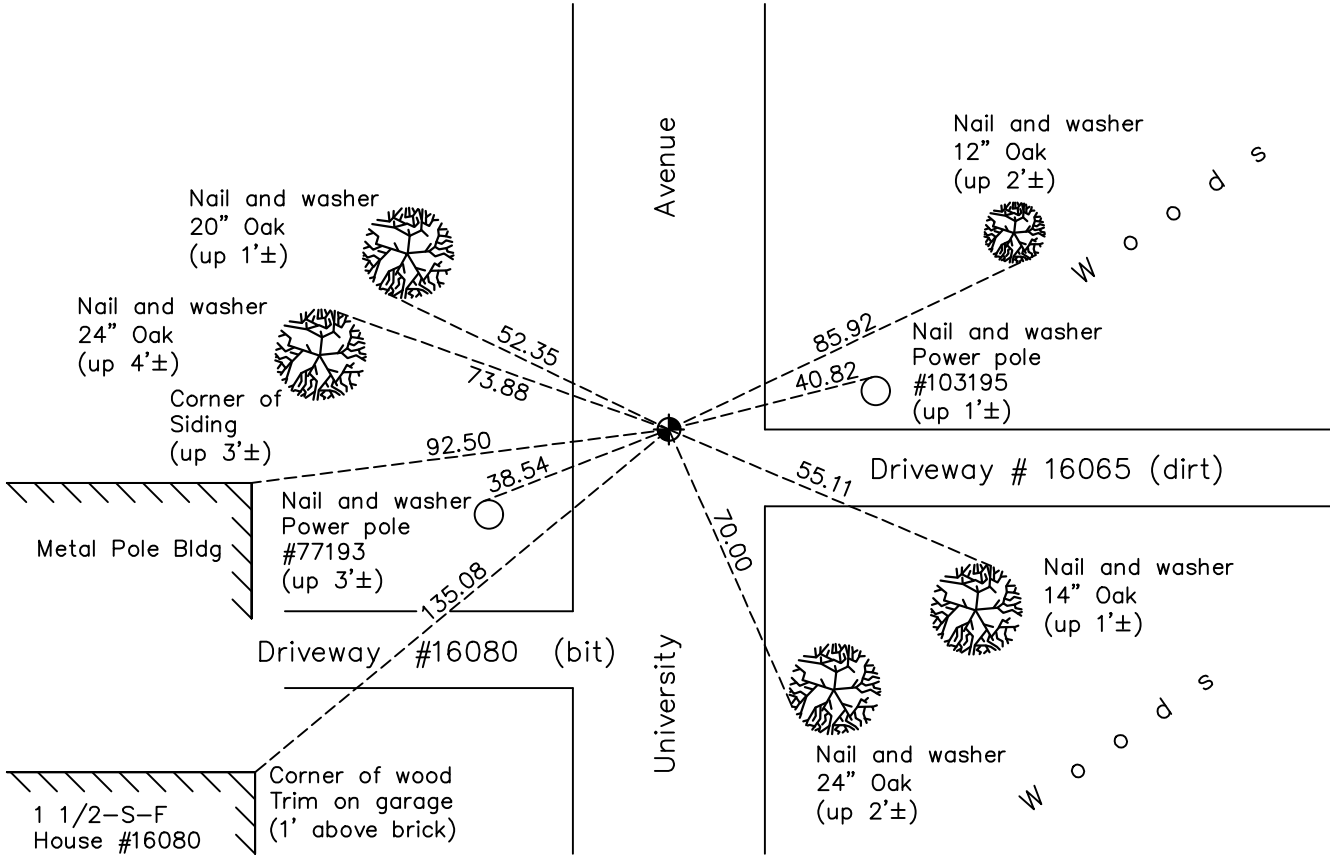
East 1/4 Corner of Sec. 13 Township 32 Range 24

On the 4th day of September, 1962, the described corner was evidenced by area resurvey

and to perpetuate the location of said corner, at the exact location thereof, a permanent marker was placed consisting of a cast iron monument

AND on the 6th day of October, 2020, said permanent marker was found broken. Replaced with a new CIM, set flush to surface, and the ties were updated.

Updated reference ties are as shown below.



Revision Date
 01/29/21

N.A.D. 1983 Coordinates
 (1996 Adjustment)

County Project Coordinates	
Northing	182674.5133
Easting	500373.9545
Date	10/23/00

I hereby certify that this United States public land survey monument record is correct and complete to the best of my knowledge and belief.
David M Zieglermeier Date 7/28/21
 David M. Zieglermeier, Anoka County Surveyor
 Minnesota License Number 46179

HISTORY OF GOVERNMENT CORNER

County of Anoka

State of Minnesota

East 1/4 Corner of Sec. 13 Township 32 Range 24

CORNER HISTORY:

September 4, 1962 – Set cast iron monument up 0.2' using area resurvey and established ties to monument.

July 23, 1968 – Found cast iron monument and updated ties.

June 22, 1972 – Found cast iron monument and updated ties.

June 1, 1976 – Found cast iron monument and updated ties.

June 4, 1979 – Found cast iron monument and updated ties.

March 8, 1983 – Straightened cast iron monument, flush with the surface, and updated ties.

August 2, 1988 – Replaced cast iron monument, removed during driveway construction, with a new cast iron monument. Updated ties.

October 10, 1991 – Set construction ties prior to road construction.

August 14, 1992 – Set cast iron monument after road construction using ties. Updated ties.

November 30, 1993 – Set cast iron monument after road construction using ties. Updated ties.

October 23, 2000 – Found cast iron monument and established NAD 1983 (1996 Adjustment) Anoka County Project Coordinates by Static GPS methods. Updated ties.

January 24, 2011 – Found cast iron monument and updated ties.

January 27, 2016 – Found cast iron monument and updated ties.

October 6, 2020 – Found CIM broken. Replaced with a new CIM set flush to surface. Updated ties.