

# CERTIFICATE OF LOCATION OF GOVERNMENT CORNER

County of Anoka

State of Minnesota

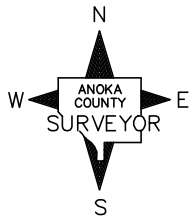
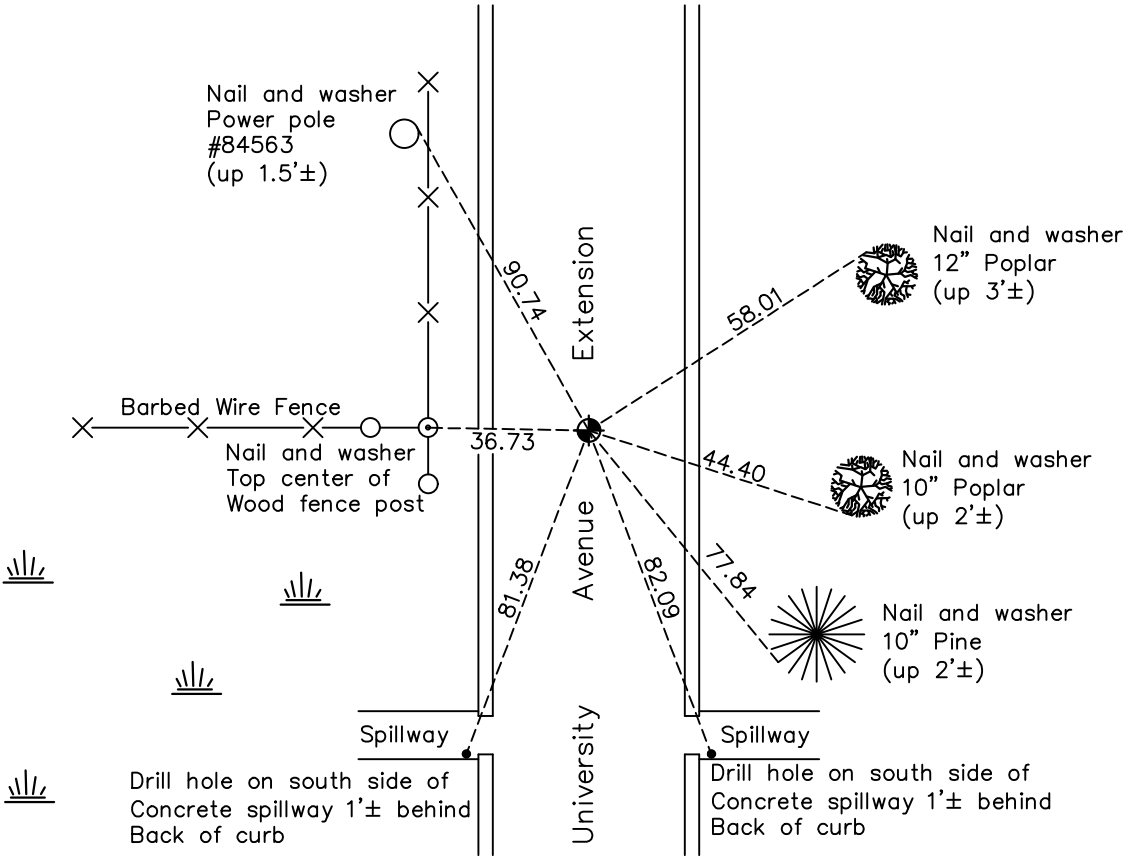
## Northeast Corner of Sec. 24 Township 32 Range 24

On the 17th day of July, 1962, the described corner was evidenced by area resurvey

and to perpetuate the location of said corner, at the exact location thereof, a permanent marker was placed consisting of a cast iron monument

AND on the 21st day of October, 2020, said permanent marker was found flush and the ties were updated.

Updated reference ties are as shown below.



Revision Date

01/29/21

N.A.D. 1983 Coordinates  
(1996 Adjustment)

County Project Coordinates	
Northing	180062.8873
Easting	500354.9204
Date	10/23/00

I hereby certify that this United States public land survey monument record is correct and complete to the best of my knowledge and belief.

*David M. Zieglsmeier* Date 7/28/21

David M. Zieglsmeier, Anoka County Surveyor  
Minnesota License Number 46179

# HISTORY OF GOVERNMENT CORNER

County of Anoka

State of Minnesota

## Northeast Corner of Sec. 24 Township 32 Range 24

### **CORNER HISTORY:**

July 17, 1962 - Set cast iron monument down 0.5' using area resurvey and established ties to monument.

August 17, 1964 - Found cast iron monument and updated ties.

July 15, 1968 - Found cast iron monument down 0.8'± and updated ties.

June 27, 1972 - Found cast iron monument and updated ties.

June 2, 1976 - Replaced broken cast iron monument with a new cast iron monument and updated ties.

June 4, 1979 - Found cast iron monument and updated ties.

July 2, 1982 - Found cast iron monument and updated ties.

June 4, 1985 - Found cast iron monument and updated ties.

August 2, 1988 - Found cast iron monument and updated ties.

July 10, 1993 - Found cast iron monument and updated ties.

October 26, 1993 - Updated ties and removed cast iron monument prior to road construction.

June 29, 1994 - Set cast iron monument after road construction using ties. Updated ties.

October 23, 2000 - Found cast iron monument and established NAD 1983 (1996 Adjustment) Anoka County Project Coordinates by Static GPS methods. Updated ties.

January 27, 2011 - Found cast iron monument and updated ties.

January 27, 2016 - Found cast iron monument and updated ties.

April 25, 2019 - Found cast iron monument, verified position by VRS GPS methods and updated ties prior to removal for road construction.

July 15, 2019 - Set cast iron monument flush after road construction using static GPS methods. Updated ties.

October 21, 2020 - Found cast iron monument and updated ties.