

CERTIFICATE OF LOCATION OF GOVERNMENT CORNER

County of Anoka

State of Minnesota

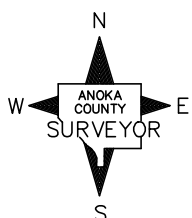
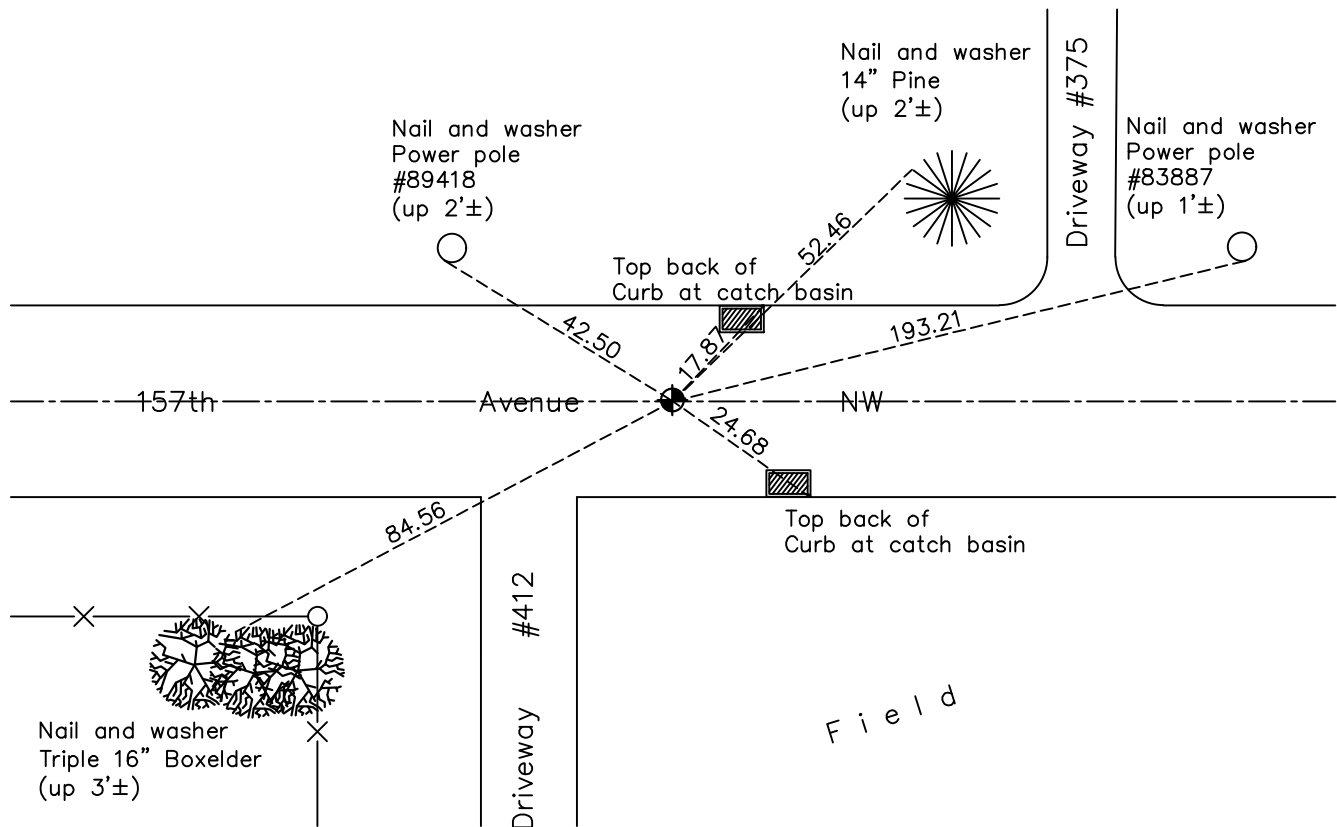
North 1/4 Corner of Sec. 24 Township 32 Range 24

On the 1st day of June, 1983, the described corner was evidenced by area resurvey

and to perpetuate the location of said corner, at the exact location thereof, a permanent marker was placed consisting of a cast iron monument

AND on the 16th day of October, 2020, said permanent marker was found down 0.1'± on center line and the ties were updated.

Updated reference ties are as shown below.



Revision Date
01/29/21

N.A.D. 1983 Coordinates
(1996 Adjustment)

County Project Coordinates	
Northing	180085.2165
Easting	497742.2382
Date	12/01/00

I hereby certify that this United States public land survey monument record is correct and complete to the best of my knowledge and belief.
David M Zieglermeier Date 7/28/21
 David M. Zieglermeier, Anoka County Surveyor
 Minnesota License Number 46179

HISTORY OF GOVERNMENT CORNER

Page No. 58

County of Anoka

State of Minnesota

North 1/4 Corner of Sec. 24 Township 32 Range 24

CORNER HISTORY:

July 1962 – Set cast iron monument down 0.5' using area resurvey and established ties to monument.

August 17, 1964 – Found cast iron monument and updated ties.

June 27, 1972 – Found cast iron monument and updated ties.

June 2, 1976 – Found cast iron monument and updated ties.

June 4, 1979 – Found cast iron monument and updated ties.

June 24, 1982 – Found cast iron monument and updated ties.

September 28, 1982 – Found cast iron monument and updated ties prior to road construction.

March 2, 1983 – Replaced cast iron monument after road construction using ties. Updated ties.

June 1, 1983 – Found cast iron monument and updated ties. Set P.K. nails 2.00' north and east of monument.

June 3, 1985 – Found cast iron monument and updated ties.

August 2, 1988 – Found cast iron monument and updated ties.

July 23, 1993 – Found cast iron monument and updated ties.

December 1, 2000 – Found cast iron monument and established NAD 1983 (1996 Adjustment) Anoka County Project Coordinates by Static GPS methods. Updated ties.

January 26, 2011 – Found cast iron monument to be under road surface (blacktop). Left updates to later date.

February 8, 2011 – Found cast iron monument broken and updated ties to center of monument.

February 22, 2011 – Found broken cast iron monument and verified position using VRS GPS methods.

February 23, 2011 – Found broken cast iron monument and verified position using static GPS methods.

March 1, 2011 – Replaced broken cast iron monument with a new cast iron monument. Verified position of monument using VRS GPS methods and updated ties. P.K. nails 2.00' north and east of monument.

January 27, 2016 – Found cast iron monument down 0.1'± on center line and updated ties.

October 16, 2020 – Found cast iron monument down 0.1'± on center line and updated ties.