

CERTIFICATE OF LOCATION OF GOVERNMENT CORNER

County of Anoka

State of Minnesota

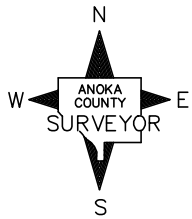
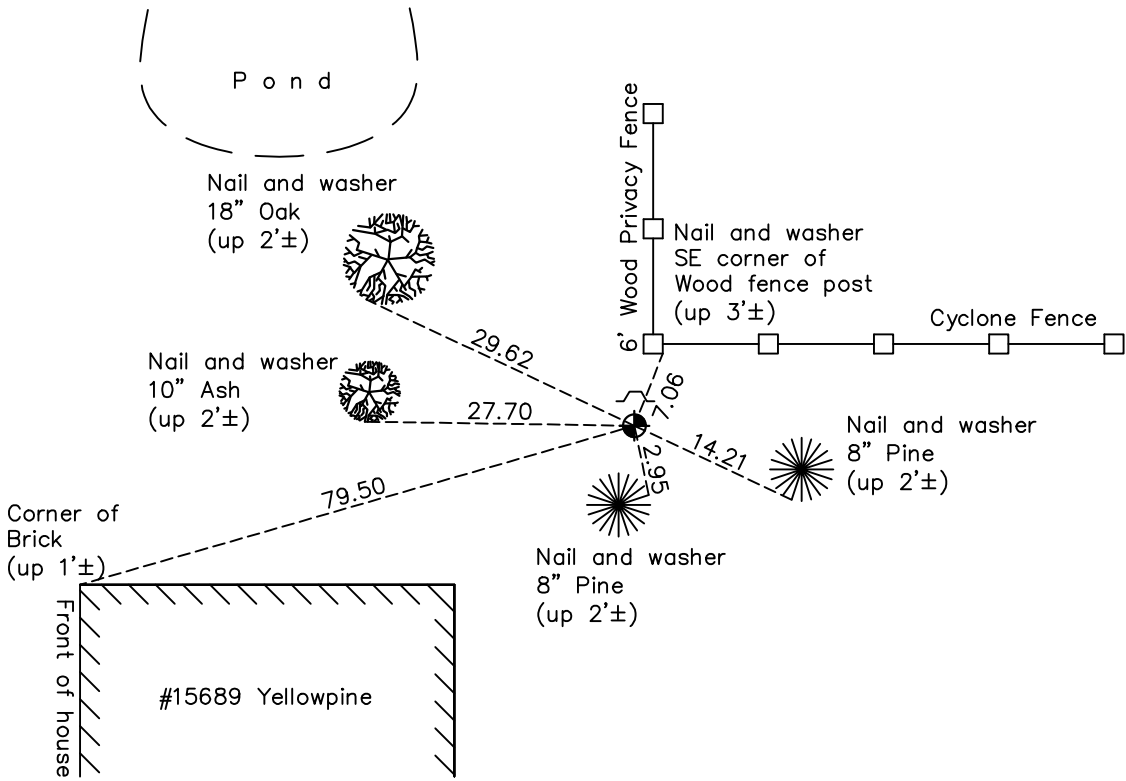
South 1/4 Corner of Sec. 14 Township 32 Range 24

On the 27th day of February, 1963, the described corner was evidenced by area resurvey

and to perpetuate the location of said corner, at the exact location thereof, a permanent marker was placed consisting of a cast iron monument with a sign and post on the north side

AND on the 8th day of October, 2020, said permanent marker was found down 1'± and the ties were updated

Updated reference ties are as shown below.



Revision Date
01/29/21

N.A.D. 1983 Coordinates
(1996 Adjustment)

County Project Coordinates	
Northing	180186.8112
Easting	492498.5911
Date	6/16/00

I hereby certify that this United States public land survey monument record is correct and complete to the best of my knowledge and belief.

David M Zieglsmeier Date 7/28/21

David M. Zieglsmeier, Anoka County Surveyor
Minnesota License Number 46179

HISTORY OF GOVERNMENT CORNER

County of Anoka

State of Minnesota

South 1/4 Corner of Sec. 14 Township 32 Range 24

CORNER HISTORY:

February 27, 1963 – Set bridge spike using area resurvey and established ties to monument.

August 19, 1964 – Found bridge spike and updated ties.

July 24, 1968 – Found bridge spike and updated ties.

June 30, 1972 – Found bridge spike and updated ties.

June 2, 1976 – Replaced bridge spike with a cast iron monument set up 0.2'±. Updated ties.

June 5, 1979 – Found cast iron monument and updated ties.

June 24, 1982 – Found cast iron monument and updated ties.

August 18, 1988 – Found cast iron monument and updated ties.

July 27, 1993 – Found cast iron monument and updated ties. Set sign and post on north side of monument.

June 12, 2000 – Found 1/2" iron pipe set by Pioneer Engineering in location of cast iron monument. Verified location of iron pipe using static GPS methods and resurveyed area to verify position. Updated ties.

June 16, 2000 – Replaced 1/2" iron pipe with a cast iron monument and sign and post on north side of monument. Updated ties.

February 7, 2011 – Found cast iron monument down 1.0'± and updated ties.

July 19, 2016 – Found cast iron monument down 1.0'± and updated ties.

October 8, 2020 – Found cast iron monument down 1.0'± and updated ties.