

# CERTIFICATE OF LOCATION OF GOVERNMENT CORNER

County of Anoka

State of Minnesota

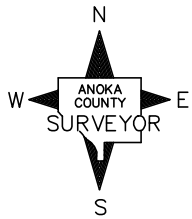
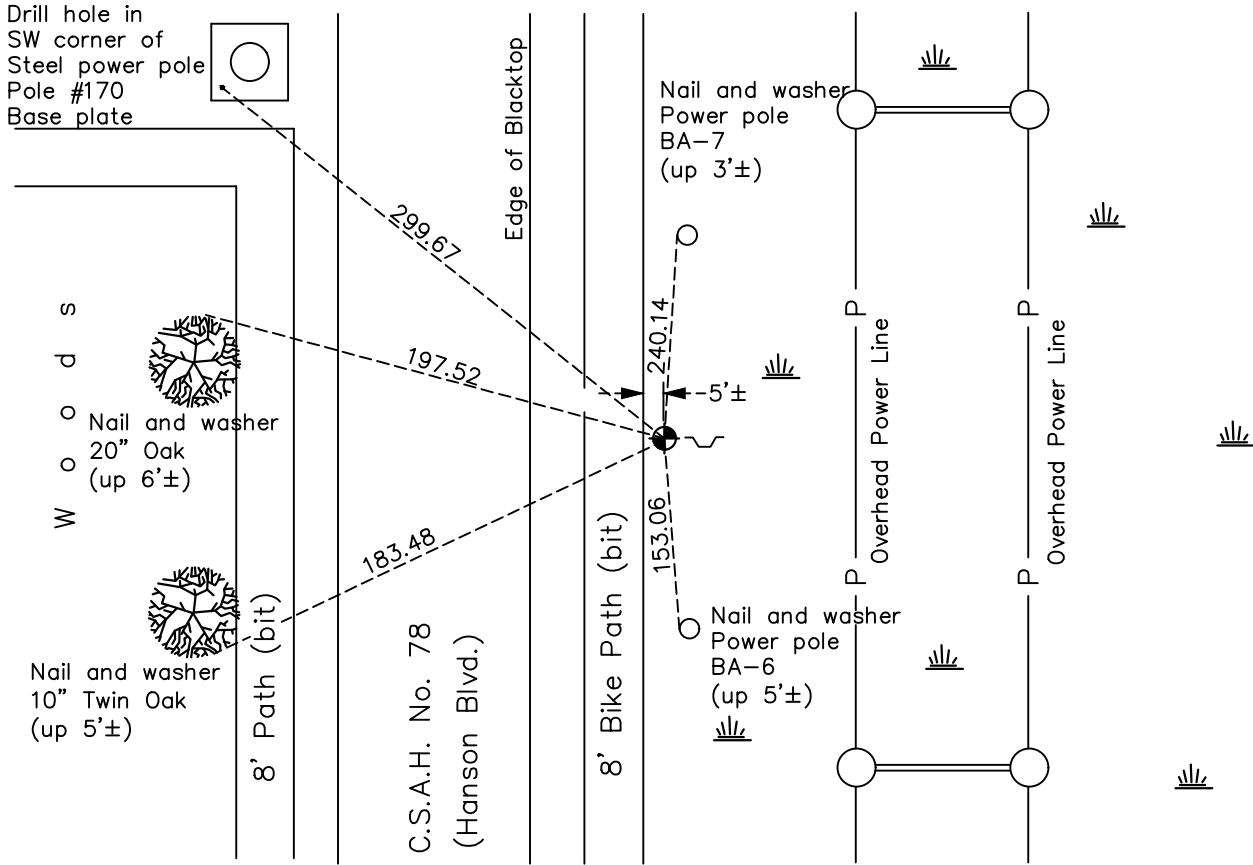
## Southwest Corner of Sec. 14 Township 32 Range 24

On the 27th day of February, 1963, the described corner was evidenced by area resurvey

and to perpetuate the location of said corner, at the exact location thereof, a permanent marker was placed consisting of a cast iron monument with a sign and post on the east side facing north

AND on the 20th day of October, 2020, said permanent marker was found down 0.8'± and the ties were updated

Updated reference ties are as shown below.



Revision Date  
 01/29/21

N.A.D. 1983 Coordinates  
 (1996 Adjustment)

County Project Coordinates	
Northing	180266.0548
Easting	489862.6897
Date	8/08/00

I hereby certify that this United States public land survey monument record is correct and complete to the best of my knowledge and belief.  
*David M Zieglsmeier* Date 7/28/21  
 David M. Zieglsmeier, Anoka County Surveyor  
 Minnesota License Number 46179

# HISTORY OF GOVERNMENT CORNER

Page No. 61

County of Anoka

State of Minnesota

## Southwest Corner of Sec. 14 Township 32 Range 24

### **CORNER HISTORY:**

February 27, 1963 – Set 1" X 9' iron pipe in swamp using area resurvey and established ties to monument. Iron pipe is up 4'± above the surface and is painted with alternate 6" red and white bands.

August 1964 – Found red and white iron pipe and updated ties.

July 24, 1968 – Found red and white iron pipe still standing but area was wet.

Summer 1972 – Area was too wet to access corner.

January 24, 1974 – Found red and white iron pipe but all ties had been removed due to power line construction.

January 19, 1978 – Found red and white iron pipe.

February 9, 1978 – Found 1" red and white iron pipe up 4'± and re-established ties to iron pipe.

April 23, 1981 – Set construction ties prior to road construction.

August 7, 1984 – Set cast iron monument flush with surface after road construction using construction ties. Set sign and post on east side of monument.

May 30, 1985 – Found cast iron monument and updated ties.

August 1, 1988 – Found cast iron monument and updated ties.

July 19, 1993 – Found cast iron monument and updated ties.

August 8, 2000 – Found cast iron monument and established NAD 1983 (1996 Adjustment) Anoka County Project Coordinates by Static GPS methods. Updated ties.

October 5, 2010 – Found cast iron monument down 0.8'± and updated ties.

January 22, 2016 – Found cast iron monument down 0.8'± and updated ties.

October 20, 2020 – Found cast iron monument down 0.8'± and updated ties.