

CERTIFICATE OF LOCATION OF GOVERNMENT CORNER

County of Anoka

State of Minnesota

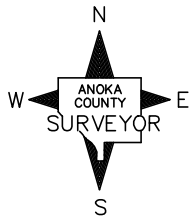
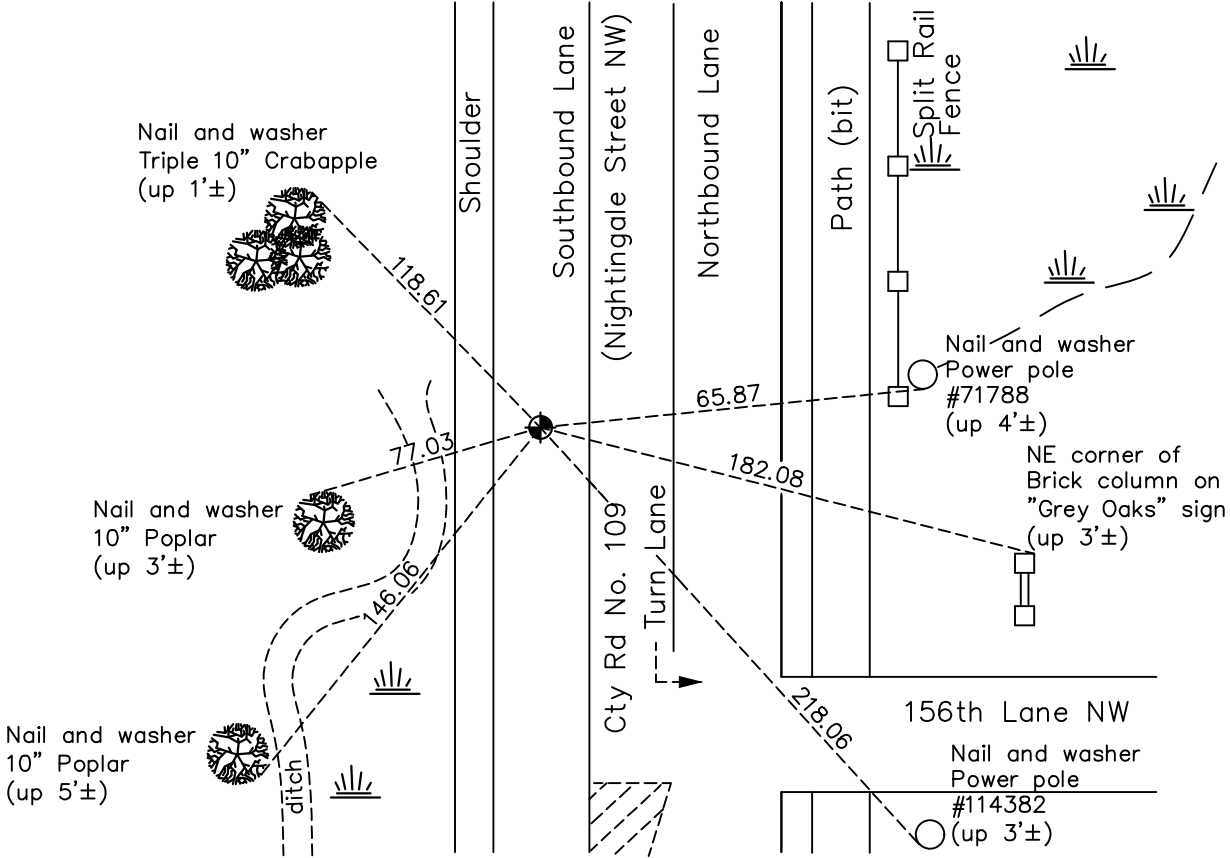
North 1/4 Corner of Sec. 22 Township 32 Range 24

On the 9th day of August, 1960, the described corner was evidenced by an iron pipe

and to perpetuate the location of said corner, at the exact location thereof, a permanent marker was placed consisting of a cast iron monument

AND on the 22nd day of October, 2020, said permanent marker was found flush with the surface and updated ties.

Updated reference ties are as shown below.



Revision Date

01/29/21

N.A.D. 1983 Coordinates
(1996 Adjustment)

County Project Coordinates	
Northing	180322.7694
Easting	487227.8667
Date	7/31/00

I hereby certify that this United States public land survey monument record is correct and complete to the best of my knowledge and belief.

David M Zieglsmeier Date 7/28/21

David M. Zieglsmeier, Anoka County Surveyor
Minnesota License Number 46179

HISTORY OF GOVERNMENT CORNER

County of Anoka

State of Minnesota

North 1/4 Corner of Sec. 22 Township 32 Range 24

CORNER HISTORY:

August 9, 1960 – Found iron pipe down 0.2' and mushroomed on top. Established ties to monument.

August 19, 1964 – Replaced iron pipe with a cast iron monument set down 0.4'±. Updated ties.

July 15, 1968 – Found cast iron monument and updated ties.

June 23, 1972 – Found cast iron monument and updated ties.

June 2, 1976 – Replaced 3/4" iron pipe, set prior to road construction, with a cast iron monument set down 0.1'± after road construction and updated ties.

June 5, 1979 – Found cast iron monument and updated ties.

June 25, 1982 – Found cast iron monument and updated ties.

June 6, 1985 – Found cast iron monument and updated ties.

August 11, 1988 – Found cast iron monument and updated ties.

August 8, 1989 – Found cast iron monument and updated ties.

July 21, 1993 – Found cast iron monument and updated ties.

July 31, 2000 – Found cast iron monument and established NAD 1983 (1996 Adjustment) Anoka County Project Coordinates by Static GPS methods. Updated ties.

December 6, 2010 – Found cast iron monument down 0.3'± and updated ties.

September 11, 2013 – Found cast iron monument missing due to construction. Reset position of corner with a cast iron monument using ties and verified position by Static GPS methods.

April 8, 2016 – Found cast iron monument flush with the surface and updated ties.

October 22, 2020 – Found cast iron monument flush with the surface and updated ties.