

CERTIFICATE OF LOCATION OF GOVERNMENT CORNER

County of Anoka

State of Minnesota

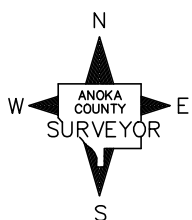
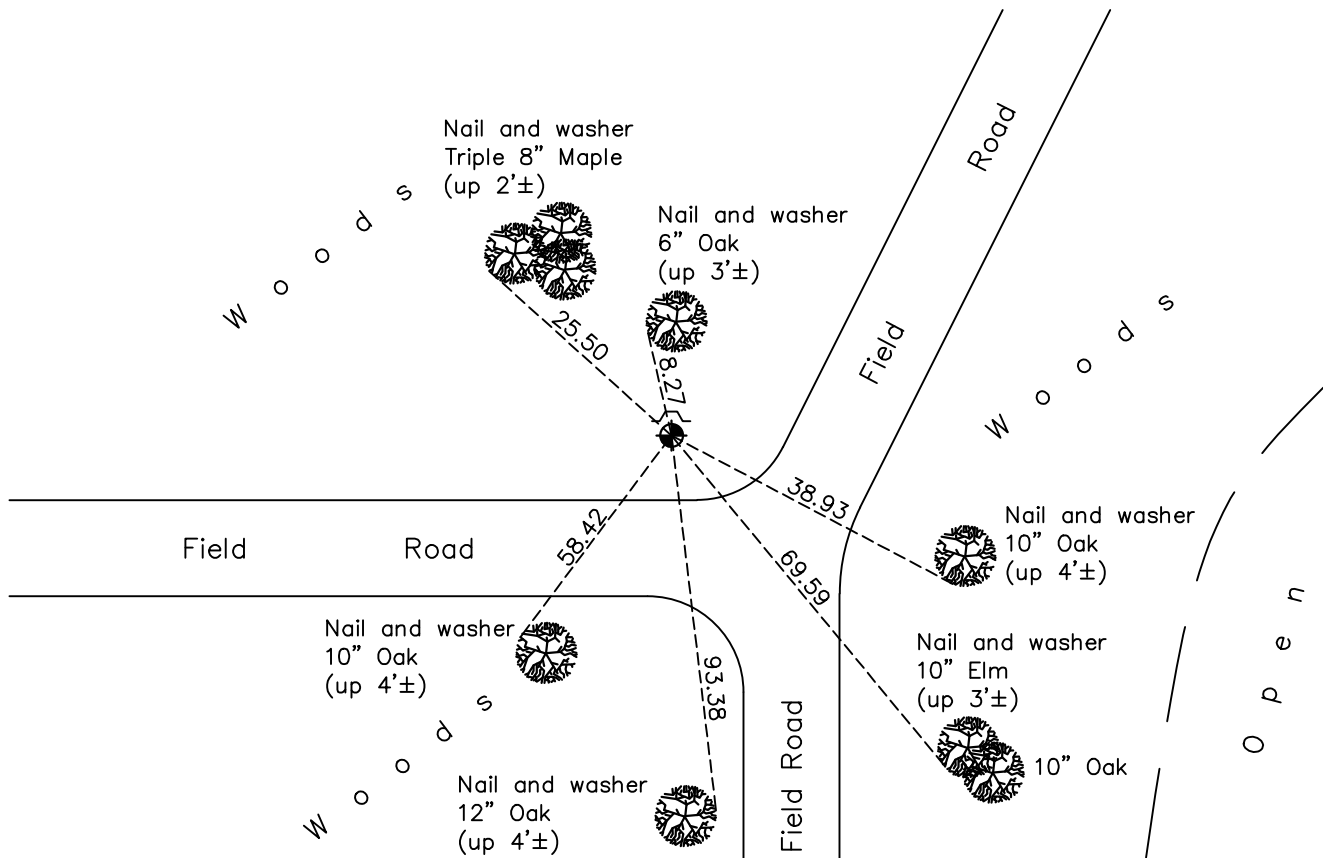
Southwest Corner of Sec. 15 Township 32 Range 24

On the 9th day of August, 1960, the described corner was evidenced by a 1/2" iron pipe

and to perpetuate the location of said corner, at the exact location thereof, a permanent marker was placed consisting of a cast iron monument with a sign and post on the north side

AND on the 16th day of November, 2020, said permanent marker was found down 0.3'± and the ties were updated

Updated reference ties are as shown below.



Revision Date
01/29/21

N.A.D. 1983 Coordinates
(1996 Adjustment)

| County Project Coordinates | |
|----------------------------|--------------------|
| Northing | <u>180395.2078</u> |
| Easting | <u>484664.2440</u> |
| Date | <u>2/14/01</u> |

I hereby certify that this United States public land survey monument record is correct and complete to the best of my knowledge and belief.

David M Zieglmeier Date 7/28/21

David M. Zieglmeier, Anoka County Surveyor
Minnesota License Number 46179

HISTORY OF GOVERNMENT CORNER

County of Anoka

State of Minnesota

Southwest Corner of Sec. 15 Township 32 Range 24

CORNER HISTORY:

April 20, 1943 – Cartwright found 6" X 6" granite monument down 1.0'± with iron pipe on north side of monument. Established ties to monument.

August 9, 1960 – Found iron pipe down 6" and updated ties.

August 19, 1964 – Found iron pipe and updated ties.

July 29, 1968 – Replaced iron pipe with a cast iron monument set up 0.1'±. Updated ties.

July 14, 1972 – Found cast iron monument and updated ties.

June 2, 1976 – Found cast iron monument and updated ties.

June 6, 1979 – Found cast iron monument and updated ties.

July 7, 1982 – Found cast iron monument and updated ties.

August 12, 1988 – Found cast iron monument with all ties gone. Re-established ties to monument. Tie sheet indicates a sign and post on the north side of monument.

August 4, 1993 – Found cast iron monument with sign and post on north side and updated ties.

February 14, 2001 – Found cast iron monument and established NAD 1983 (1996 Adjustment) Anoka County Project Coordinates by Static GPS methods. Updated ties.

December 6, 2010 – Found cast iron monument down 0.3'± with sign and post on north side and updated ties.

July 18, 2016 – Found cast iron monument down 0.3'± with sign and post on north side and updated ties.

November 16, 2020 – Found cast iron monument down 0.3'± with sign and post on north side and updated ties.