

# CERTIFICATE OF LOCATION OF GOVERNMENT CORNER

County of Anoka

State of Minnesota

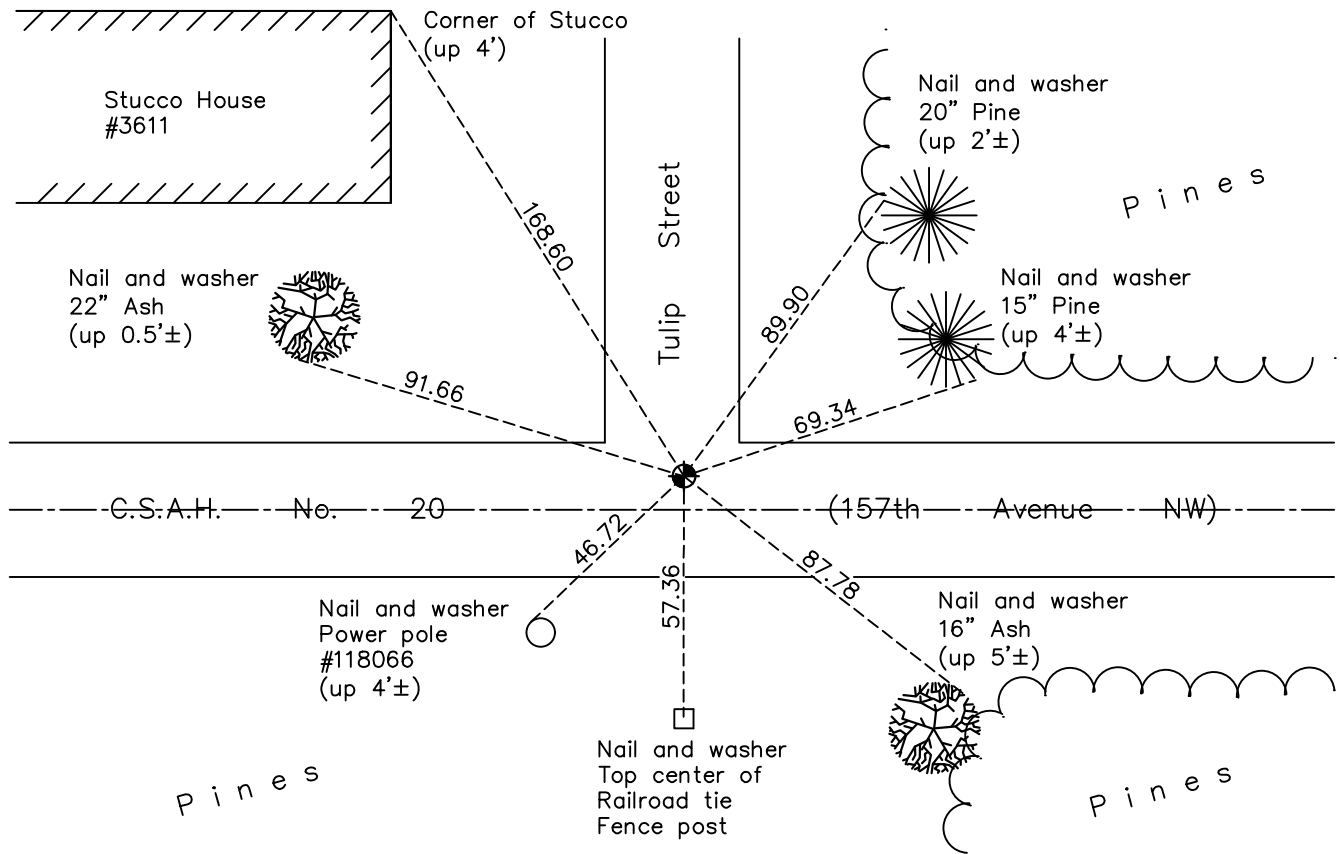
## North 1/4 Corner of Sec. 20 Township 32 Range 24

On the 1st day of July, 1963, the described corner was evidenced by area resurvey

and to perpetuate the location of said corner, at the exact location thereof, a permanent marker was placed consisting of a cast iron monument

AND on the 20th day of July, 2023, said permanent marker was reset position with 14" Cast Iron Monument. Verified position with ACS RTK GPS method and updated ties after setting

Updated reference ties are as shown below.



Revision Date  
 10/03/2023

N.A.D. 1983 Coordinates  
 (1996 Adjustment)

County Project Coordinates	
Northing	180345.4278
Easting	476757.0316
Date	10/09/00

I hereby certify that this United States public land survey monument record is correct and complete to the best of my knowledge and belief.

*David Zieglmeier* Date 12/7/23

David M. Zieglmeier, Anoka County Surveyor  
 Minnesota License Number 46179

# HISTORY OF GOVERNMENT CORNER

Page No. 65

County of Anoka

State of Minnesota

## North 1/4 Corner of Sec. 20 Township 32 Range 24

### **CORNER HISTORY:**

May 1855 - This corner was established by James M. Marsh, Deputy Surveyor. Marsh marked the position by "set quarter section post " with one bearing tree as an accessory, no other trees nearby.

July 1, 1963 - Set cast iron monument using area resurvey and established ties to monument.

8/25/64, 7/10/68 - Found cast iron monument and updated ties.

June 28, 1972 - Found cast iron monument and updated ties. Set P.K. nails 2.00' north and east of monument.

6/2/76, 7/27/78 - Found cast iron monument and updated ties.

September 26, 1978 - Added spacer/s and replaced top of cast iron monument. Monument is flush with surface. Updated ties.

6/5/79, 6/25/82, 7/27/88, 7/15/93, 7/17/97 - Found cast iron monument. Updated ties.

October 9, 2000 - Found cast iron monument and established NAD 1983 (1996 Adjustment) Anoka County Project Coordinates by Static GPS methods. Updated ties.

12/7/10, 7/15/16, 10/22/20 - Found cast iron monument flush. Updated ties.

April 12, 2023 - Found cast iron monument flush, verified position by RTK GPS method and updated ties. Removed Cast iron monument for road construction.

July 20, 2023 - Reset position w/ 14" removable CIM after portion of roadway with position was not reconstructed. Verified position with ACS RTK GPS method and updated ties after setting. Job #23-121