

# CERTIFICATE OF LOCATION OF GOVERNMENT CORNER

County of Anoka

State of Minnesota

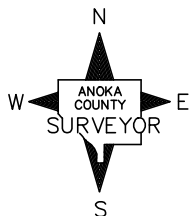
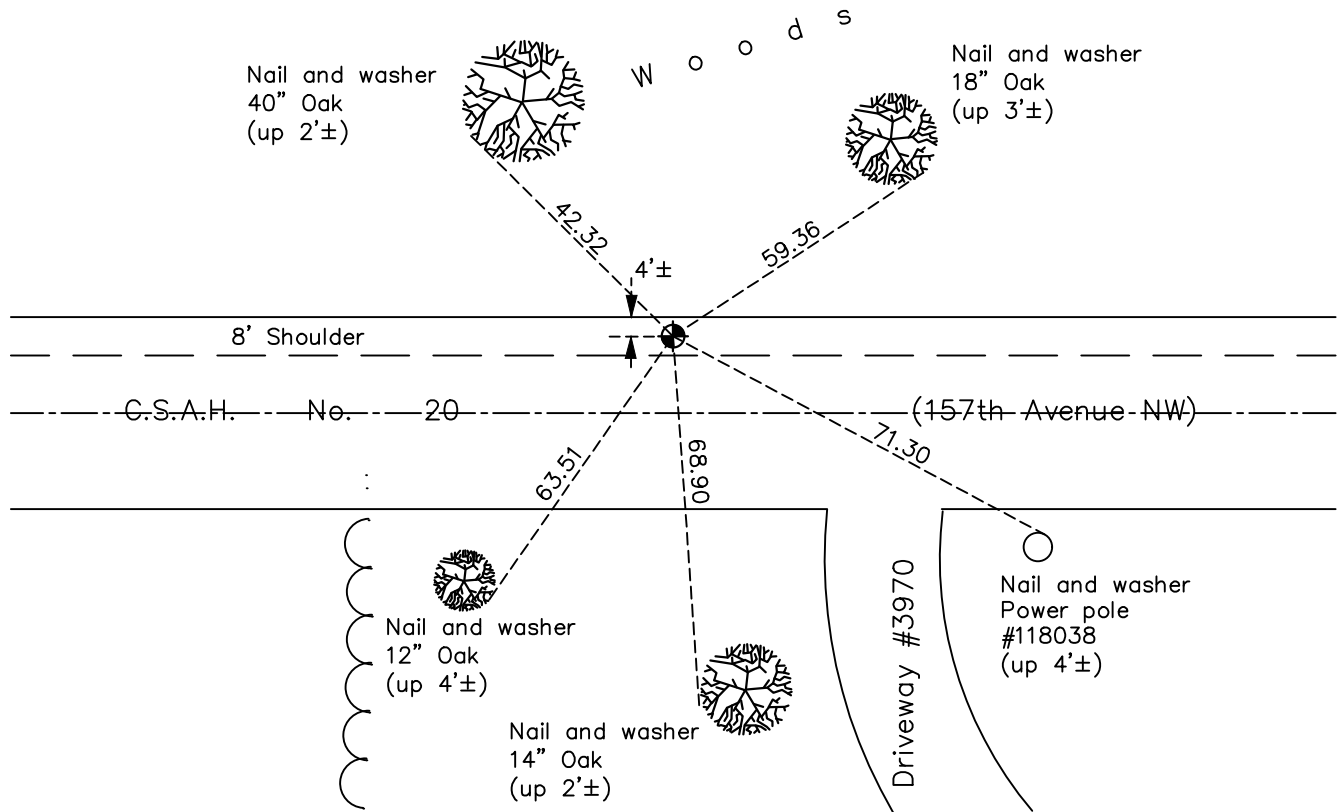
## Northeast Corner of Sec. 19 Township 32 Range 24

On the 2nd day of July, 1963, the described corner was evidenced by area resurvey

and to perpetuate the location of said corner, at the exact location thereof, a permanent marker was placed consisting of a cast iron monument

AND on the 22nd day of October, 2021, said permanent marker was found 4'± south of  
blacktop edge in 8' shoulder and the ties were updated

Updated reference ties are as shown below.



Revision Date  
02/09/2021

N.A.D. 1983 Coordinates  
(1996 Adjustment)

County Project Coordinates	
Northing	180388.2386
Easting	474128.8029
Date	10/04/00

I hereby certify that this United States public land survey monument record is correct and complete to the best of my knowledge and belief.  
*David M Zieglsmeier* Date 7/29/21  
 David M. Zieglsmeier, Anoka County Surveyor  
 Minnesota License Number 46179

# HISTORY OF GOVERNMENT CORNER

County of Anoka

State of Minnesota

## Northeast Corner of Sec. 19 Township 32 Range 24

### **CORNER HISTORY:**

July 2, 1963 – Set cast iron monument down  $0.5' \pm$  using area resurvey and established ties to monument.

August 26, 1964 – Found cast iron monument and updated ties.

July 10, 1968 – Found cast iron monument and updated ties.

June 28, 1972 – Found cast iron monument and updated ties.

June 2, 1976 – Found cast iron monument and updated ties.

July 27, 1978 – Replaced solid cast iron monument with an extendable cast iron monument prior to overlay of shoulder. Updated ties.

June 5, 1979 – Found cast iron monument and updated ties.

June 25, 1982 – Found cast iron monument and updated ties.

July 27, 1988 – Found cast iron monument and updated ties.

July 15, 1993 – Found cast iron monument and updated ties.

September 15, 1997 – Set cast iron monument after road construction and updated ties.

October 4, 2000 – Found cast iron monument and established NAD 1983 (1996 Adjustment) Anoka County Project Coordinates by Static GPS methods. Updated ties.

December 6, 2010 – Found cast iron monument and updated ties.

July 15 , 2016– Found cast iron monument and updated ties.

October 22, 2020– Found cast iron monument and updated ties.