

CERTIFICATE OF LOCATION OF GOVERNMENT CORNER

County of Anoka

State of Minnesota

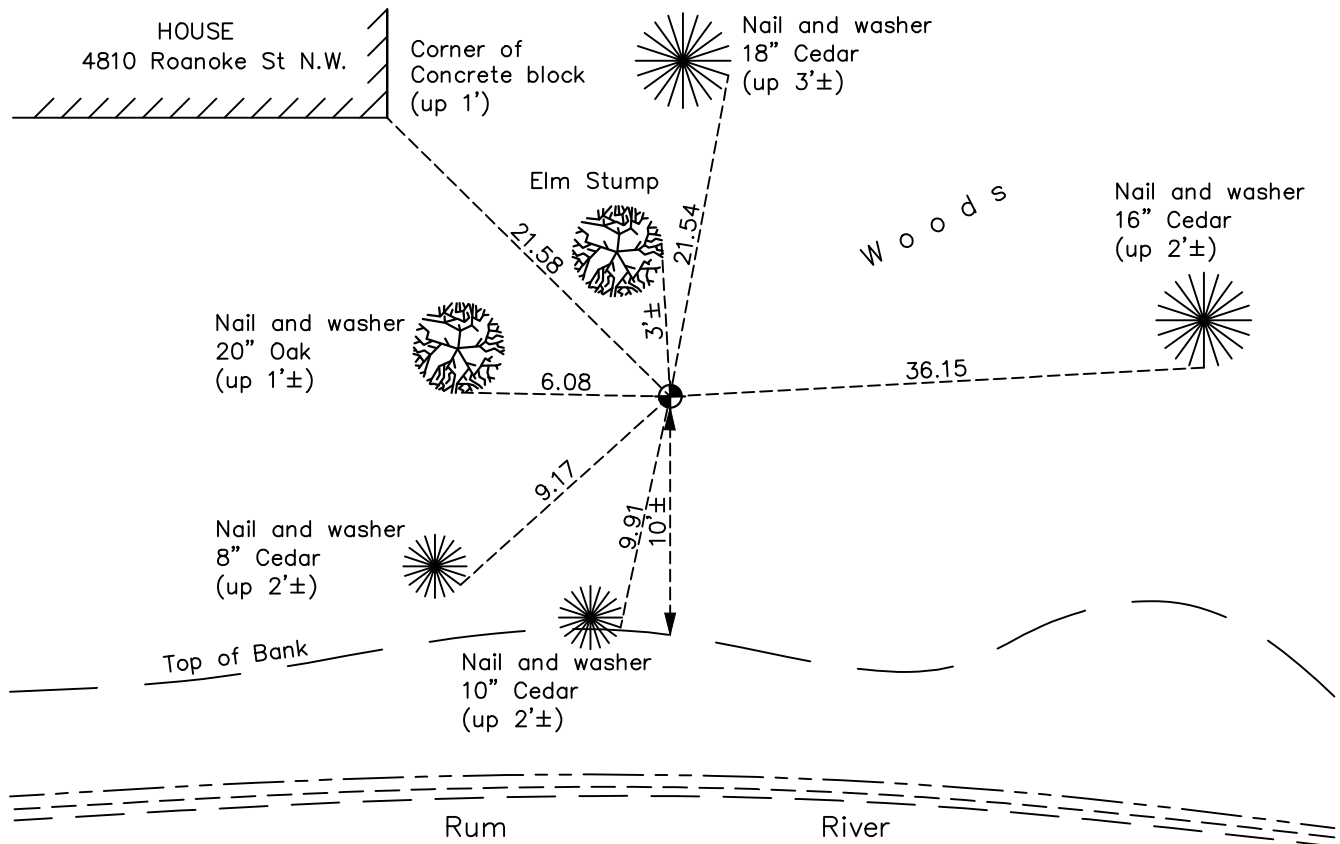
Witness Corner of Sec. 18 Township 32 Range 24

On the 20th day of September, 1963, the described corner was evidenced by a 3/4" iron pipe

and to perpetuate the location of said corner, at the exact location thereof, a permanent marker was placed consisting of a cast iron monument

AND on the 13th day of February, 2023, said permanent marker was found down 0.5'±, position coordinates verified correct by County RTK GPS method and the ties were updated

Updated reference ties are as shown below.



Revision Date

02/16/2023

N.A.D. 1983 Coordinates
(1996 Adjustment)

County Project Coordinates	
Northing	<u>180635.4228</u>
Easting	<u>468606.3500</u>
Date	<u>1/05/00</u>

I hereby certify that this United States public land survey monument record is correct and complete to the best of my knowledge and belief.

David Zieglmeier Date 3/1/23

David M. Zieglmeier, Anoka County Surveyor
Minnesota License Number 46179

HISTORY OF GOVERNMENT CORNER

County of Anoka

State of Minnesota

Witness Corner of Sec. 18 Township 32 Range 24

CORNER HISTORY:

September 20, 1963 – Replaced found 3/4” iron pipe with a cast iron monument. Established ties to monument.

August 26, 1964 – Found cast iron monument and updated ties.

July 10, 1968 – Found cast iron monument and updated ties.

July 10, 1972 – Found cast iron monument and updated ties.

June 2, 1976 – Found cast iron monument and updated ties.

June 5, 1979 – Found cast iron monument and updated ties.

June 21, 1982 – Found cast iron monument and updated ties.

June 14, 1985 – Found cast iron monument and updated ties.

August 8, 1988 – Found cast iron monument and updated ties.

July 28, 1993 – Found cast iron monument and updated ties.

January 5, 2000 – Found cast iron monument and established NAD 1983 (1996 Adjustment) Anoka County Project Coordinates by Static GPS methods. Updated ties.

January 3, 2011 – Found cast iron monument down 0.5'± and updated ties.

July 1, 2016 – Found cast iron monument down 0.5'± and updated ties

October 23, 2020 – Found cast iron monument down 0.5'± and updated ties

February 13, 2023 – Found cast iron monument down 0.5'±, position coordinates were verified correct by County RTK GPS method and the ties were updated.