

CERTIFICATE OF LOCATION OF GOVERNMENT CORNER

County of Anoka

State of Minnesota

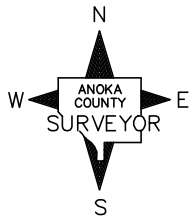
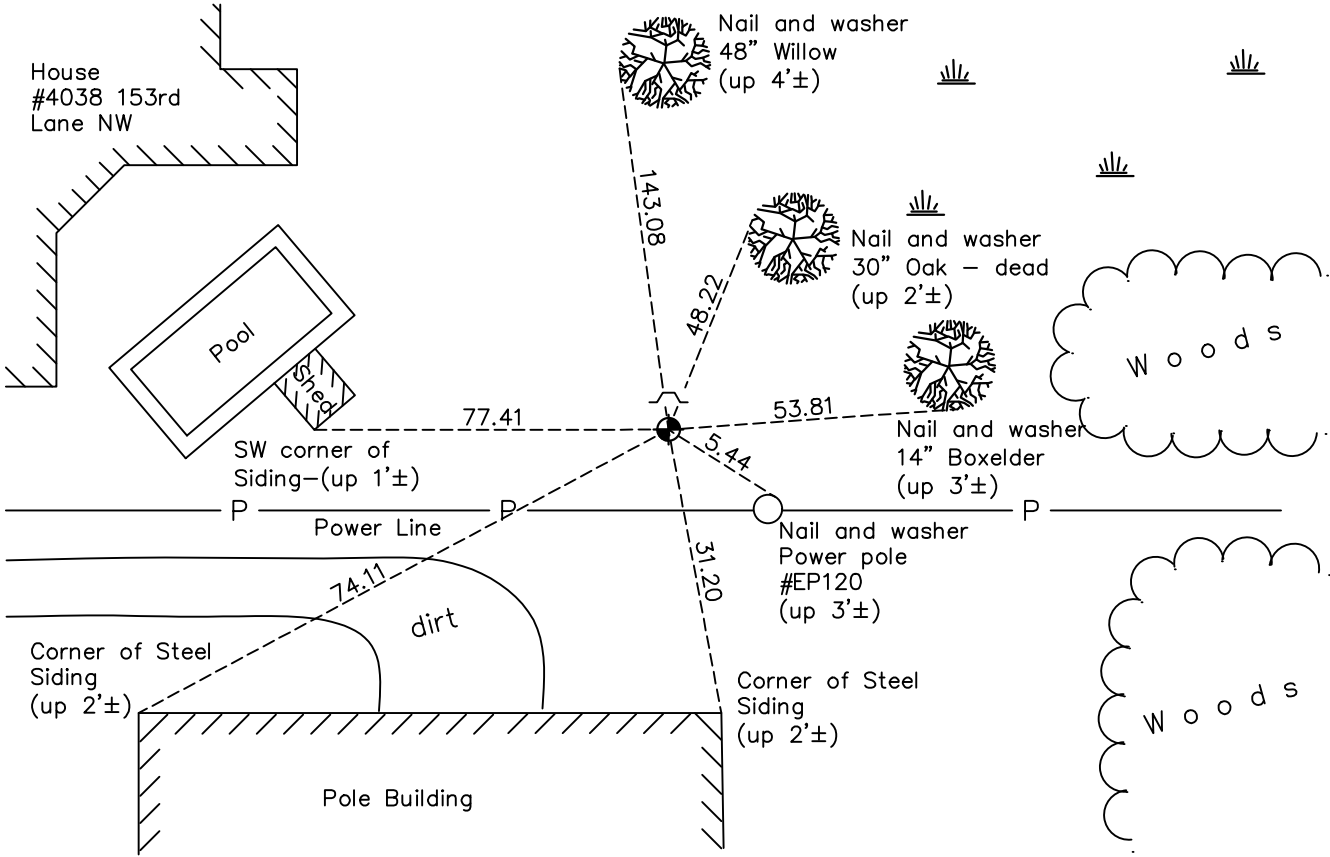
East 1/4 Corner of Sec. 19 Township 32 Range 24

On the 28th day of June, 1963, the described corner was evidenced by area resurvey

and to perpetuate the location of said corner, at the exact location thereof, a permanent marker was placed consisting of a cast iron monument with a sign and post on the north side

AND on the 4th day of November, 2020, said permanent marker was found down 0.5'± and the ties were updated

Updated reference ties are as shown below.



N.A.D. 1983 Coordinates
(1996 Adjustment)

County Project Coordinates	
Northing	177765.2166
Easting	474092.4334
Date	1/23/01

Revision Date
02/09/2021

I hereby certify that this United States public land survey monument record is correct and complete to the best of my knowledge and belief.

David M Zieglsmeier Date 7/29/21

David M. Zieglsmeier, Anoka County Surveyor
Minnesota License Number 46179

HISTORY OF GOVERNMENT CORNER

Page No. 71

County of Anoka

State of Minnesota

East 1/4 Corner of Sec. 19 Township 32 Range 24

CORNER HISTORY:

June 28, 1963 – Set 3/4” iron pipe up 1'± in root of 26” Oak tree using area resurvey and established ties to monument.

August 25, 1964 – Found 3/4” iron pipe and updated ties.

July 22, 1968 – Found 3/4” iron pipe and updated ties.

June 3, 1976 – Found 3/4” iron pipe and updated ties.

June 6, 1979 – Found 3/4” iron pipe and updated ties.

June 21, 1982 – Found 3/4” iron pipe and updated ties.

June 7, 1985 – Found 3/4” iron pipe and updated ties.

August 8, 1988 – Found cast iron monument with a sign and post on the north side(date set unknown) and updated ties.

January 23, 2001 – Found cast iron monument and established NAD 1983 (1996 Adjustment) Anoka County Project Coordinates by Static GPS methods. Updated ties.

January 3, 2011 – Found cast iron monument down 0.5' and updated ties.

July 19, 2016 – Found cast iron monument down 0.5' and updated ties.

November 04, 2020 – Found cast iron monument down 0.5' and updated ties.