

CERTIFICATE OF LOCATION OF GOVERNMENT CORNER

County of Anoka

State of Minnesota

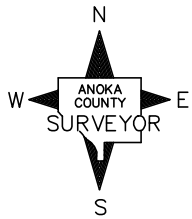
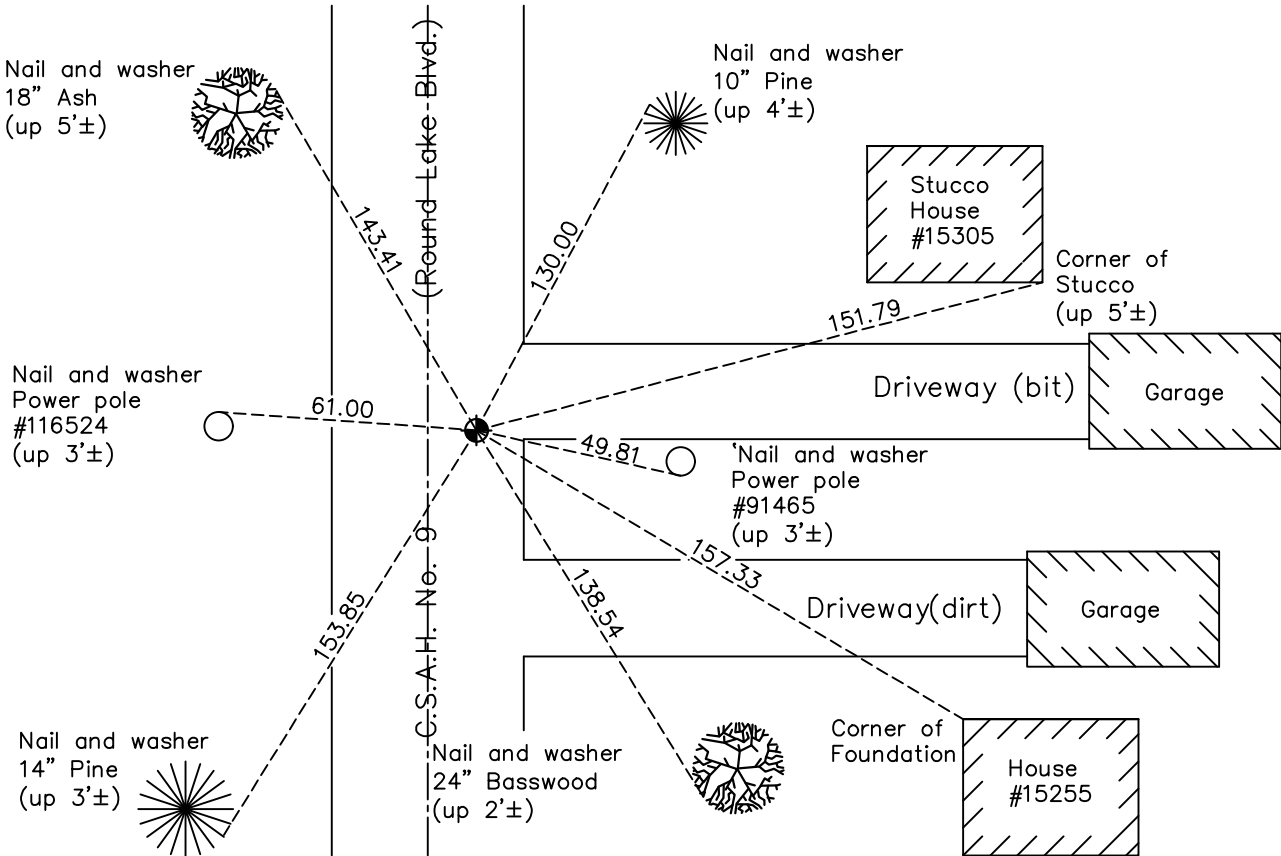
West 1/4 Corner of Sec. 21 Township 32 Range 24

On the 31st day of August, 1959, the described corner was evidenced by a concrete monument on top of an oval stone (removed in 1980)

and to perpetuate the location of said corner, at the exact location thereof, a permanent marker was placed consisting of a cast iron monument on top of the concrete monument

AND on the 13th day of October, 2020, said permanent marker was found flush with the surface and the ties were updated

Updated reference ties are as shown below.



Revision Date
 02/10/2021

N.A.D. 1983 Coordinates
 (1996 Adjustment)

County Project Coordinates	
Northing	177701.5032
Easting	479358.8706
Date	10/09/00

I hereby certify that this United States public land survey monument record is correct and complete to the best of my knowledge and belief.

David M. Zieglermeier Date 7/30/21

David M. Zieglermeier, Anoka County Surveyor
 Minnesota License Number 46179

HISTORY OF GOVERNMENT CORNER

Page No. 72

County of Anoka

State of Minnesota

West 1/4 Corner of Sec. 21 Township 32 Range 24

CORNER HISTORY:

August 31, 1959 – Found concrete monument with iron pipe in center. Established ties to monument.

September 1961 – Found concrete monument and updated ties.

August 22, 1964 – Found concrete monument and updated ties.

July 22, 1968 – Found concrete monument down 0.2'± and updated ties. Set P.K. nails 2.00' north and east of monument.

July 5, 1972 – Found concrete monument and updated ties.

June 3, 1976 – Found concrete monument and updated ties.

August 11, 1980 – Found oval shaped stone with an "X" on top down 5'± under concrete monument (date set unknown). The concrete monument was set on top of stone in 1941 by H.A. Cartwright. On August 11, 1980 the stone was removed and the concrete monument was reset with a cast iron monument set on top of concrete monument and flush with the road surface. Updated ties.

October 1, 1980 – Set cast iron monument on top of concrete monument and flush with surface after road construction. Updated ties.

July 1, 1982 – Found cast iron monument and updated ties.

Date unknown – Found cast iron monument and updated ties.

July 19, 1992 – Found cast iron monument and updated ties.

April 16, 1999 – Found cast iron monument and updated ties.

October 9, 2000 – Found cast iron monument and established NAD 1983 (1996 Adjustment) Anoka County Project Coordinates by Static GPS methods. Updated ties.

July 3, 2001 – Set construction ties and removed cast iron monument prior to road construction.

December 10, 2010 – Found cast iron monument flush with the surface and updated ties.

July 18, 2016 – Found cast iron monument flush with the surface and updated ties.

October 13, 2020 – Found cast iron monument flush with the surface and updated ties.