

CERTIFICATE OF LOCATION OF GOVERNMENT CORNER

County of Anoka

State of Minnesota

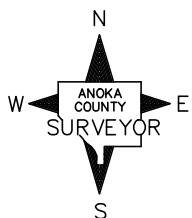
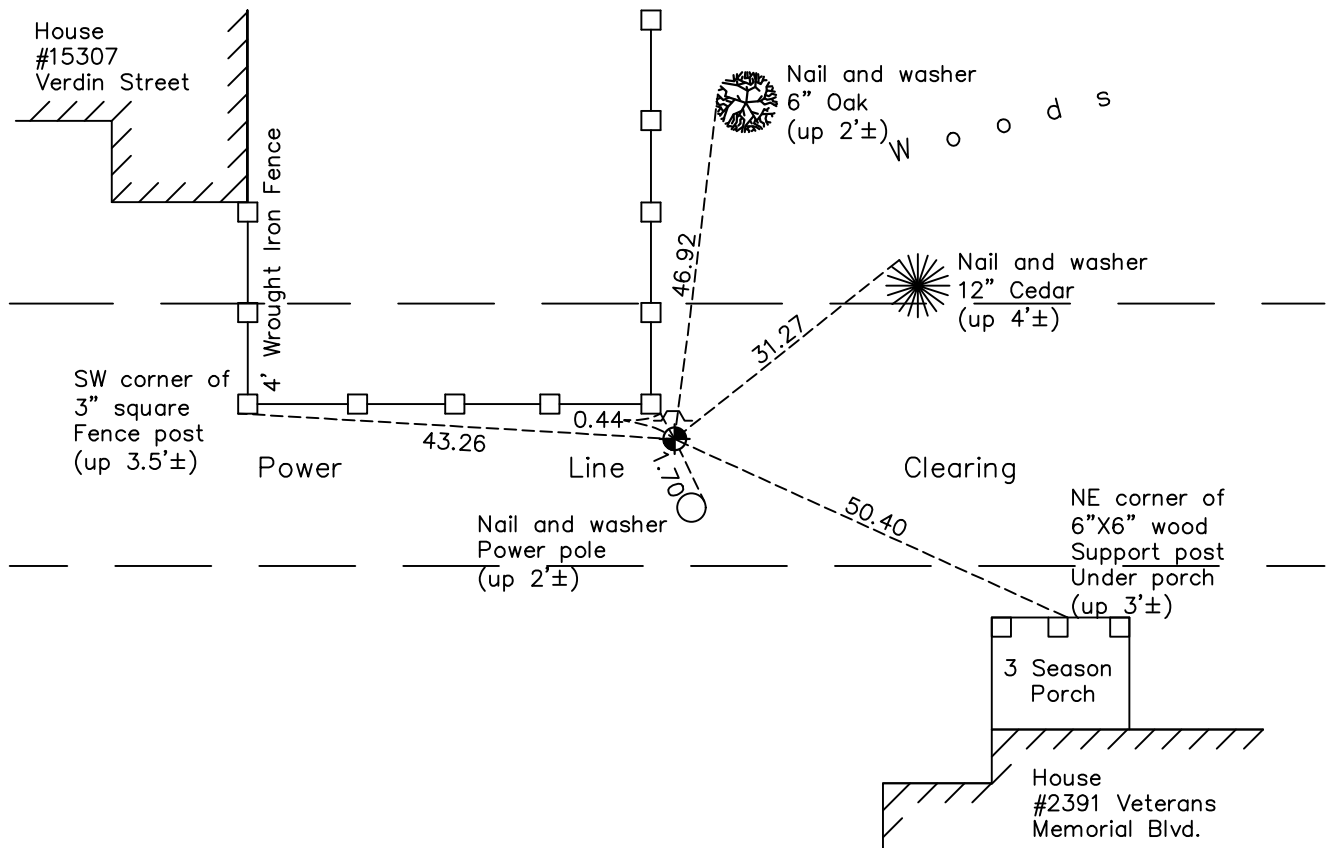
West 1/4 Corner of Sec. 22 Township 32 Range 24

On the 5th day of August, 1968, the described corner was evidenced by a 3" x 5" fieldstone and 3/4" iron pipe

and to perpetuate the location of said corner, at the exact location thereof, a permanent marker was placed consisting of a cast iron monument

AND on the 18th day of November, 2020, said permanent marker was found flush with the surface and the ties were updated. Found sign and post on the north side of monument.

Updated reference ties are as shown below.



Revision Date
 02/10/2021

N.A.D. 1983 Coordinates
 (1996 Adjustment)

County Project Coordinates	
Northing	177751.1978
Easting	484652.5229
Date	2/06/01

I hereby certify that this United States public land survey monument record is correct and complete to the best of my knowledge and belief.
David M Zieglsmeier Date 7/30/21
 David M. Zieglsmeier, Anoka County Surveyor
 Minnesota License Number 46179

HISTORY OF GOVERNMENT CORNER

Page No. 73

County of Anoka

State of Minnesota

West 1/4 Corner of Sec. 22 Township 32 Range 24

CORNER HISTORY:

August 9, 1960 – Found stone monument with iron pipe 0.20' south of center of stone. Established ties to monument. The stone is a 3" X 5" field stone.

August 19, 1964 – Found stone monument with iron pipe and updated ties.

July 24, 1968 – Could not find stone monument. Found 1" iron pipe with pin in end.

August 5, 1968 – Replaced 3" X 5" stone monument (previously unable to find) and 3/4" iron pipe with a cast iron monument set up 0.1'±. Verified position of monument using ties. Updated ties.

June 3, 1976 – Found cast iron monument and updated ties.

June 6, 1979 – Found cast iron monument and updated ties.

June 28, 1982 – Found cast iron monument and updated ties.

August 12, 1988 – Found cast iron monument and updated ties.

July 21, 1993 – Found cast iron monument and updated ties.

February 6, 2001 – Found cast iron monument and established NAD 1983 (1996 Adjustment) Anoka County Project Coordinates by Static GPS methods. Updated ties.

October 5, 2010 – Found cast iron monument flush with the surface and updated ties. Set sign and post on north side of monument.

February 9, 2016 – Found cast iron monument flush with the surface and updated ties. Found sign and post on north side of monument.

November 18, 2020 – Found cast iron monument flush with the surface and updated ties. Found sign and post on north side of monument.