

# CERTIFICATE OF LOCATION OF GOVERNMENT CORNER

County of Anoka

State of Minnesota

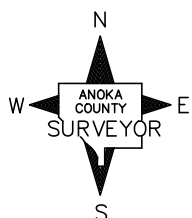
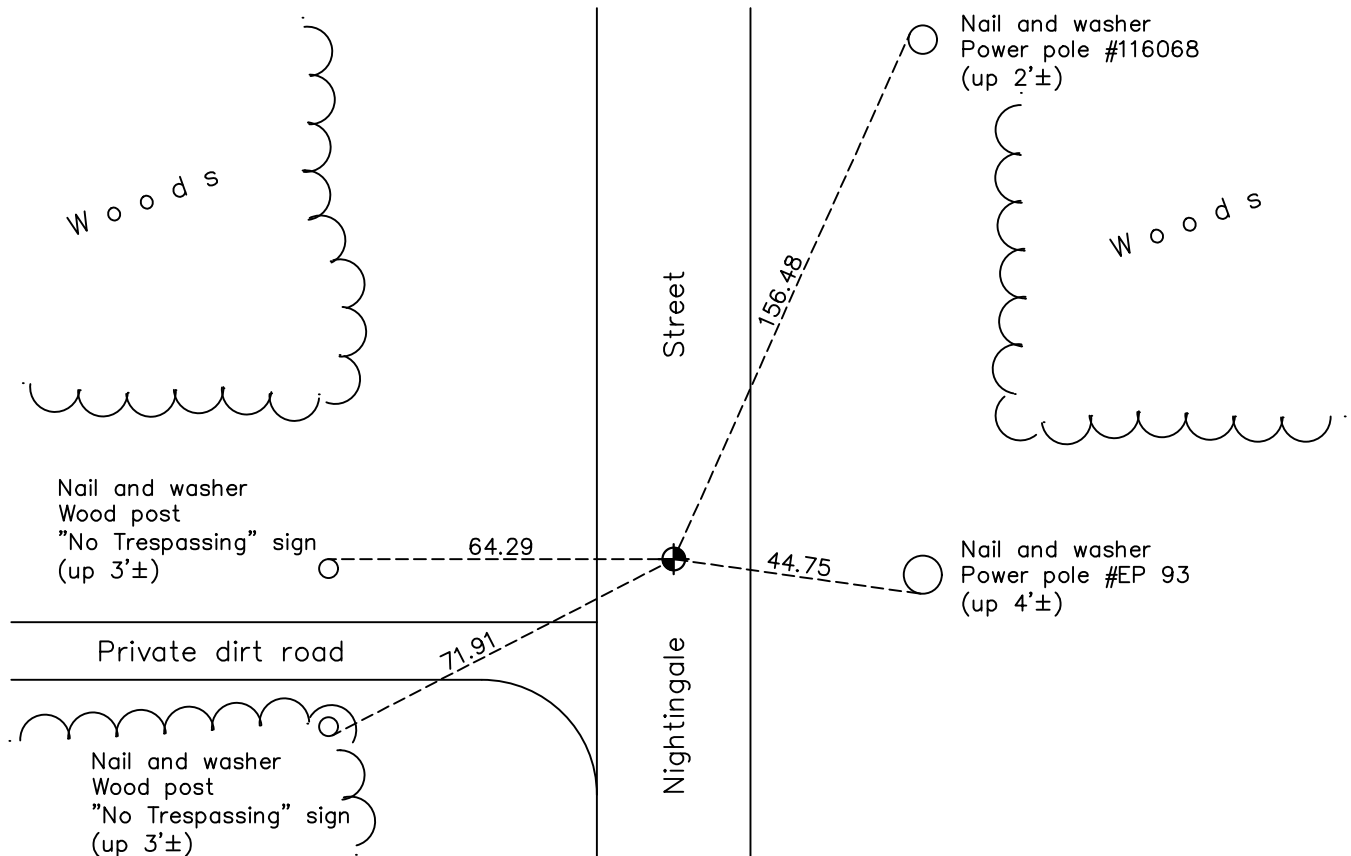
Center Corner of Sec. 22 Township 32 Range 24

On the 9th day of August, 1960, the described corner was evidenced by a pinched iron pipe

and to perpetuate the location of said corner, at the exact location thereof, a permanent marker was placed consisting of a cast iron monument

AND on the 23rd day of June, 2022, said permanent marker was found broken off and replaced with new cast iron monument flush. Verified position by VRS GPS methods. Updated ties.

Updated reference ties are as shown below.



Revision Date  
 7/6/2022

N.A.D. 1983 Coordinates  
 (2011 Adjustment)

County Project Coordinates	
Northing	177695.2351
Easting	487223.5252
Date	12/17/2020

I hereby certify that this United States public land survey monument record is correct and complete to the best of my knowledge and belief.

*David Zieglmeier* Date 1/18/23

David M. Zieglmeier, Anoka County Surveyor  
 Minnesota License Number 46179

# HISTORY OF GOVERNMENT CORNER

Page No. 74

County of Anoka

State of Minnesota

Center Corner of Sec. 22 Township 32 Range 24

## **CORNER HISTORY:**

August 9, 1960 - Found pinched iron pipe down 0.3'± and updated ties.

August 19, 1964 - Found iron pipe and updated ties.

July 15, 1968 - Found iron pipe and updated ties.

August 27, 1968 - Found iron pipe and updated ties.

June 23, 1972 - Found iron pipe and updated ties.

June 4, 1976 - Set cast iron monument using construction ties after road construction. Updated ties.

June 6, 1979 - Found cast iron monument and updated ties.

June 25, 1982 - Found cast iron monument and updated ties.

June 6, 1985 - Found cast iron monument and updated ties.

July 29, 1988 - Found cast iron monument and updated ties.

December 17, 2020 - Found cast iron monument broken off and down 0.8'±. Corner ties from 1988 all gone. Established NAD 1983 (2011 adj.) Anoka County project coordinates by static GPS methods.

June 23, 2022 - Found cast iron monument broken off and replaced with a new cast iron monument flush. Verified position by VRS GPS methods. Updated ties.