

CERTIFICATE OF LOCATION OF GOVERNMENT CORNER

County of Anoka

State of Minnesota

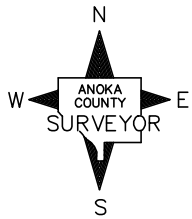
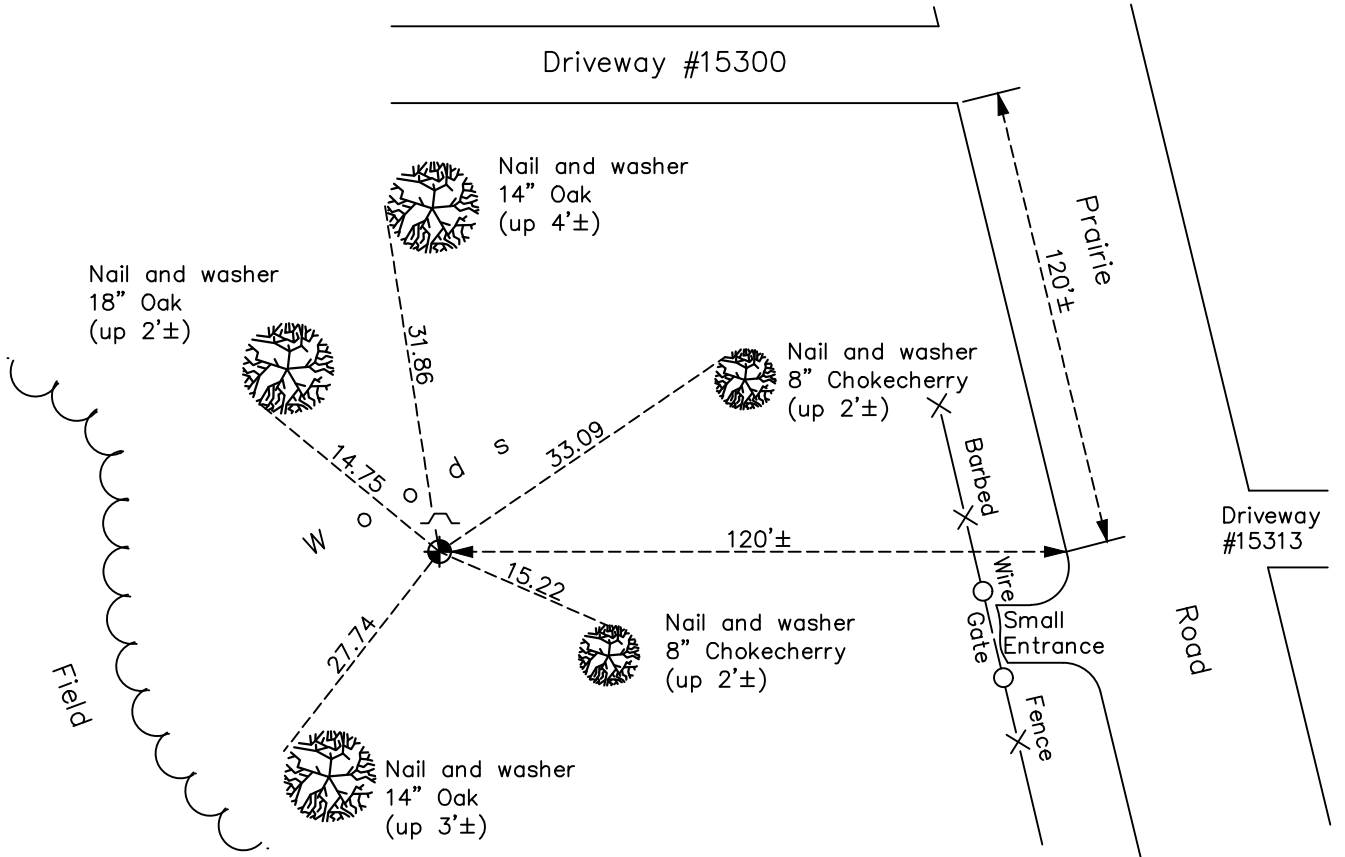
West 1/4 Corner of Sec. 24 Township 32 Range 24

On the 28th day of June, 1962, the described corner was evidenced by area resurvey

and to perpetuate the location of said corner, at the exact location thereof, a permanent marker was placed consisting of a cast iron monument with a sign and post on the north side

AND on the 18th day of November, 2020, said permanent marker was found up 0.1'± and the ties were updated

Updated reference ties are as shown below.



Revision Date

02/10/2021

N.A.D. 1983 Coordinates
(1996 Adjustment)

County Project Coordinates	
Northing	177497.4796
Easting	495132.8706
Date	2/01/01

I hereby certify that this United States public land survey monument record is correct and complete to the best of my knowledge and belief.

David M Zieglermeier Date 7/30/21

David M. Zieglermeier, Anoka County Surveyor
Minnesota License Number 46179

HISTORY OF GOVERNMENT CORNER

County of Anoka

State of Minnesota

West 1/4 Corner of Sec. 24 Township 32 Range 24

CORNER HISTORY:

June 28, 1962 – Set cast iron monument up 0.2'± using area resurvey and established ties to monument.

August 19, 1964 – Found cast iron monument and updated ties.

July 15, 1968 – Found cast iron monument and updated ties.

June 27, 1972 – Found cast iron monument and updated ties.

June 4, 1976 – Found cast iron monument and updated ties.

July 31, 1979 – Found cast iron monument and updated ties. Set sign and post on north side of monument.

June 28, 1982 – Found cast iron monument and updated ties.

June 4, 1985 – Found cast iron monument and updated ties.

August 2, 1988 – Found cast iron monument and updated ties.

July 22, 1993 – Found cast iron monument and updated ties.

February 1, 2001 – Found cast iron monument and established NAD 1983 (1996 Adjustment) Anoka County Project Coordinates by Static GPS methods. Updated ties.

October 25, 2010 – Found cast iron monument up 0.1'± and updated ties.

January 27, 2016 – Found cast iron monument up 0.1'± and updated ties.

November 18, 2020 – Found cast iron monument up 0.1'± and updated ties.