

CERTIFICATE OF LOCATION OF GOVERNMENT CORNER

County of Anoka

State of Minnesota

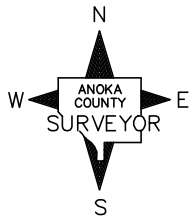
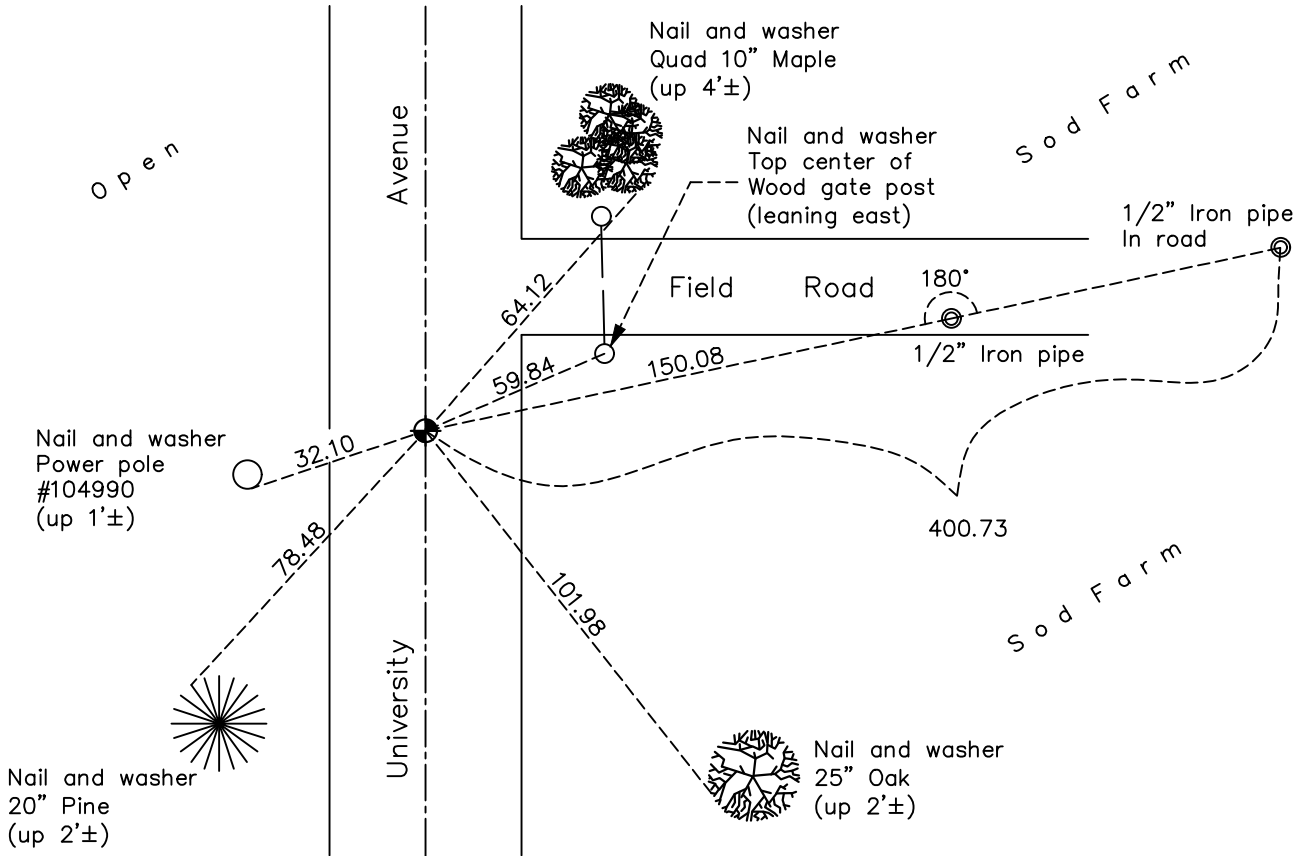
East 1/4 Corner of Sec. 24 Township 32 Range 24

On the 17th day of July, 1962, the described corner was evidenced by area resurvey

and to perpetuate the location of said corner, at the exact location thereof, a permanent marker was placed consisting of a cast iron monument

AND on the 9th day of June, 2020, said permanent marker was reset summer of 2019 with a CIM, set flush to service, after road construction. Ties updated 9th of June, 2020.

Updated reference ties are as shown below.



Revision Date
02/10/2021

N.A.D. 1983 Coordinates
 (1996 Adjustment)

County Project Coordinates	
Northing	<u>177430.8100</u>
Easting	<u>500332.4507</u>
Date	<u>10/23/00</u>

I hereby certify that this United States public land survey monument record is correct and complete to the best of my knowledge and belief.
David M Zieglsmeier Date 7/30/21
David M. Zieglsmeier, Anoka County Surveyor
 Minnesota License Number 46179

HISTORY OF GOVERNMENT CORNER

Page No. 77

County of Anoka

State of Minnesota

East 1/4 Corner of Sec. 24 Township 32 Range 24

CORNER HISTORY:

July 17, 1962 – Set cast iron monument down 0.5' using area resurvey and established ties to monument.

August 17, 1964 – Found cast iron monument and updated ties.

July 15, 1968 – Found cast iron monument and updated ties.

June 27, 1972 – Found cast iron monument and updated ties.

June 4, 1976 – Found cast iron monument and updated ties.

June 7, 1979 – Found cast iron monument and updated ties.

July 2, 1982 – Found cast iron monument and updated ties.

June 4, 1985 – Found cast iron monument and updated ties.

August 2, 1988 – Found cast iron monument and updated ties.

July 20, 1993 – Found cast iron monument and updated ties.

October 26, 1993 – Set construction ties and removed cast iron monument prior to road construction.

June 29, 1994 – Set cast iron monument after road construction using construction ties. Updated ties.

October 23, 2000 – Found cast iron monument and established NAD 1983 (1996 Adjustment) Anoka County Project Coordinates by Static GPS methods. Updated ties.

February 8, 2011 – Found cast iron monument and updated ties.

July 28, 2016 – Found cast iron monument and updated ties.

Summer, 2019 – Cast Iron Monument replaced after Road Construction using static GPS methods, set flush to surface.

June 9, 2020 – Found cast iron monument set flush to surface and updated ties