

CERTIFICATE OF LOCATION OF GOVERNMENT CORNER

County of Anoka

State of Minnesota

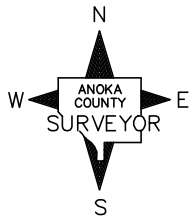
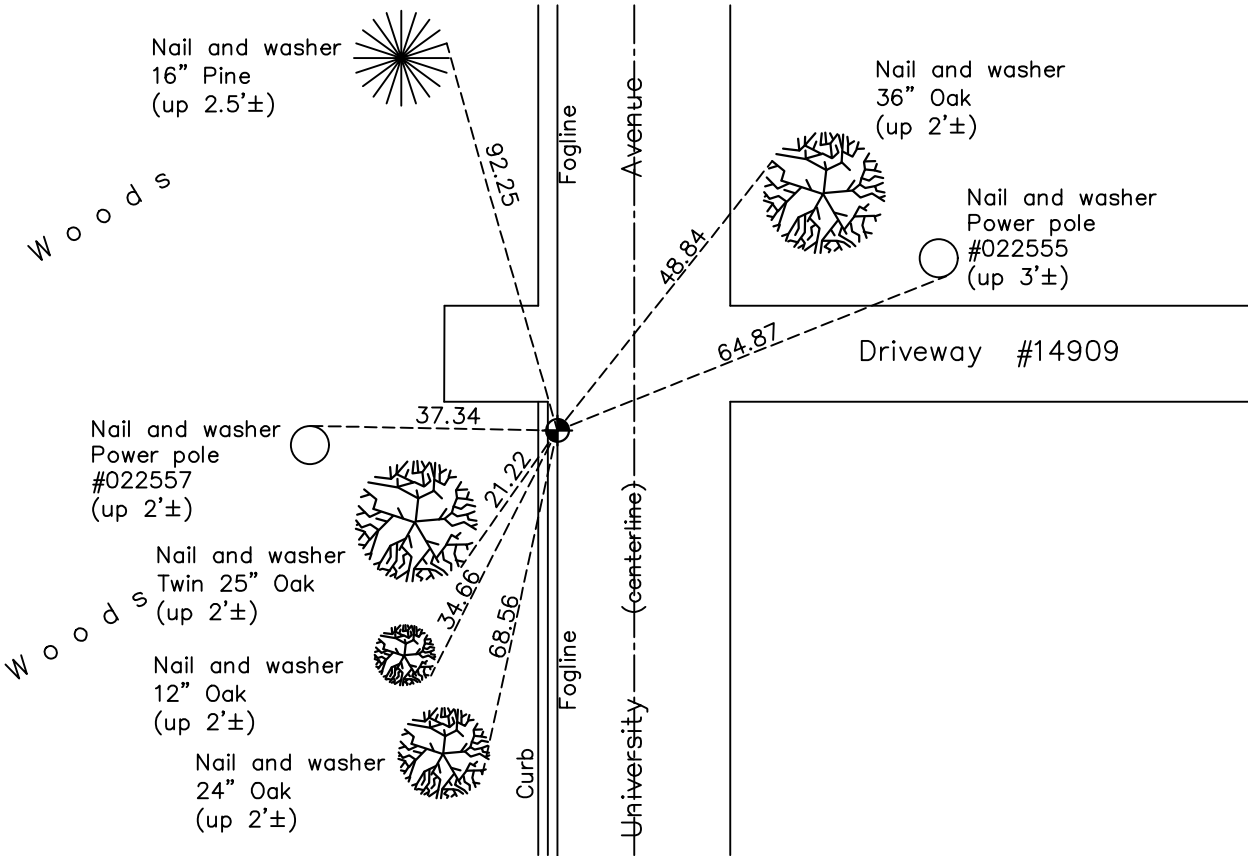
Southeast Corner of Sec. 24 Township 32 Range 24

On the 17th day of July, 1962, the described corner was evidenced by area resurvey

and to perpetuate the location of said corner, at the exact location thereof, a permanent marker was placed consisting of a cast iron monument

AND on the 9th day of June, 2020, said permanent marker was reset summer of 2019 with a CIM, set flush to surface, on fog line, after road construction. Ties updated 9th of June, 2020.

Updated reference ties are as shown below.



Revision Date

02/10/2021

N.A.D. 1983 Coordinates
(1996 Adjustment)

County Project Coordinates	
Northing	<u>174802.0013</u>
Easting	<u>500310.8210</u>
Date	<u>10/24/00</u>

I hereby certify that this United States public land survey monument record is correct and complete to the best of my knowledge and belief.

David M Zieglsmeier Date 7/30/21

David M. Zieglsmeier, Anoka County Surveyor
Minnesota License Number 46179

HISTORY OF GOVERNMENT CORNER

Page No. 78

County of Anoka

State of Minnesota

Southeast Corner of Sec. 24 Township 32 Range 24

CORNER HISTORY:

July 17, 1962 – Set cast iron monument up 0.1'± using area resurvey and established ties to monument.

July 15, 1968 – Found cast iron monument flush with the surface and updated ties.

June 27, 1972 – Found cast iron monument broken. Reset position of corner with a new cast iron monument set down 0.5'± using ties .

June 4, 1976 – Found cast iron monument and updated ties.

June 7, 1979 – Found cast iron monument and updated ties.

June 30, 1982 – Found cast iron monument and updated ties.

June 4, 1985 – Found cast iron monument and updated ties.

August 4, 1988 – Found cast iron monument and updated ties.

July 19, 1993 – Found cast iron monument and updated ties.

November 2, 1993 – Added spacer/s and replaced top of cast iron monument. Updated ties.

October 24, 2000 – Found cast iron monument and established NAD 1983 (1996 Adjustment) Anoka County Project Coordinates by Static GPS methods. Updated ties.

February 8, 2011 – Found cast iron monument and updated ties.

July 27, 2016 – Found cast iron monument and updated ties.

Summer 2019 – Cast Iron Monument replaced after Road Construction using static GPS methods, set flush to surface.

June 9, 2020 – Found cast iron monument flush to surface and updated ties.