

CERTIFICATE OF LOCATION OF GOVERNMENT CORNER

County of Anoka

State of Minnesota

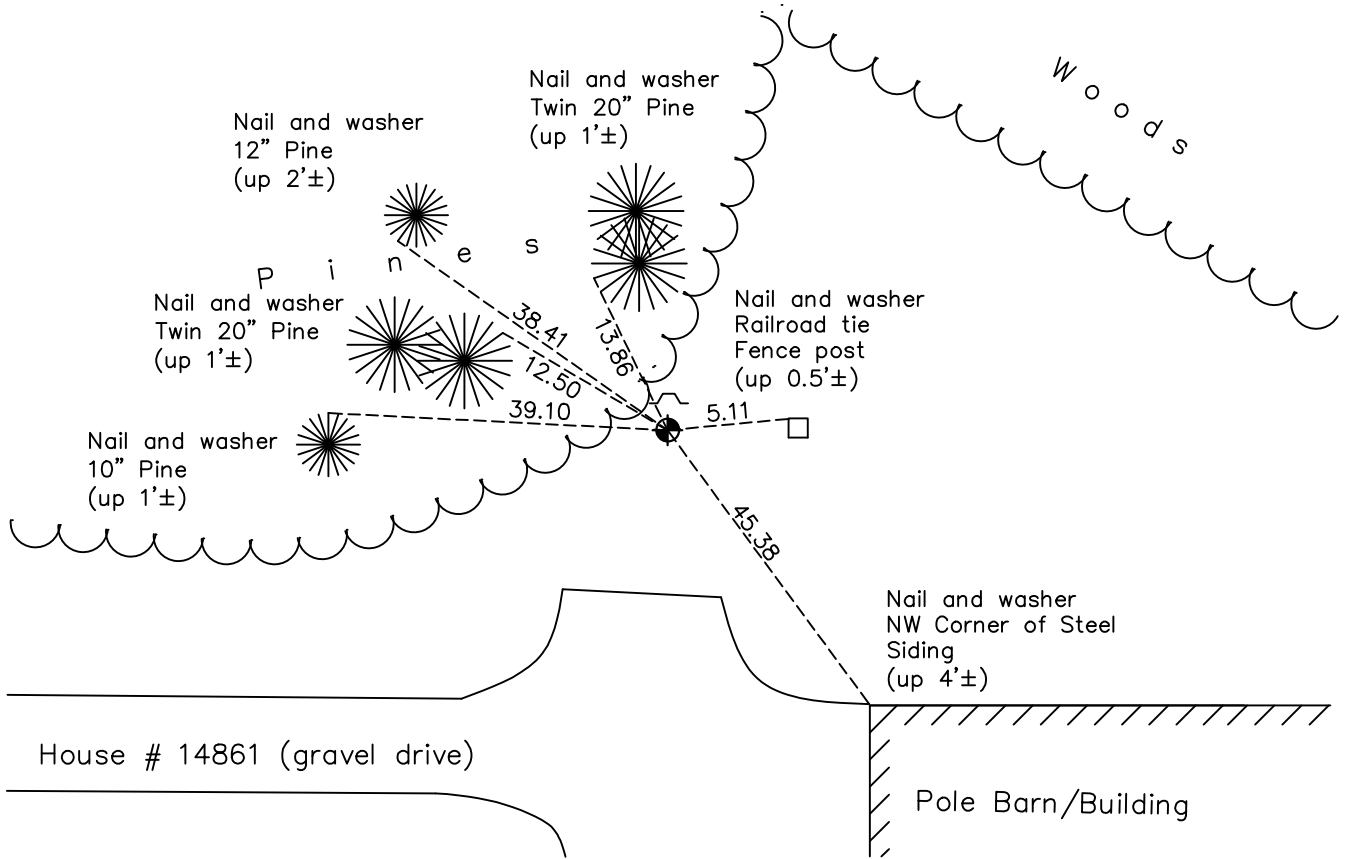
South 1/4 Corner of Sec. 24 Township 32 Range 24

On the 31st day of July, 1962, the described corner was evidenced by area resurvey

and to perpetuate the location of said corner, at the exact location thereof, a permanent marker was placed consisting of a cast iron monument

AND on the 21st day of October, 2020, said permanent marker was found down 0.2'± and the ties were updated. Found a sign and post 1' north of monument.

Updated reference ties are as shown below.



Revision Date
 02/10/2021

N.A.D. 1983 Coordinates
 (1996 Adjustment)

County Project Coordinates	
Northing	174844.1071
Easting	497720.0313
Date	10/24/00

I hereby certify that this United States public land survey monument record is correct and complete to the best of my knowledge and belief.
David M Zieglsmeier Date 7/30/21
 David M. Zieglsmeier, Anoka County Surveyor
 Minnesota License Number 46179

HISTORY OF GOVERNMENT CORNER

County of Anoka

State of Minnesota

South 1/4 Corner of Sec. 24 Township 32 Range 24

CORNER HISTORY:

July 31, 1962 – Set cast iron monument up 0.2' using area resurvey and established ties to monument.

August 20, 1964 – Found cast iron monument and updated ties.

July 29, 1968 – Found cast iron monument and updated ties.

July 6, 1972 – Found cast iron monument and updated ties.

June 8, 1976 – Found cast iron monument and updated ties.

June 11, 1979 – Found cast iron monument and updated ties.

July 6, 1982 – Found cast iron monument and updated ties.

June 10, 1985 – Found cast iron monument and updated ties.

August 4, 1988 – Found cast iron monument and updated ties.

July 26, 1993 – Found cast iron monument and updated ties.

January 31, 2011 – Found cast iron monument and updated ties.

February 16, 2011 – Set sign and post 1' north of cast iron monument.

January 31, 2011 – Found cast iron monument and updated ties.

April 8, 2016 – Found cast iron monument down 0.2'± with sign and post 1' north and updated ties.

October 21, 2020 – Found cast iron monument down 0.2'± with sign and post 1' north and updated ties.