

CERTIFICATE OF LOCATION OF GOVERNMENT CORNER

County of Anoka

State of Minnesota

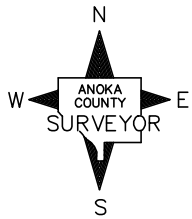
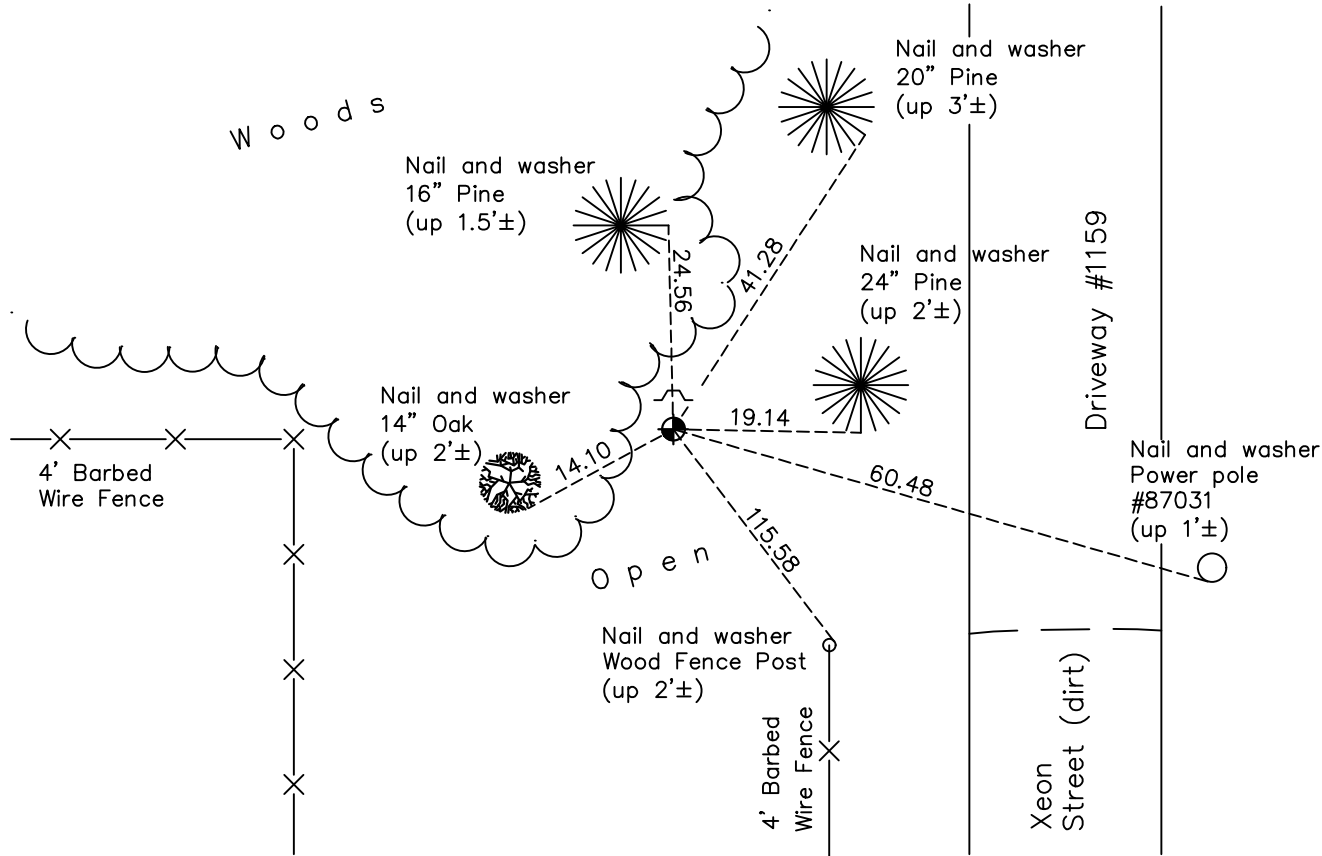
North 1/4 Corner of Sec. 26 Township 32 Range 24

On the 15th day of November, 1961, the described corner was evidenced by a 2" iron pipe

and to perpetuate the location of said corner, at the exact location thereof, a permanent marker was placed consisting of a cast iron monument with a sign and post on the north side

AND on the 21st day of October, 2020, said permanent marker was found flush with the surface and the ties were updated

Updated reference ties are as shown below.



Revision Date

02/10/2021

N.A.D. 1983 Coordinates
(1996 Adjustment)

County Project Coordinates	
Northing	174947.2770
Easting	492480.4971
Date	1/03/01

I hereby certify that this United States public land survey monument record is correct and complete to the best of my knowledge and belief.

David M Zieglsmeier Date 7/30/21

David M. Zieglsmeier, Anoka County Surveyor
Minnesota License Number 46179

HISTORY OF GOVERNMENT CORNER

County of Anoka

State of Minnesota

North 1/4 Corner of Sec. 26 Township 32 Range 24

CORNER HISTORY:

November 15, 1961 – Found 2” iron pipe set by N.C. Hoium. Established ties to monument.

August 17, 1964 – Found 2” iron pipe and updated ties.

July 15, 1968 – Replaced 2” iron pipe with a cast iron monument set flush with the surface. Updated ties.

July 6, 1972 – Found cast iron monument and updated ties.

June 7, 1976 – Found cast iron monument and updated ties.

June 8, 1979 – Found cast iron monument and updated ties.

June 28, 1982 – Found cast iron monument and updated ties.

June 4, 1985 – Found cast iron monument and updated ties.

August 4, 1988 – Found cast iron monument and updated ties.

July 22, 1993 – Found cast iron monument with sign and post on north side (date set unknown)and updated ties.

January 3, 2001 – Found cast iron monument and established NAD 1983 (1996 Adjustment) Anoka County Project Coordinates by Static GPS methods. Updated ties.

December 9, 2010 – Found cast iron monument flush with the surface with sign and post on north side. Updated ties.

February 8, 2016 – Found cast iron monument flush with the surface with sign and post on north side. Updated ties.

October 21, 2020 – Found cast iron monument flush with the surface with sign and post on north side. Updated ties.