

# CERTIFICATE OF LOCATION OF GOVERNMENT CORNER

County of Anoka

State of Minnesota

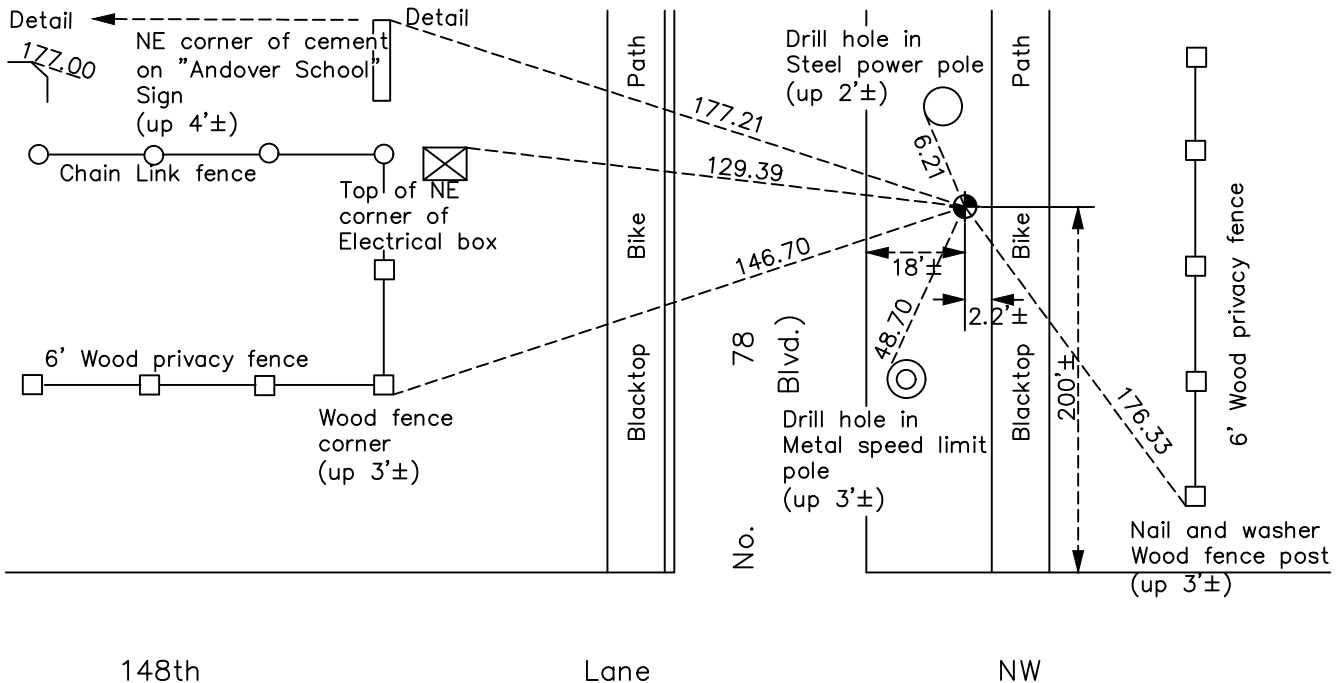
## Northeast Corner of Sec. 27 Township 32 Range 24

On the 20th day of August, 1964, the described corner was evidenced by a 1" iron pipe

and to perpetuate the location of said corner, at the exact location thereof, a permanent marker was placed consisting of a cast iron monument

AND on the 2nd day of June, 2020, said permanent marker was reset with a CIM after road construction using static GPS methods, set flush to surface and the ties were updated.

Updated reference ties are as shown below.



No. 78  
Blvd.  
C.S.A.H.  
(Hanson)

N  
W ANOKA COUNTY SURVEYOR E  
S

Revision Date  
02/10/2021

N.A.D. 1983 Coordinates  
(1996 Adjustment)

County Project Coordinates	
Northing	175022.7449
Easting	489869.7119
Date	6/30/00

I hereby certify that this United States public land survey monument record is correct and complete to the best of my knowledge and belief.

\_\_\_\_\_ Date \_\_\_\_\_

David M. Zieglmeier, Anoka County Surveyor  
Minnesota License Number 46179

# HISTORY OF GOVERNMENT CORNER

County of Anoka

State of Minnesota

## Northeast Corner of Sec. 27 Township 32 Range 24

### **CORNER HISTORY:**

August 20, 1964 – Found 1” iron pipe flush with the surface using ties by Robert M. Knudsen dated November 3, 1960. Established ties to monument.

October 28, 1969 – Set construction ties prior to power line construction.

June 17, 1970 – Found 1” iron pipe and updated ties. Set steel fence post up 2'± on north side of iron pipe.

June 30, 1972 – Found 1” iron pipe and updated ties.

June 7, 1976 – Found 1” iron pipe and updated ties.

June 11, 1979 – Found 1” iron pipe and updated ties.

November 4, 1981 – Replaced 1” iron pipe with a cast iron monument after moving corner fence post. Set sign and post on south side of monument and updated ties.

June 22, 1982 – Found cast iron monument and updated ties.

July 27, 1988 – Found cast iron monument and updated ties.

July 19, 1993 – Found cast iron monument and updated ties.

June 30, 2000 – Found cast iron monument with sign and post on north side and established NAD 1983 (1996 Adjustment) Anoka County Project Coordinates by Static GPS methods. Updated ties.

October 11, 2010 – Found cast iron monument up 0.1'± with sign and post on north side and updated ties.

February 8, 2016 – Found cast iron monument up 0.1'± with sign and post on north side and updated ties.

June 2, 2020 – Set cast iron monument flush with surface after completion of road construction using static GPS methods.

June 9, 2020 – Found cast iron monument and updated ties of newly set monument.