

# CERTIFICATE OF LOCATION OF GOVERNMENT CORNER

County of Anoka

State of Minnesota

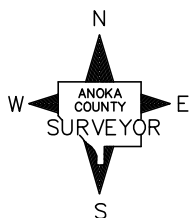
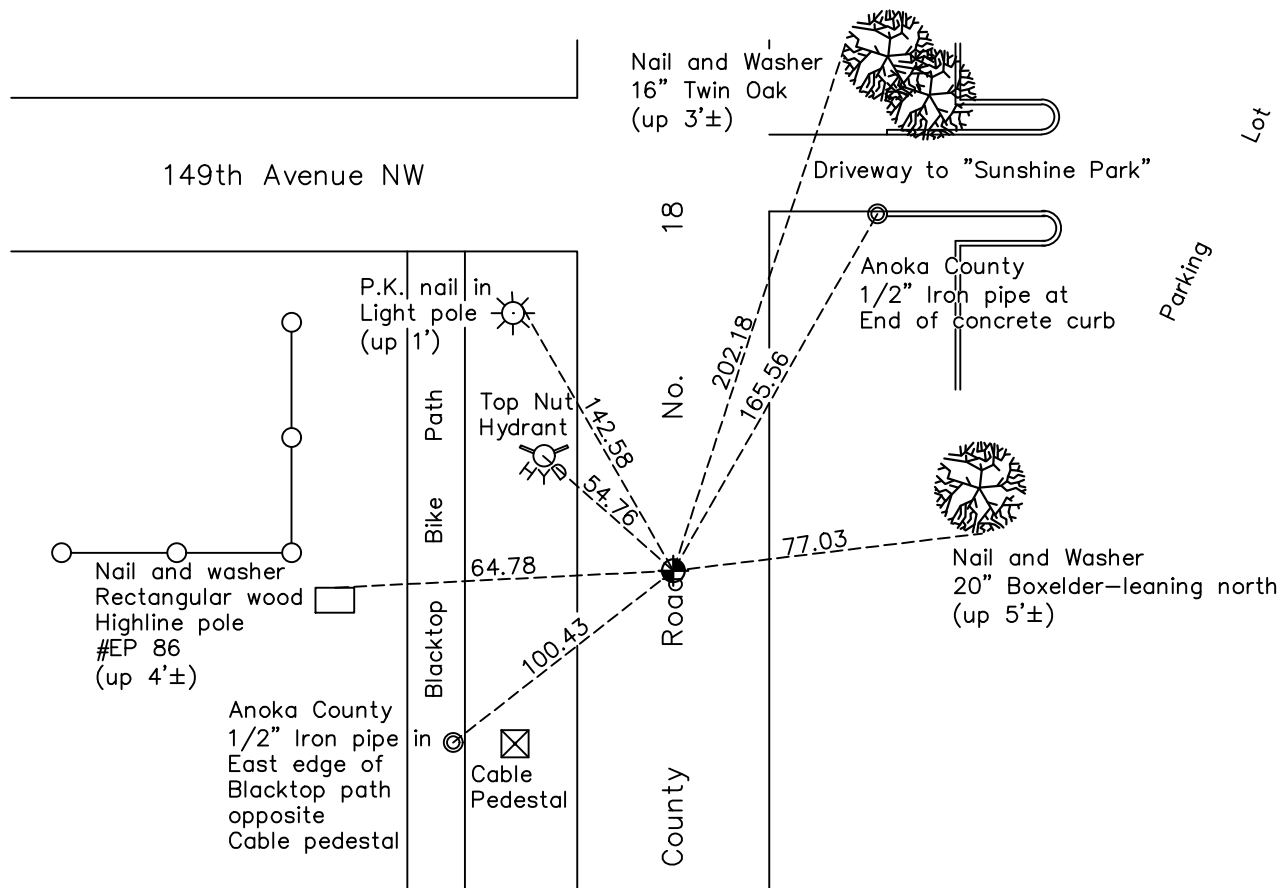
## North 1/4 Corner of Sec. 27 Township 32 Range 24

On the 11th day of June, 1959, the described corner was evidenced by a 1/4" solid iron rod

and to perpetuate the location of said corner, at the exact location thereof, a permanent marker was placed consisting of a cast iron monument

AND on the 13th day of November, 2020, said permanent marker was found at the surface and the ties were updated

Updated reference ties are as shown below.



N.A.D. 1983 Coordinates  
(1996 Adjustment)

County Project Coordinates	
Northing	<u>175059.9222</u>
Easting	<u>487219.3196</u>
Date	<u>7/31/00</u>

Revision Date  
**02/10/2021**

I hereby certify that this United States public land survey monument record is correct and complete to the best of my knowledge and belief.  
*David M Zieglermeier* Date 7/30/21  
 David M. Zieglermeier, Anoka County Surveyor  
 Minnesota License Number 46179

# HISTORY OF GOVERNMENT CORNER

County of Anoka

State of Minnesota

## North 1/4 Corner of Sec. 27 Township 32 Range 24

### **CORNER HISTORY:**

June 11, 1959 – Found 1/4” rod flush with the surface. Established ties to monument.

August 20, 1964 – Found 1/4” rod and updated ties.

July 26, 1968 – Replaced 1/4” rod with a cast iron monument set flush with the surface. Set P.K. nails 2.00’ north and east of monument and updated ties.

June 30, 1972 – Found cast iron monument and updated ties.

June 7, 1976 – Found cast iron monument and updated ties.

June 6, 1979 – Found cast iron monument and updated ties.

June 25, 1982 – Found cast iron monument and updated ties.

June 6, 1985 – Found cast iron monument and updated ties.

July 29, 1988 – Found cast iron monument and updated ties.

July 21, 1993 – Found cast iron monument and updated ties.

October 4, 1993 – Found cast iron monument and updated ties.

July 31, 2000 – Found cast iron monument and established NAD 1983 (1996 Adjustment) Anoka County Project Coordinates by Static GPS methods. Updated ties.

April 30, 2010 – Updated ties prior to road construction. Left cast iron monument in place.

July 15, 2010 – Added spacer/s and replaced top of cast iron monument. Monument is flush with surface. Updated ties.

July 15, 2016 – Found cast iron monument flush with the surface and updated ties.

November 13, 2020 – Found cast iron monument flush with the surface and updated ties.