

CERTIFICATE OF LOCATION OF GOVERNMENT CORNER

County of Anoka

State of Minnesota

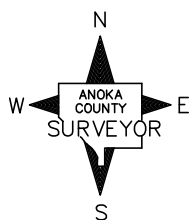
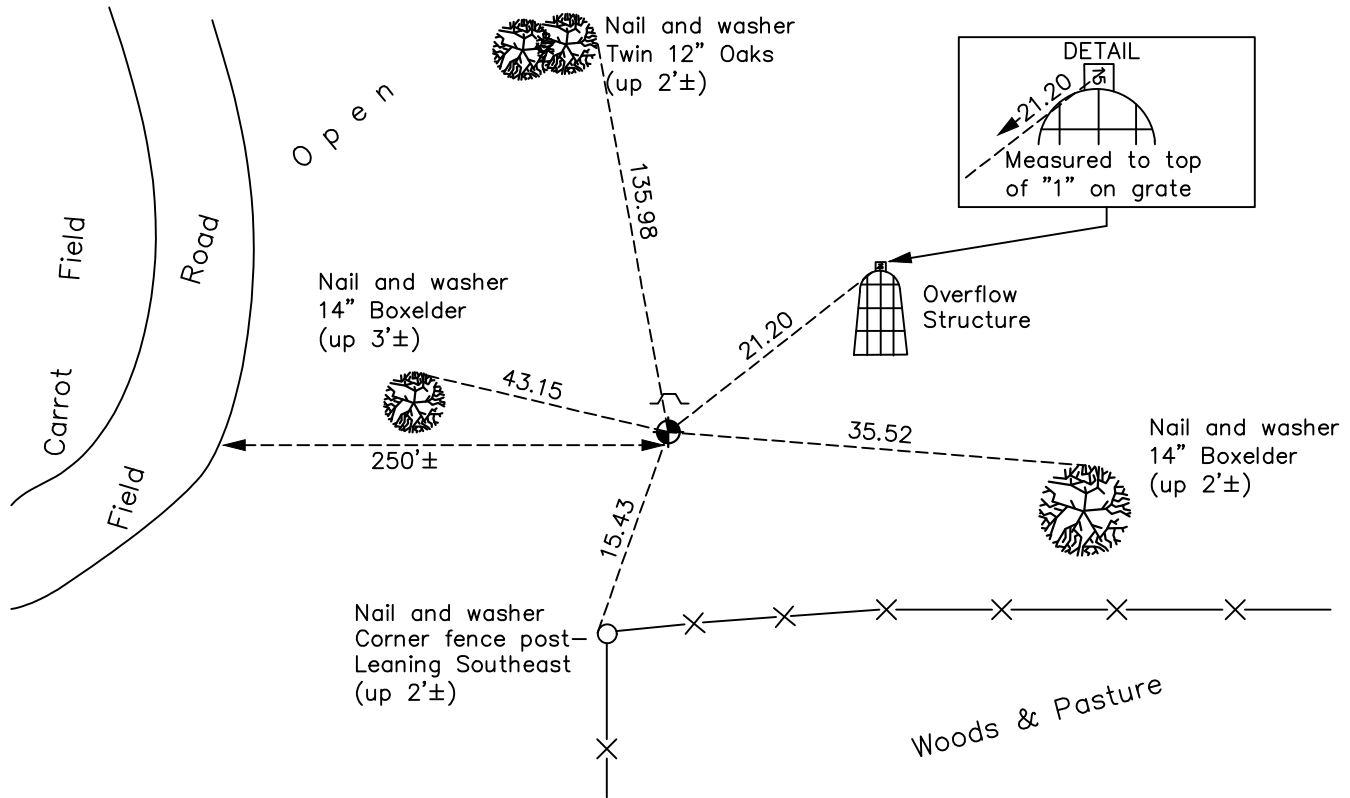
Northwest Corner of Sec. 27 Township 32 Range 24

On the 8th day of August, 1960, the described corner was evidenced by a 1/2" iron pipe

and to perpetuate the location of said corner, at the exact location thereof, a permanent marker was placed consisting of a cast iron monument with a sign and post on the north side

AND on the 25th day of May, 2023, said permanent marker was adjusted leaning cast iron monument, flush and to Anoka County coordinates. Established ties to monument.

Updated reference ties are as shown below.



Revision Date
5/31/2023

N.A.D. 1983 Coordinates
 (1996 Adjustment)

County Project Coordinates	
Northing	<u>175109.7693</u>
Easting	<u>484602.8766</u>
Date	<u>7/31/00</u>

I hereby certify that this United States public land survey monument record is correct and complete to the best of my knowledge and belief.

David Zieglermeier Date 6/26/23

David M. Zieglermeier, Anoka County Surveyor
 Minnesota License Number 46179

HISTORY OF GOVERNMENT CORNER

Page No. 84

County of Anoka

State of Minnesota

Northwest Corner of Sec. 27 Township 32 Range 24

CORNER HISTORY:

May 1855 - This corner was established by James M. Marsh, Deputy Surveyor. Marsh marked the position by "set post for corner to sections 21, 22, 27 and 28" with two bearing trees as accessories.

August 8, 1960 - Found 0.3' X 0.4' iron pin flush with the surface. Established ties to monument.

July 29, 1968 - Replaced 0.3' x 0.4' iron pin with a cast iron monument. Updated ties.

7/13/72, 6/8/76, 6/6/79, 6/28/82, 5/28/85 - Found cast iron monument and updated ties.

August 10, 1988 - Reset cast iron monument and updated ties.

July 31, 2000 - Found cast iron monument with sign and post on north side (date set unknown) and established NAD 1983 (1996 Adjustment) Anoka County Project Coordinates by Static GPS methods. Updated ties.

October 11, 2010 - Found cast iron monument up 0.1'± and updated ties.

July 21, 2016 - Found cast iron monument up 0.3'± and updated ties.

November 17, 2020 - Found cast iron monument leaning SE. Updated ties.

May 25, 2023 - Adjusted leaning cast iron monument, flush and to Anoka County coordinates using RTK GPS methods. Updated ties after adjustment.