

CERTIFICATE OF LOCATION OF GOVERNMENT CORNER

County of Anoka

State of Minnesota

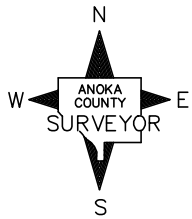
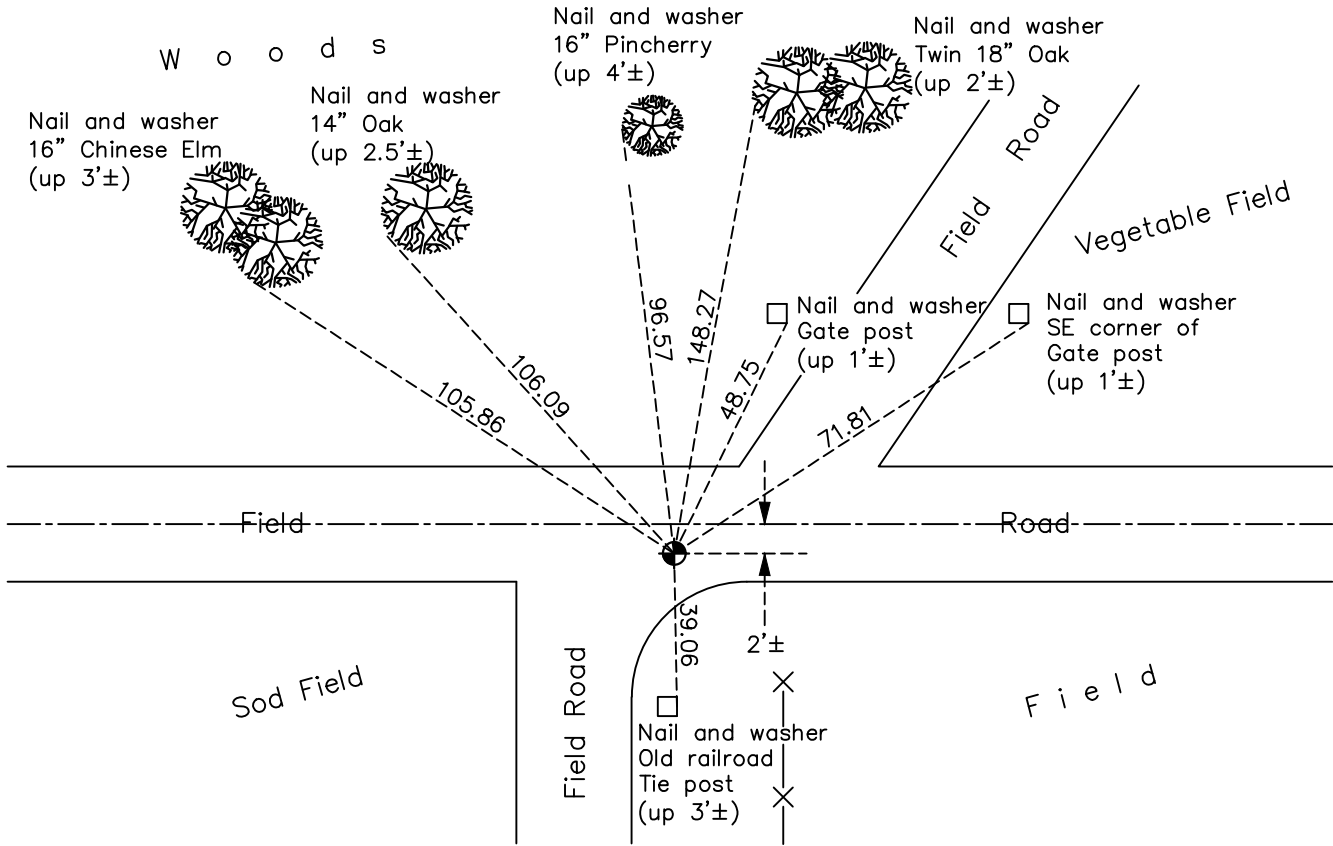
South 1/4 Corner of Sec. 21 Township 32 Range 24

On the 10th day of August, 1960, the described corner was evidenced by a 1 1/2" iron pipe with round field stone

and to perpetuate the location of said corner, at the exact location thereof, a permanent marker was placed consisting of a cast iron monument

AND on the 17th day of November, 2020, said permanent marker was found down 0.6'± and the ties were updated

Updated reference ties are as shown below.



Revision Date
02/10/2021

N.A.D. 1983 Coordinates
(1996 Adjustment)

County Project Coordinates	
Northing	<u>175101.1682</u>
Easting	<u>481956.1742</u>
Date	<u>11/06/01</u>

I hereby certify that this United States public land survey monument record is correct and complete to the best of my knowledge and belief.

David M Zieglmeier Date 7/30/21

David M. Zieglmeier, Anoka County Surveyor
Minnesota License Number 46179

HISTORY OF GOVERNMENT CORNER

County of Anoka

State of Minnesota

South 1/4 Corner of Sec. 21 Township 32 Range 24

CORNER HISTORY:

August 10, 1960 – Found 1 1/2” iron pipe down 6”± with a round field stone on northeasterly side. Established ties to monument.

August 26, 1964 – Found 1 1/2” iron pipe and updated ties.

July 26, 1968 – Replaced 1 1/2” iron pipe with a cast iron monument set down 0.6’±. Updated ties.

July 13, 1972 – Found cast iron monument and updated ties.

June 8, 1976 – Found cast iron monument and updated ties.

June 8, 1979 – Found cast iron monument and updated ties.

June 25, 1982 – Found cast iron monument and updated ties.

May 28, 1985 – Found cast iron monument and updated ties.

August 16, 1988– Reset cast iron monument down 1’± and updated ties.

July 22, 1993 – Found cast iron monument and updated ties.

November 6, 2001 – Found cast iron monument and established NAD 1983 (1996 Adjustment) Anoka County Project Coordinates by Static GPS methods. Updated ties.

October 11, 2010 – Found cast iron monument down 0.6’± and updated ties.

July 20, 2016 – Found cast iron monument down 0.6’± and updated ties.

November 17, 2020 – Found cast iron monument down 0.6’± and updated ties.