

CERTIFICATE OF LOCATION OF GOVERNMENT CORNER

County of Anoka

State of Minnesota

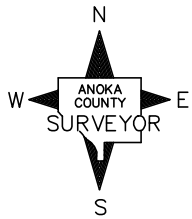
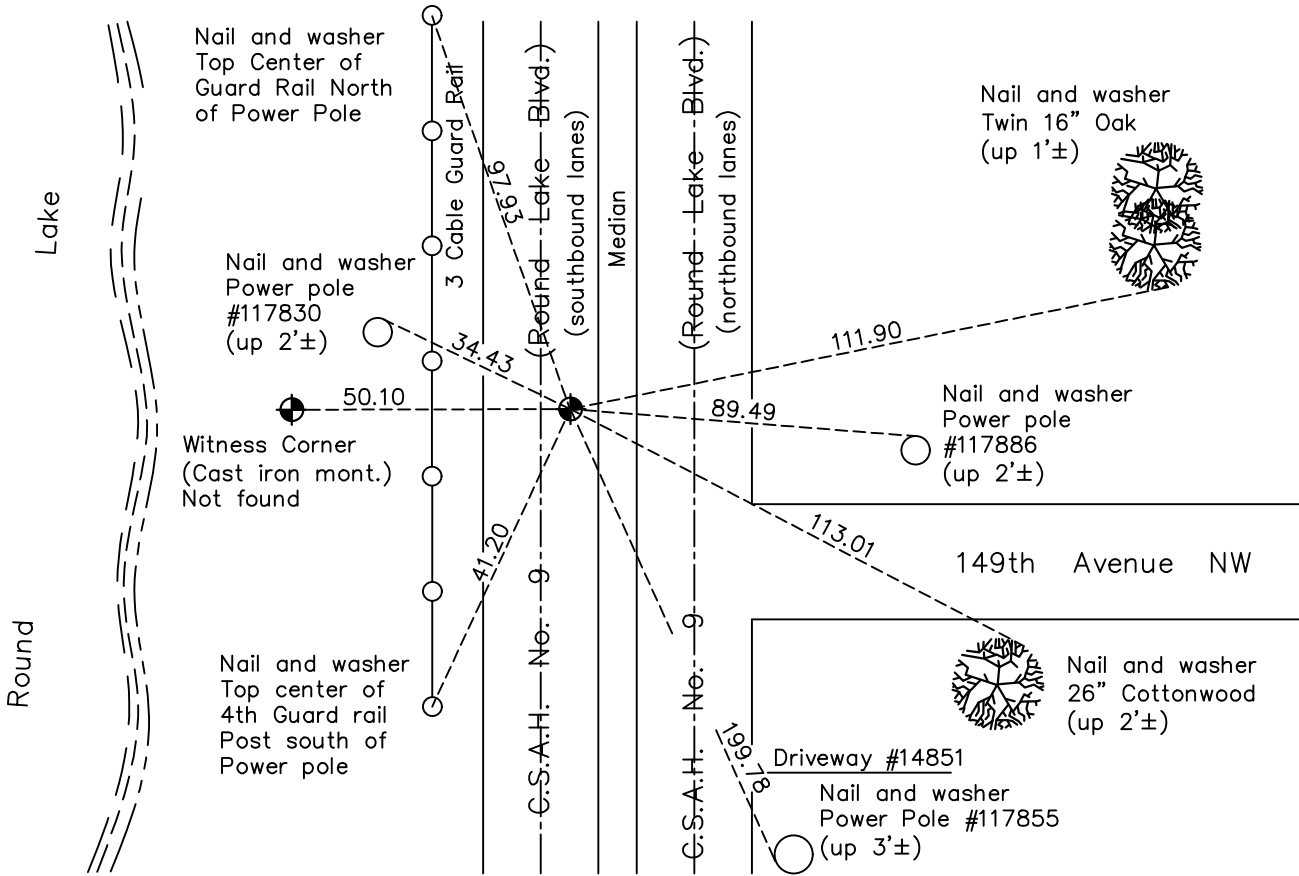
Southeast Corner of Sec. 20 Township 32 Range 24

On the 1st day of July, 1963, the described corner was evidenced by a granite monument

and to perpetuate the location of said corner, at the exact location thereof, a permanent marker was placed consisting of a cast iron monument

AND on the 13th day of October, 2020, said permanent marker was found flush with the surface and the ties were updated. Monument is in middle of easterly southbound lane.

Updated reference ties are as shown below.



Revision Date
 02/10/2021

N.A.D. 1983 Coordinates
 (1996 Adjustment)

County Project Coordinates	
Northing	175067.6493
Easting	479322.2180
Date	10/12/00

I hereby certify that this United States public land survey monument record is correct and complete to the best of my knowledge and belief.
David M Zieglmeier Date 7/30/21
 David M. Zieglmeier, Anoka County Surveyor
 Minnesota License Number 46179

HISTORY OF GOVERNMENT CORNER

Page No. 86

County of Anoka

State of Minnesota

Southeast Corner of Sec. 20 Township 32 Range 24

CORNER HISTORY:

July 1, 1963 – Found 8” square granite monument set down 0.7’. Set railroad spike above monument and flush with the surface. Also set P.K. nails 3.00’ northeast and northwest of monument. Established ties to monument.

August 25, 1964 – Found railroad spike and updated ties.

July 22, 1968 – Found railroad spike and updated ties.

July 5, 1972 – Found railroad spike and updated ties.

August 6, 1980 – Lowered granite monument $4' \pm$ prior to road construction.

October 1, 1980 – Set cast iron monument above granite monument and flush with the surface after road construction. Updated ties.

June 25, 1982 – Found cast iron monument and updated ties.

May 28, 1985 – Found cast iron monument and updated ties.

August 16, 1988 – Found cast iron monument and updated ties.

July 19, 1993 – Found cast iron monument and updated ties.

April 16, 1999 – Found cast iron monument and updated ties.

October 12, 2000 – Found cast iron monument and established NAD 1983 (1996 Adjustment) Anoka County Project Coordinates by Static GPS methods.

April 15, 2004 – Set construction ties and removed cast iron monument prior to road construction.

August 16, 2005 – Found that cast iron monument needs replacing.

September 7, 2005 – Replaced cast iron monument and updated ties.

October 13, 2010 – Found cast iron monument flush with the surface and updated ties.

July 20, 2016 – Found cast iron monument flush with the surface. Verified location of corner by VRS GPS methods and updated ties.

October 13, 2020 – Found cast iron monument flush with the surface. Verified location of corner by VRS GPS methods and updated ties.