

CERTIFICATE OF LOCATION OF GOVERNMENT CORNER

County of Anoka

State of Minnesota

Witness Corner of Sec. 20 Township 32 Range 24

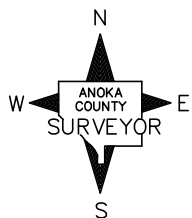
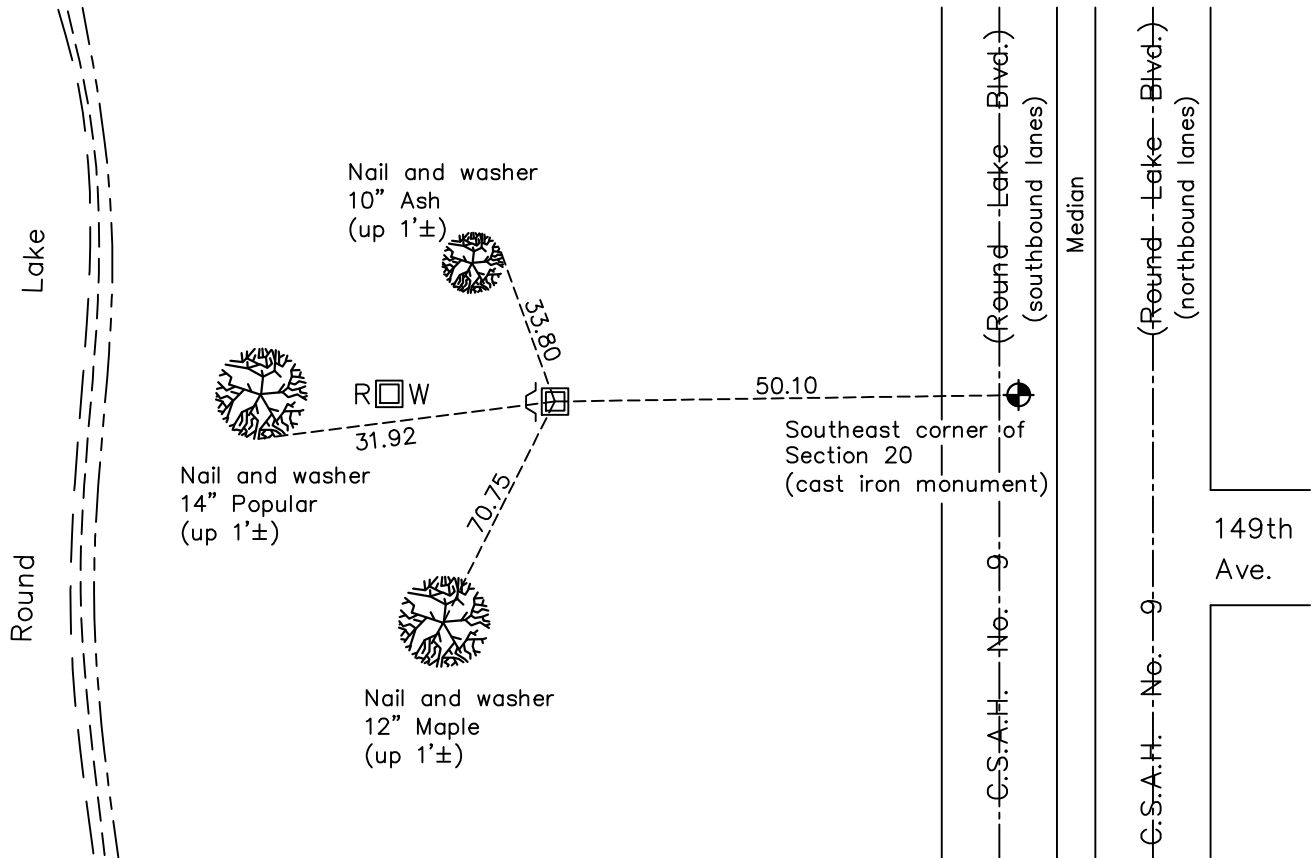
(East side of Round Lake)

On the 2nd day of July, 1963, the described corner was evidenced by area resurvey

and to perpetuate the location of said corner, at the exact location thereof, a permanent marker was placed consisting of a cast iron monument with a sign and post on the north side

AND on the 5th day of April, 2023, said permanent marker was not found. Corner was reset with a 2" sq. Telspar w/ cap and punch mark up 0.5'±. No existing ties found, new ties set.

Updated reference ties are as shown below.



Revision Date

4/07/2023

N.A.D. 1983 Coordinates
(1996 Adjustment)

County Project Coordinates	
Northing	<u>175068.133</u>
Easting	<u>479272.121</u>
Date	<u>4/07/2023</u>

I hereby certify that this United States public land survey monument record is correct and complete to the best of my knowledge and belief.

David Zieglsmeier Date 6/26/13

David M. Zieglsmeier, Anoka County Surveyor
Minnesota License Number 46179

HISTORY OF GOVERNMENT CORNER

Page No. 87

County of Anoka

State of Minnesota

Witness Corner of Sec. 20 Township 32 Range 24
(East side of Round Lake)

CORNER HISTORY:

July 2, 1963 – Set cast iron monument up 0.2'± using area resurvey and established ties to monument.

August 25, 1964 – Found cast iron monument and updated ties.

July 22, 1968 – Found cast iron monument and updated ties.

July 5, 1972 – Found cast iron monument and updated ties.

June 8, 1976 – Found cast iron monument and updated ties.

December 1979 – Plat REVISION OF SHEETS OF 2 AND 3 ANOKA COUNTY HIGHWAY RIGHT-OF-WAY PLAT NO. 14 showing Witness Corner 50.11 feet west of Southeast Corner Section 20 and 9.89 feet east of Right of way monument.

June 21, 1982 – Found cast iron monument and updated ties.

May 28, 1985 – Found cast iron monument and updated ties.

August 10, 1988 – Found cast iron monument with sign and post on north side (date set unknown)and updated ties.

July 19, 1993 – Found cast iron monument and updated ties.

July 20, 2016 – Monument was found missing.

April 5, 2023 – Corner reset with 6' x 2" square steel Telspar, cap and punch mark using ACS RTK GPS method to computed coordinates. No existing ties found, new ties set. Added sign and post to West side facing East.