

# CERTIFICATE OF LOCATION OF GOVERNMENT CORNER

County of Anoka

State of Minnesota

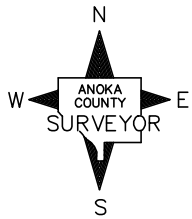
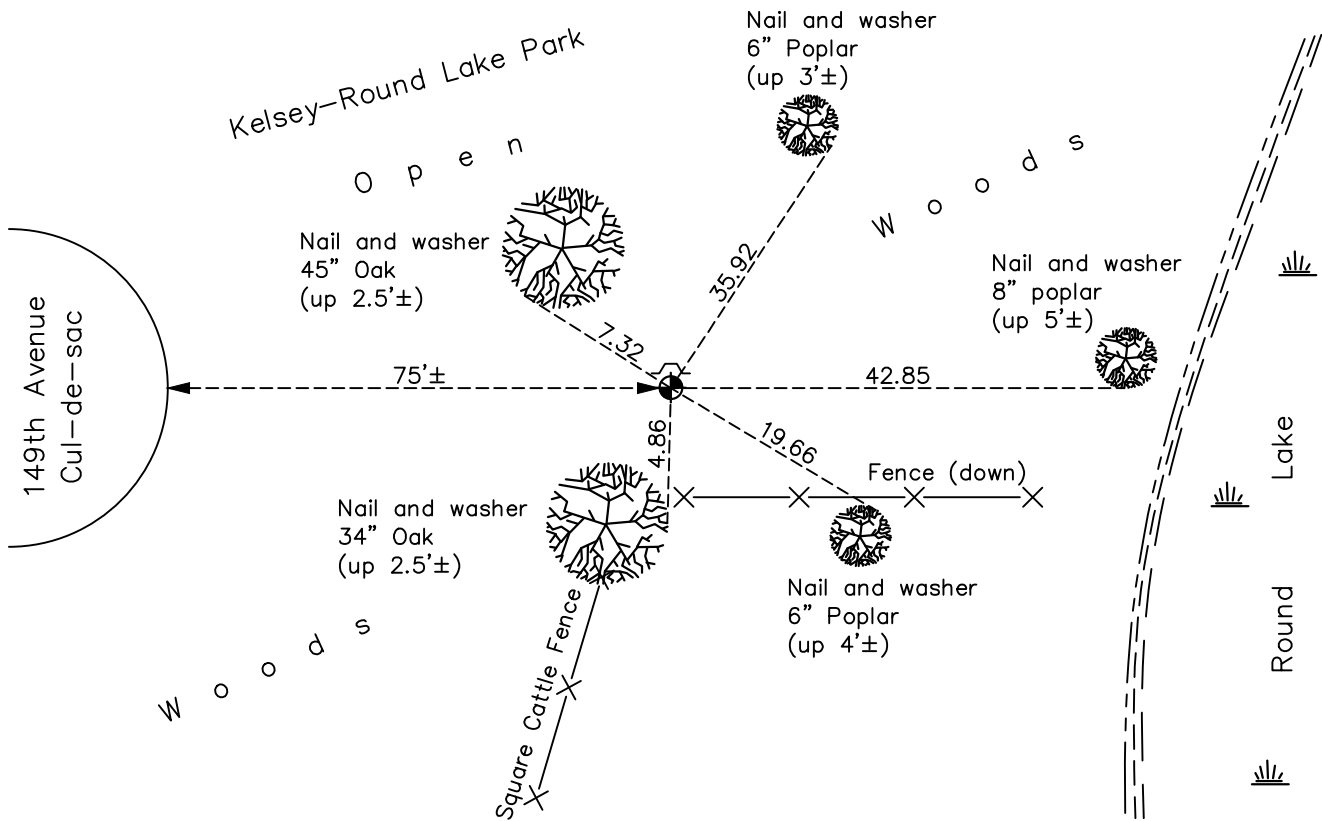
## Meander#9 Corner of Sec. 20 Township 32 Range 24

On the 2nd day of July, 1963, the described corner was evidenced by area resurvey

and to perpetuate the location of said corner, at the exact location thereof, a permanent marker was placed consisting of a cast iron monument sitting on top of a large tree root, with a sign and post on the north side

AND on the 23rd day of October, 2020, said permanent marker was found up 0.2'± and the ties were updated

Updated reference ties are as shown below.



Revision Date  
 02/11/21

N.A.D. 1983 Coordinates  
 (1996 Adjustment)

County Project Coordinates	
Northing	175113.9489
Easting	474707.2432
Date	1/02/01

I hereby certify that this United States public land survey monument record is correct and complete to the best of my knowledge and belief.

*David M Zieglmeier* Date 7/30/21

David M. Zieglmeier, Anoka County Surveyor  
 Minnesota License Number 46179

# HISTORY OF GOVERNMENT CORNER

County of Anoka

State of Minnesota

## Meander#9 Corner of Sec. 20 Township 32 Range 24

### **CORNER HISTORY:**

July 2, 1963 – Set cast iron monument up  $0.3'\pm$  using area resurvey and established ties to monument.

August 25, 1964 – Found cast iron monument and updated ties.

July 22, 1968 – Found cast iron monument and updated ties.

July 11, 1972 – Found cast iron monument and updated ties.

June 3, 1976 – Found cast iron monument and updated ties.

August 15, 1977 – Found cast iron monument and updated ties.

June 8, 1979 – Found cast iron monument and updated ties.

June 21, 1982 – Found cast iron monument and updated ties.

June 12, 1985 – Found cast iron monument and updated ties.

July 28, 1988 – Found cast iron monument and updated ties.

July 19, 1993 – Found cast iron monument with sign and post on north side (date set unknown) and updated ties.

January 2, 2001 – Found cast iron monument and established NAD 1983 (1996 Adjustment) Anoka County Project Coordinates by Static GPS methods. Updated ties.

October 29, 2010 – Found cast iron monument up  $0.2'\pm$  with sign and post on north side and updated ties.

July 25, 2016 – Found cast iron monument up  $0.2'\pm$  with sign and post on north side and updated ties.

October 23, 2020 – Found cast iron monument up  $0.2'\pm$  with sign and post on north side and updated ties.