

CERTIFICATE OF LOCATION OF GOVERNMENT CORNER

County of Anoka

State of Minnesota

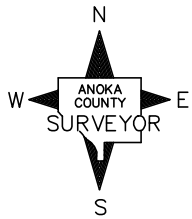
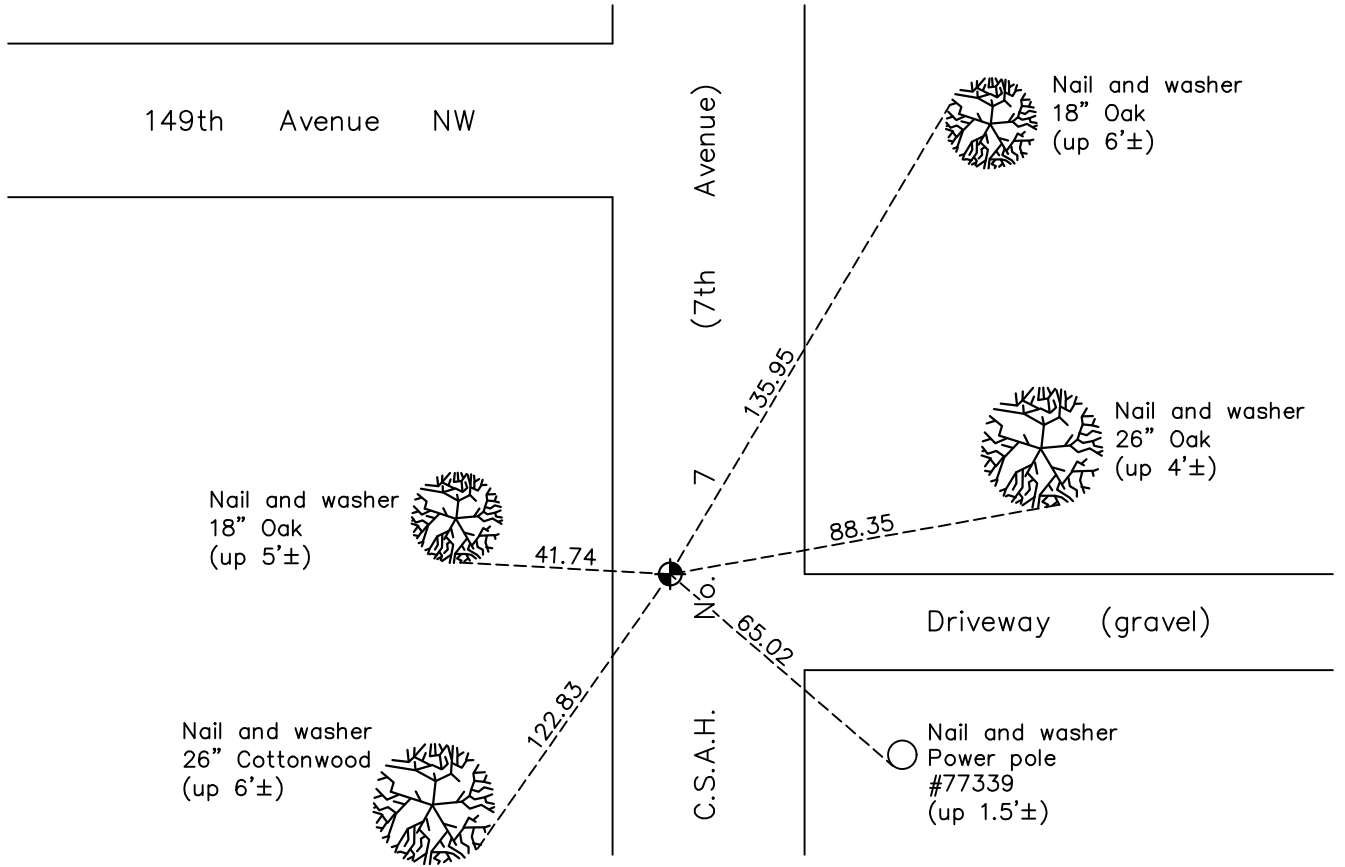
South 1/4 Corner of Sec. 19 Township 32 Range 24

On the 1st day of July, 1963, the described corner was evidenced by area resurvey

and to perpetuate the location of said corner, at the exact location thereof, a permanent marker was placed consisting of a partial cast iron monument set in concrete

AND on the 23rd day of October, 2020, said permanent marker was found flush with the surface and the ties were updated

Updated reference ties are as shown below.



Revision Date
 02/11/2016

N.A.D. 1983 Coordinates
 (1996 Adjustment)

County Project Coordinates	
Northing	175111.4330
Easting	471412.7287
Date	5/08/00

I hereby certify that this United States public land survey monument record is correct and complete to the best of my knowledge and belief.

David M Zieglmeier Date 7/30/21

David M. Zieglmeier, Anoka County Surveyor
 Minnesota License Number 46179

HISTORY OF GOVERNMENT CORNER

Page No. 90

County of Anoka

State of Minnesota

South 1/4 Corner of Sec. 19 Township 32 Range 24

CORNER HISTORY:

July 1, 1963 – Set cast iron monument flush with the surface using area resurvey and established ties to monument.

August 25, 1964 – Found cast iron monument and updated ties.

July 16, 1968 – Found cast iron monument and updated ties.

July 5, 1972 – Found cast iron monument and updated ties.

June 8, 1976 – Found cast iron monument and updated ties.

October 2, 1978 – Replaced 1/2" iron pipe (date set unknown) with a cast iron monument and updated ties. Set P.K. nails 2.00' north and east of monument.

June 7, 1979 – Found cast iron monument and updated ties.

June 30, 1982 – Found cast iron monument and updated ties.

May 29, 1985 – Found cast iron monument and updated ties.

July 28, 1988 – Found cast iron monument and updated ties.

July 14, 1993 – Found cast iron monument and updated ties.

May 8, 2000 – Found cast iron monument and established NAD 1983 (1996 Adjustment) Anoka County Project Coordinates by Static GPS methods. Set construction ties prior to road construction.

May 27, 2003 – Set construction ties and removed cast iron monument prior to road construction.

November 4, 2003 – Set partial cast iron monument in concrete flush with surface after road construction using construction ties. Verified location of corner by Static GPS methods. Updated ties.

November 1, 2010 – Found cast iron monument flush with the surface and updated ties.

February 11, 2016 – Found cast iron monument flush with the surface and updated ties.

October 23, 2020 – Found cast iron monument flush with the surface and updated ties.