

CERTIFICATE OF LOCATION OF GOVERNMENT CORNER

County of Anoka

State of Minnesota

Witness Corner of Sec. 19 Township 32 Range 24

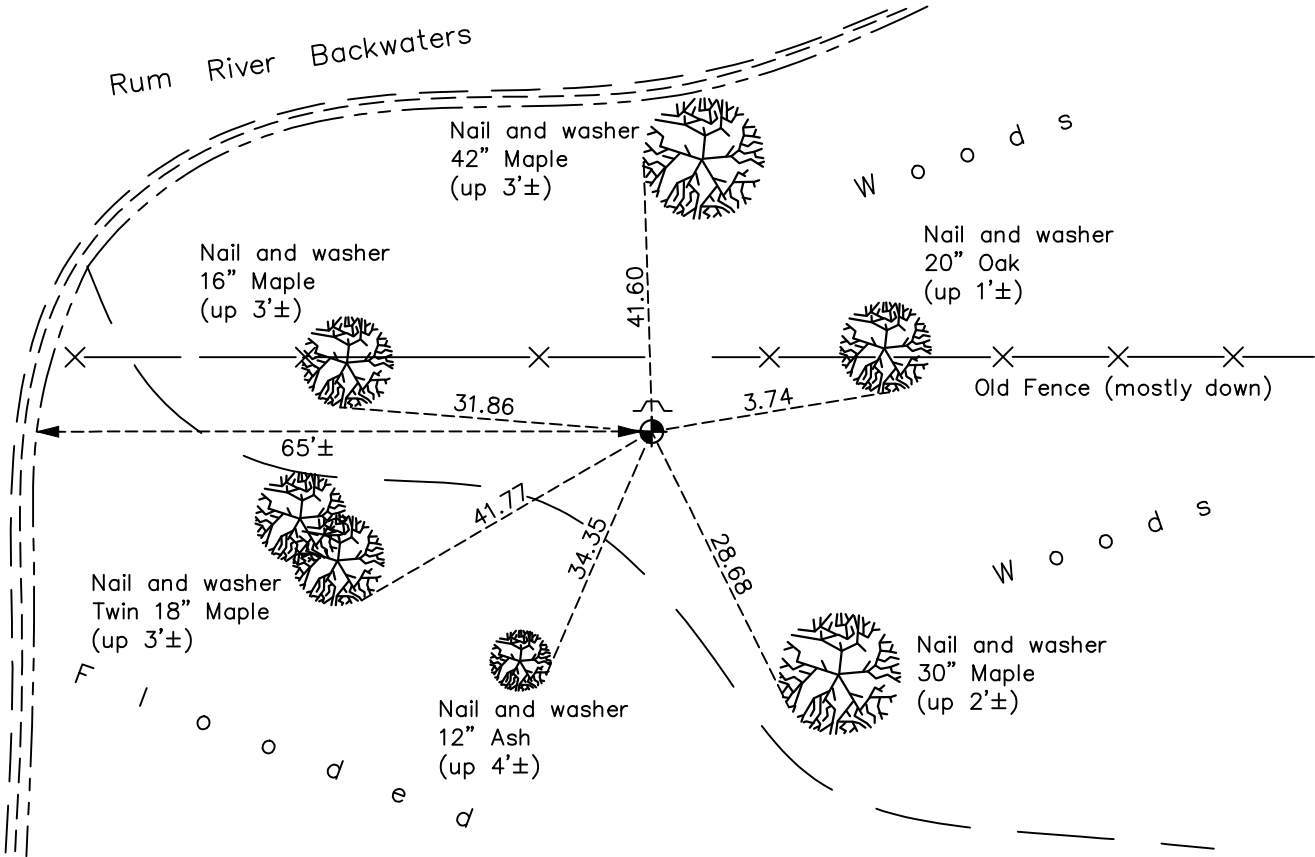
(On south line of SW 1/4 - 2104' West of S 1/4 corner)

On the 10th day of July, 1963, the described corner was evidenced by area resurvey

and to perpetuate the location of said corner, at the exact location thereof, a permanent marker was placed consisting of a cast iron monument with a sign and post on the north side

AND on the 2nd day of November, 2020, said permanent marker was found down 0.2'± and the ties were updated

Updated reference ties are as shown below.



N
W ANOKA COUNTY SURVEYOR E
S

Revision Date
02/11/2021

N.A.D. 1983 Coordinates
(1996 Adjustment)

County Project Coordinates	
Northing	175103.1383
Easting	469309.1672
Date	5/07/02

I hereby certify that this United States public land survey monument record is correct and complete to the best of my knowledge and belief.

David M Zieglmeier Date 7/30/21

David M. Zieglmeier, Anoka County Surveyor
Minnesota License Number 46179

HISTORY OF GOVERNMENT CORNER

Page No. 91

County of Anoka

State of Minnesota

Witness Corner of Sec. 19 Township 32 Range 24
(On south line of SW 1/4 - 2104' West of S 1/4 corner)

CORNER HISTORY:

July 10, 1963 – Set cast iron monument and established ties to monument.

July 16, 1968 – Found area too wet to access monument.

July 5, 1972 – Found area too wet to access monument.

June 8, 1976 – Found cast iron monument and updated ties.

July 6, 1979 – Found cast iron monument and updated ties.

July 7, 1982 – Found cast iron monument and updated ties.

June 3, 1985 – Found cast iron monument and updated ties.

August 18, 1988 – Found cast iron monument with sign and post 1'± north of monument (date set unknown) and updated ties.

January 13, 1995 – Found cast iron monument and updated ties.

May 7, 2002 – Found cast iron monument and established NAD 1983 (1996 Adjustment) Anoka County Project Coordinates by Static GPS methods.

November 1, 2010 – Found cast iron monument down 0.1'± with sign and post on north side and updated ties.

February 5, 2018 – Found cast iron monument down 0.2'± with sign and post on north side. Verified location of corner by VRS GPS methods and updated ties.

November 2, 2020 – Found cast iron monument down 0.2'± with sign and post on north side. Verified location of corner by VRS GPS methods and updated ties.