

# CERTIFICATE OF LOCATION OF GOVERNMENT CORNER

County of Anoka

State of Minnesota

## Witness Corner of Sec. 30 Township 32 Range 24

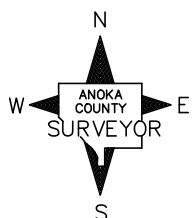
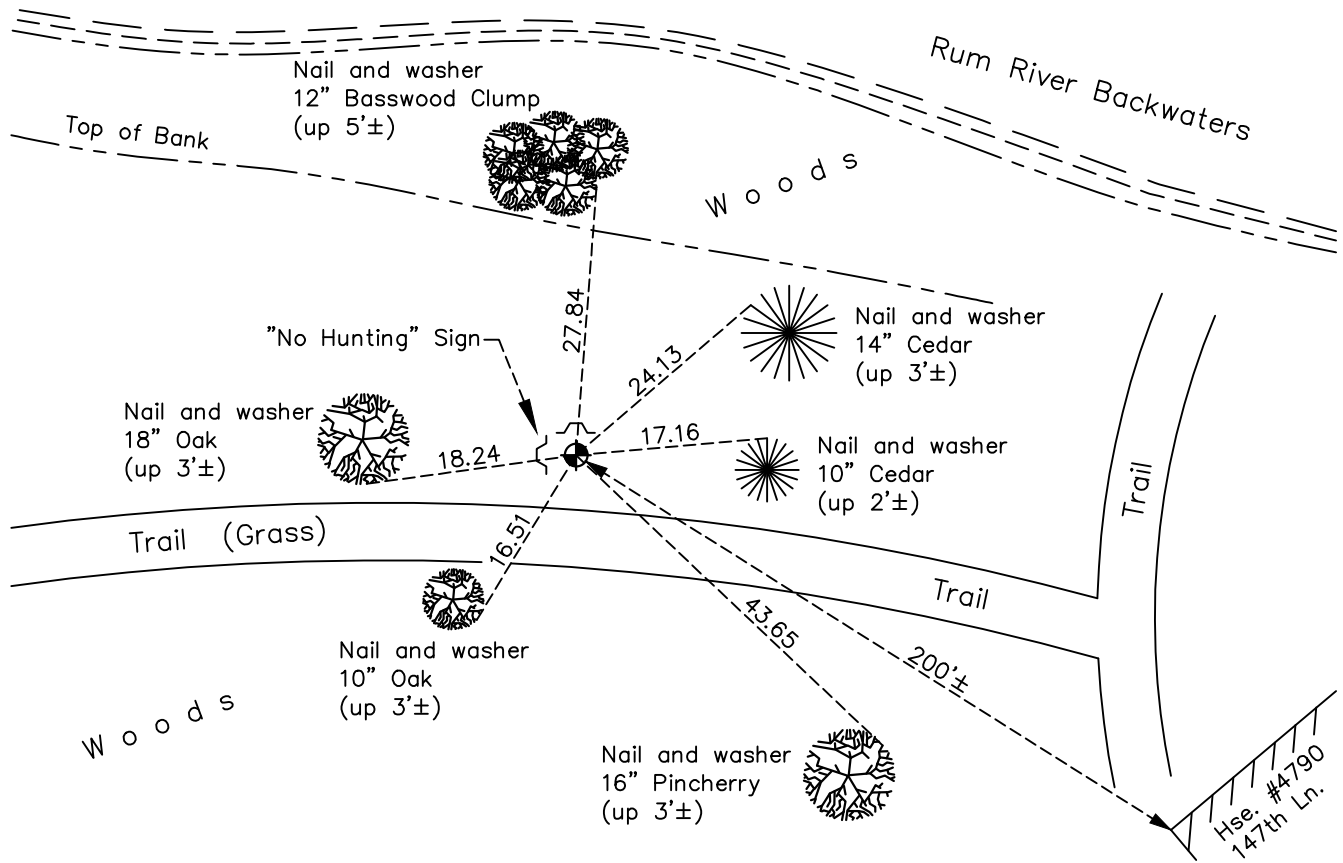
(On west line of section)

On the 20th day of September, 1963, the described corner was evidenced by area resurvey

and to perpetuate the location of said corner, at the exact location thereof, a permanent marker was placed consisting of a cast iron monument with a sign and post on the north side

AND on the 27th day of June, 2022, said permanent marker was found broken off and replaced with new CIM down 0.3'±. Verified position by VRS GPS methods. Updated ties.

Updated reference ties are as shown below.



Revision Date  
 7/7/2022

N.A.D. 1983 Coordinates  
 (1996 Adjustment)

County Project Coordinates	
Northing	174560.8686
Easting	468587.4145
Date	4/11/00

I hereby certify that this United States public land survey monument record is correct and complete to the best of my knowledge and belief.

*David Zieglermeier* Date 1/18/23

David M. Zieglermeier, Anoka County Surveyor  
 Minnesota License Number 46179

# HISTORY OF GOVERNMENT CORNER

Page No. 92

County of Anoka

State of Minnesota

Witness Corner of Sec. 30 Township 32 Range 24  
(On west line of section)

## **CORNER HISTORY:**

September 20, 1963 - Set cast iron monument up 0.1'± using area resurvey and established ties to monument.

July 16, 1968 - Found cast iron monument and updated ties.

June 9, 1976 - Found cast iron monument and updated ties.

July 6, 1979 - Found cast iron monument and updated ties.

June 21, 1982 - Found cast iron monument and updated ties.

June 3, 1985 - Found cast iron monument and updated ties.

August 17, 1988 - Found cast iron monument w/sign and post on north side (date set unknown). Updated ties.

August 2, 1993 - Found cast iron monument and updated ties.

April 11, 2000 - Found cast iron monument. Established NAD 1983 (1996 adj.) Anoka County project coordinates by static GPS methods. Updated ties.

November 1, 2010 - Found area too wet to access monument.

January 14, 2011 - Found cast iron monument and updated ties.

February 28, 2016 - Found cast iron monument and updated ties.

November 2, 2020 - Found cast iron monument with top broken off. Updated ties to center fin.

June 27, 2022 - Found cast iron monument broken off and replaced with new cast iron monument down 0.3'±. Verified position by VRS GPS methods. Updated ties.