

CERTIFICATE OF LOCATION OF GOVERNMENT CORNER

County of Anoka

State of Minnesota

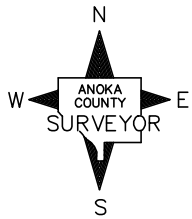
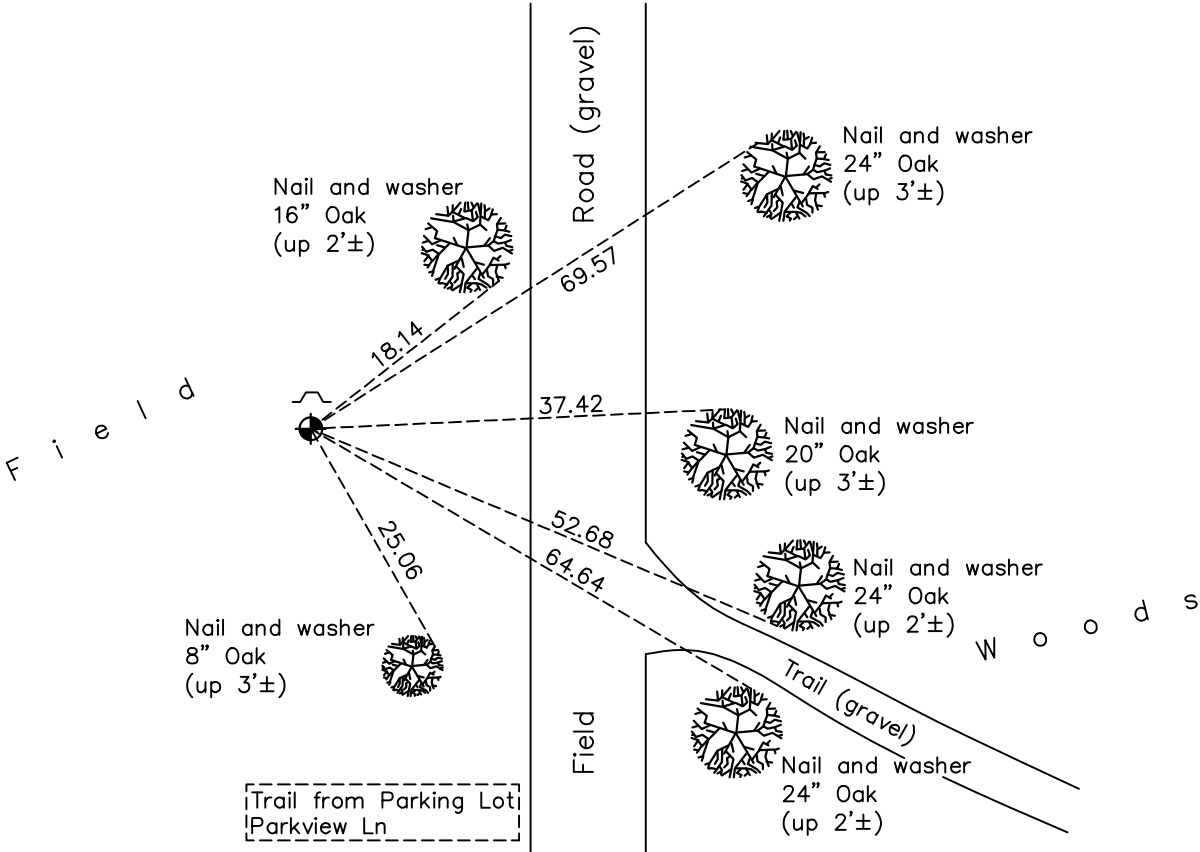
West 1/4 Corner of Sec. 30 Township 32 Range 24

On the 28th day of June, 1963, the described corner was evidenced by area resurvey

and to perpetuate the location of said corner, at the exact location thereof, a permanent marker was placed consisting of a cast iron monument with a sign and post on the north side

AND on the 27th day of October, 2020, said permanent marker was found flush with the surface and the ties were updated

Updated reference ties are as shown below.



Revision Date
02/11/2021

N.A.D. 1983 Coordinates
 (1996 Adjustment)

County Project Coordinates	
Northing	<u>172466.3545</u>
Easting	<u>468571.0123</u>
Date	<u>4/11/00</u>

I hereby certify that this United States public land survey monument record is correct and complete to the best of my knowledge and belief.

David M Zieglmeier Date 7/30/21

David M. Zieglmeier, Anoka County Surveyor
 Minnesota License Number 46179

HISTORY OF GOVERNMENT CORNER

County of Anoka

State of Minnesota

West 1/4 Corner of Sec. 30 Township 32 Range 24

CORNER HISTORY:

June 28, 1963 – Set cast iron monument flush with the surface using area resurvey and established ties to monument.

August 26, 1964 – Found cast iron monument and updated ties.

July 16, 1968 – Found cast iron monument and updated ties.

July 13, 1972 – Found cast iron monument and updated ties.

June 9, 1976 – Found cast iron monument and updated ties.

June 11, 1979 – Found cast iron monument and updated ties.

June 21, 1982 – Found cast iron monument and updated ties.

June 3, 1985 – Found cast iron monument and updated ties.

August 9, 1988 – Found cast iron monument with sign and post on north side (date set unknown) and updated ties.

July 28, 1993 – Found cast iron monument and updated ties.

April 11, 2000 – Found cast iron monument and established NAD 1983 (1996 Adjustment) Anoka County Project Coordinates by Static GPS methods. Updated ties.

October 22, 2010 – Found cast iron monument flush with the surface with a sign and post on the north side. Updated ties.

August 1, 2016 – Found cast iron monument flush with the surface with a sign and post on the north side. Updated ties.

October 27, 2020 – Found cast iron monument flush with the surface with a sign and post on the north side. Updated ties.