

CERTIFICATE OF LOCATION OF GOVERNMENT CORNER

County of Anoka

State of Minnesota

Witness Corner of Sec. 29 Township 32 Range 24

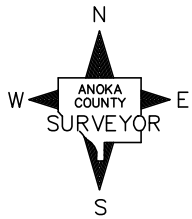
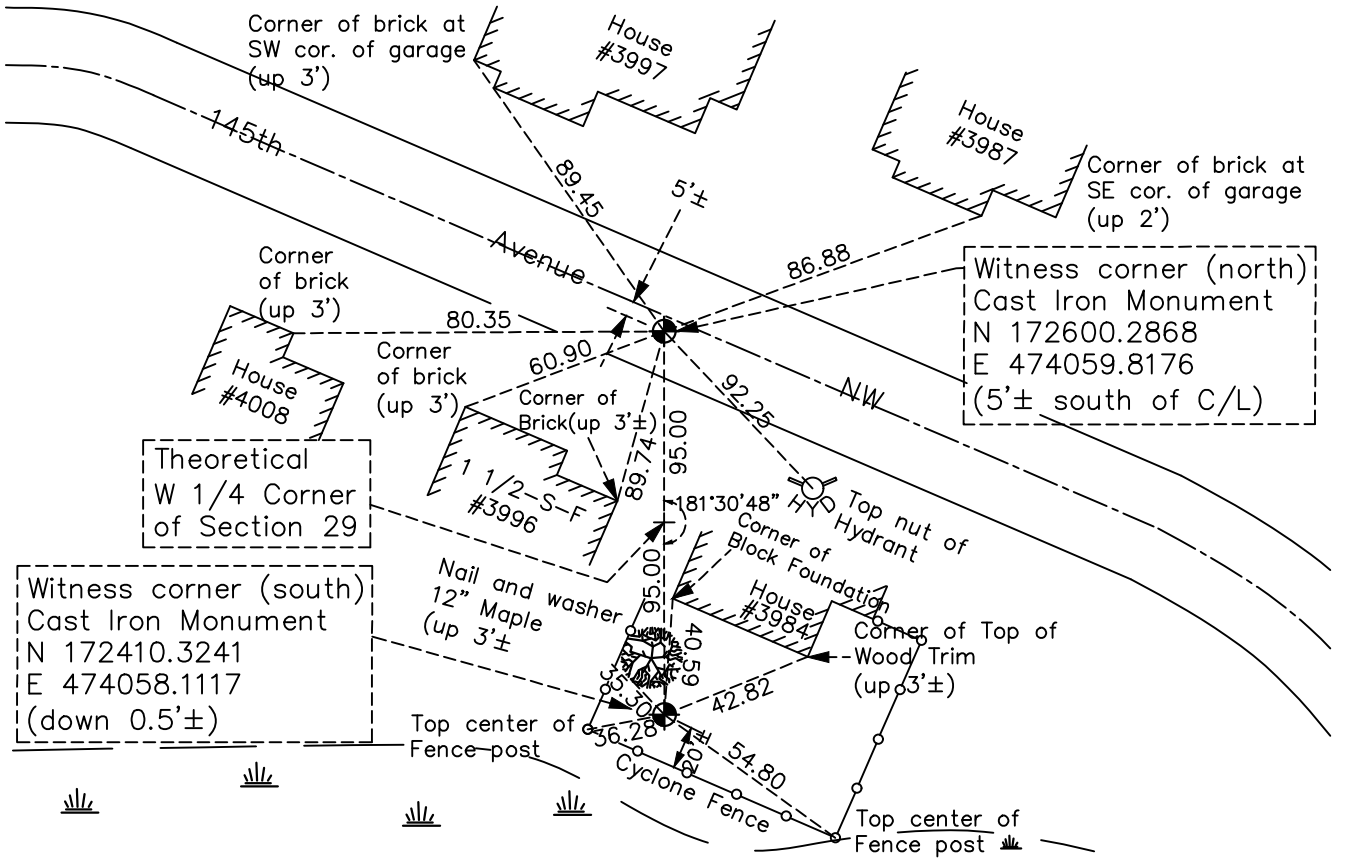
(Witness corners to W 1/4 Sec. 29)

On the 22nd day of September, 1992, the described corner was evidenced by area resurvey

and to perpetuate the location of said corner, at the exact location thereof, a permanent marker was placed consisting of cast iron monuments at both witness corners

AND on the 28th day of October, 2020, said permanent marker was found 5'± South of the center line and the ties were updated

Updated reference ties are as shown below.



Revision Date
 02/11/2021

N.A.D. 1983 Coordinates
 (1996 Adjustment)

County Project Coordinates	
Northing	See above
Easting	
Date	

I hereby certify that this United States public land survey monument record is correct and complete to the best of my knowledge and belief.
David M. Zieglermeier Date 7/30/21
 David M. Zieglermeier, Anoka County Surveyor
 Minnesota License Number 46179

HISTORY OF GOVERNMENT CORNER

Page No. 94

County of Anoka

State of Minnesota

Witness Corner of Sec. 29 Township 32 Range 24
(Witness corners to W 1/4 Sec. 29)

CORNER HISTORY:

November 15, 1962 – Found 1” iron pipe down 1’ in south rut of east–west trail across field. Set 3/4” iron pipe above 1” iron pipe and flush with trail. Also set steel snow fence post 1’± south of iron pipe. Established ties to monument.

November 12, 1964 – Replaced 1” iron pipe with a cast iron monument set flush with the surface. No ties available in the area. Set steel fence posts 0.5’ east and west of monument.

July 19, 1972 – Found cast iron monument down 0.2’± and updated ties. Set steel fence post 1.5’ north of monument.

June 9, 1976 – Found cast iron monument and updated ties.

June 11, 1979 – Found cast iron monument and updated ties.

June 21, 1982 – Found cast iron monument and updated ties.

August 11, 1988 – Found cast iron monument and updated ties.

September 22, 1992 and November 30, 1992 – Set cast iron monuments as Witness corners to the West Quarter corner of Section 29 using area resurvey. Position of W1/4 corner falls in house. Witness corners are north and south of W $\frac{1}{4}$ corner. Set sign and post on south side of southerly monument and established ties to monuments.

July 30, 1993 – Found cast iron monument Witness corners and updated ties.

January 14, 2011 – Found cast iron monument Witness corners and updated ties. North Witness corner is 4’± south of centerline of 145th Avenue NW and south Witness corner is down 0.5’± and in backyard of House No. 3984.

May 12, 2015 – Set construction ties and removed cast iron monument prior to road construction (north witness corner only).

July 15, 2015 – Set cast iron monument flush with surface after road construction using construction ties and updated ties (north witness corner only).

July 27, 2016 – Found cast iron monument Witness corners and updated ties. North Witness corner is 5’± south of centerline

October 28, 2020 – Found cast iron monument Witness corners and updated ties. North Witness corner is 5’± south of centerline