

# CERTIFICATE OF LOCATION OF GOVERNMENT CORNER

County of Anoka

State of Minnesota

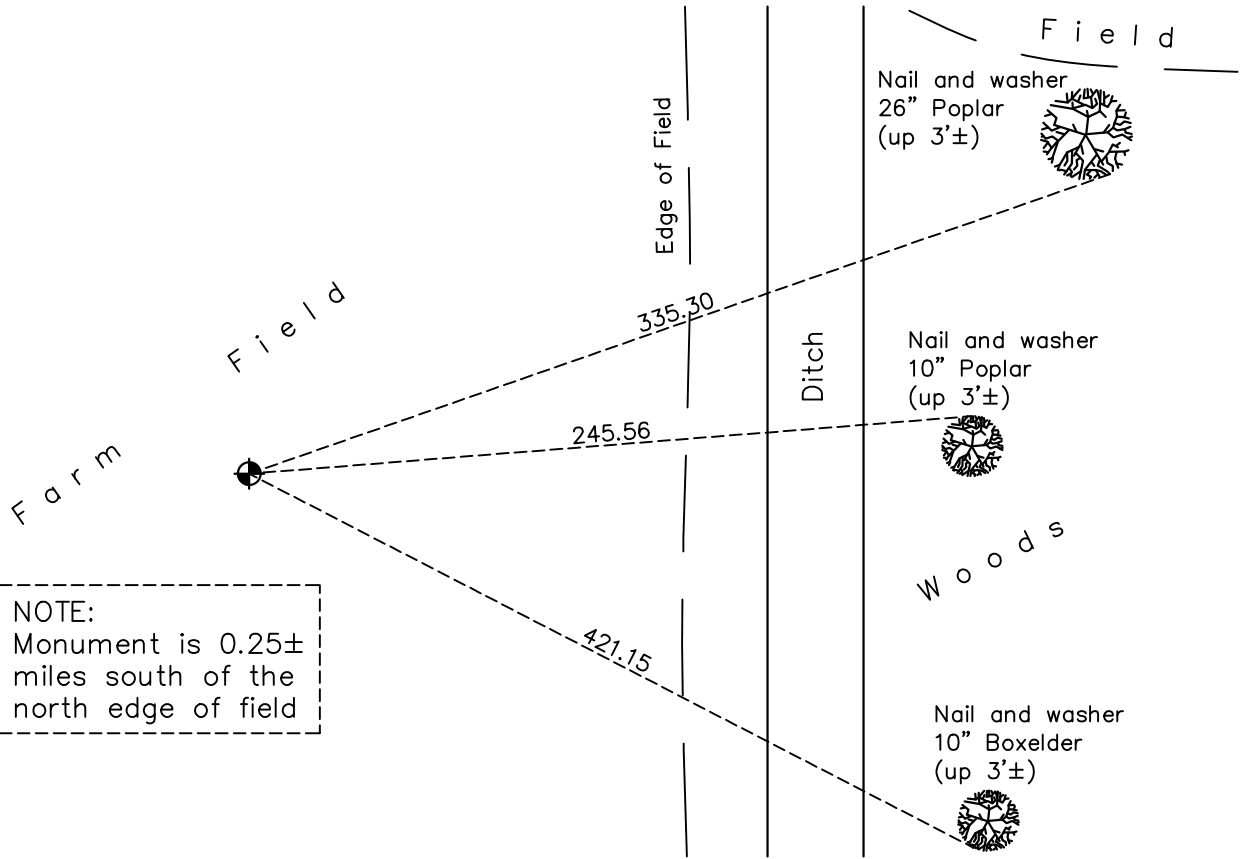
## East 1/4 Corner of Sec. 29 Township 32 Range 24

On the 15th day of July, 1970, the described corner was evidenced by area resurvey

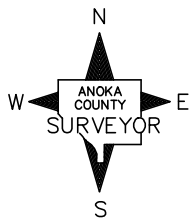
and to perpetuate the location of said corner, at the exact location thereof, a permanent marker was placed consisting of a cast iron monument down 2'±

AND on the 17th day of November, 2020, said permanent marker was found down 2'± and the ties were updated

Updated reference ties are as shown below.



NOTE:  
Monument is 0.25±  
miles south of the  
north edge of field



Revision Date  
02/11/2021

N.A.D. 1983 Coordinates  
(1996 Adjustment)

County Project Coordinates	
Northing	<u>172436.5658</u>
Easting	<u>479292.0765</u>
Date	<u>N/A</u>

I hereby certify that this United States public land survey monument record is correct and complete to the best of my knowledge and belief.  
*David M. Zieglmeier* Date 7/30/21  
David M. Zieglmeier, Anoka County Surveyor  
Minnesota License Number 46179

# HISTORY OF GOVERNMENT CORNER

Page No. 94A

County of Anoka

State of Minnesota

## East 1/4 Corner of Sec. 29 Township 32 Range 24

### **CORNER HISTORY:**

July 15, 1970 – Set iron pipe on a straight line and equal distance between the NE corner and the SE corner of Section 29 and established ties to iron pipe.

July 13, 1972 – Found iron pipe and updated ties.

June 9, 1976 – Found iron pipe and updated ties.

June 11, 1979 – Found iron pipe and updated ties.

June 29, 1982 – Found iron pipe and updated ties.

June 6, 1985 – Found iron pipe and updated ties.

September 9, 1988 – Reset corner position with a cast iron monument set down 2'± below the surface using area resurvey. Updated ties.

July 27, 1993 – Found iron pipe and updated ties.

November 5, 2010 – Found cast iron monument down 2'±. All iron pipe reference monuments and signs and posts were found missing. Re-established ties using trees in the area.

August 2, 2016 – Found cast iron monument down 2'± and updated ties.

November 17, 2020 – Found cast iron monument down 2'± and updated ties.