

CERTIFICATE OF LOCATION OF GOVERNMENT CORNER

County of Anoka

State of Minnesota

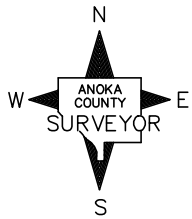
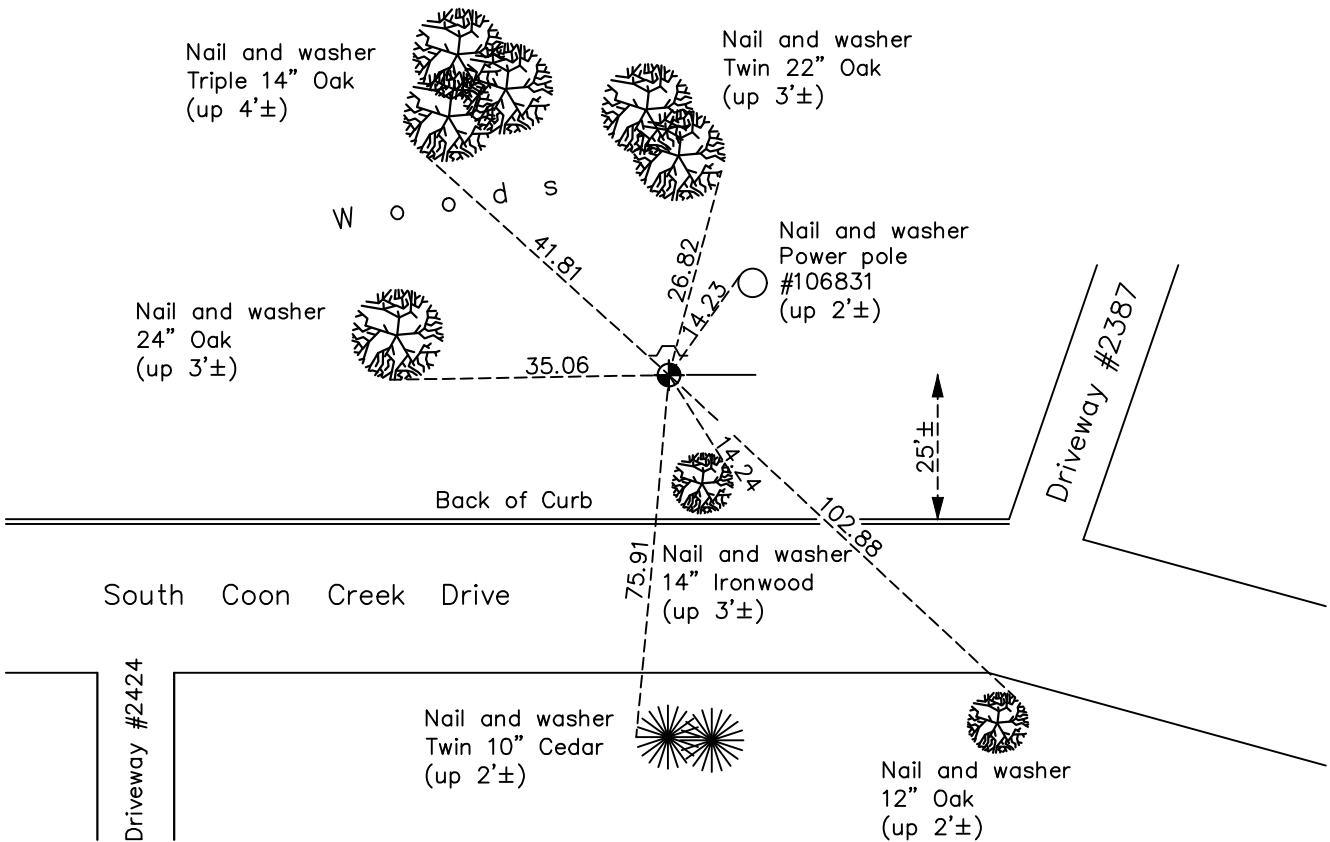
West 1/4 Corner of Sec. 27 Township 32 Range 24

On the 11th day of June, 1959, the described corner was evidenced by area resurvey

and to perpetuate the location of said corner, at the exact location thereof, a permanent marker was placed consisting of a cast iron monument

AND on the 21st day of October, 2020, said permanent marker was found down 0.6'± and the ties were updated. A sign and post was found on the north side.

Updated reference ties are as shown below.



Revision Date

02/11/2021

N.A.D. 1983 Coordinates
(1996 Adjustment)

County Project Coordinates	
Northing	172502.7433
Easting	484562.0913
Date	10/24/00

I hereby certify that this United States public land survey monument record is correct and complete to the best of my knowledge and belief.

David M Zieglsmeier Date 7/30/21

David M. Zieglsmeier, Anoka County Surveyor
Minnesota License Number 46179

HISTORY OF GOVERNMENT CORNER

County of Anoka

State of Minnesota

West 1/4 Corner of Sec. 27 Township 32 Range 24

CORNER HISTORY:

June 11, 1959 – Replaced found iron pipe with a cast iron monument. Established ties to monument.

August 20, 1964 – Found cast iron monument and updated ties.

July 26, 1968 – Found cast iron monument up 0.2'± and updated ties.

July 11, 1972 – Found cast iron monument and updated ties.

June 9, 1976 – Found cast iron monument and updated ties.

June 8, 1979 – Found cast iron monument and updated ties.

June 29, 1982 – Found cast iron monument and updated ties.

June 6, 1985 – Found cast iron monument and updated ties.

August 5, 1988 – Found cast iron monument down 0.7'± and updated ties.

July 20, 1993 – Found cast iron monument and updated ties.

October 24, 2000 – Found cast iron monument and established NAD 1983 (1996 Adjustment) Anoka County Project Coordinates by Static GPS methods.

November 3, 2010 – Found cast iron monument down 0.6'±. A sign and post was set on the north side and ties were updated.

April 8, 2016 – Found cast iron monument down 0.6'±. A sign and post was found on the north side and ties were updated.

October 21, 2020 – Found cast iron monument down 0.6'±. A sign and post was found on the north side and ties were updated.