

# CERTIFICATE OF LOCATION OF GOVERNMENT CORNER

County of Anoka

State of Minnesota

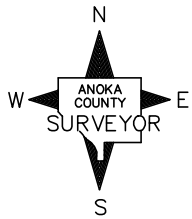
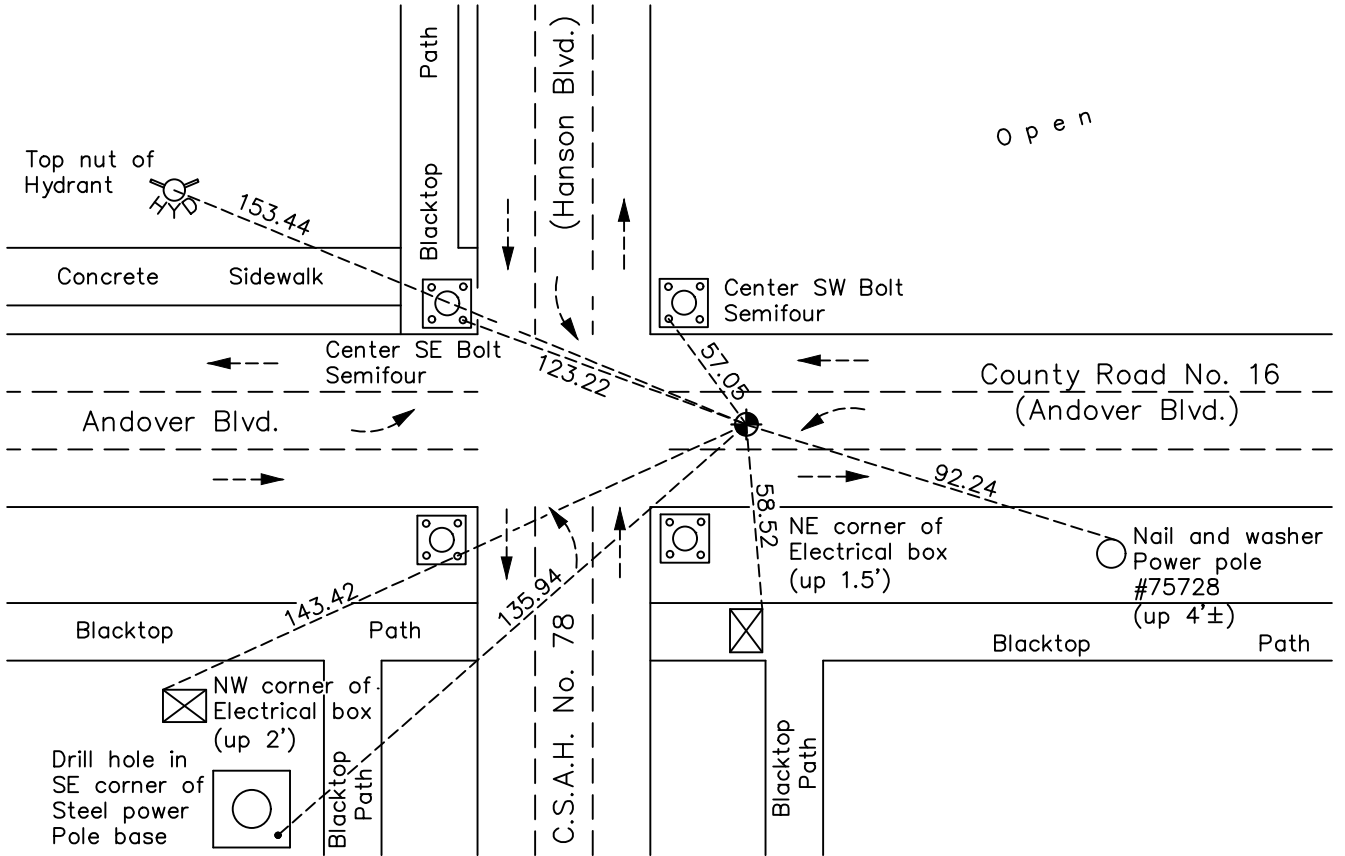
## East 1/4 Corner of Sec. 27 Township 32 Range 24

On the 11th day of June, 1959, the described corner was evidenced by a 3/4" iron pipe

and to perpetuate the location of said corner, at the exact location thereof, a permanent marker was placed consisting of a cast iron monument

AND on the 8th day of June, 2020, said permanent marker was reset with a CIM after road construction, set flush to surface, using static GPS methods and the ties were updated.

Updated reference ties are as shown below.



N.A.D. 1983 Coordinates  
(1996 Adjustment)

County Project Coordinates	
Northing	<u>172361.4691</u>
Easting	<u>489826.0775</u>
Date	<u>6/30/00</u>

Revision Date  
02/11/2021

I hereby certify that this United States public land survey monument record is correct and complete to the best of my knowledge and belief.  
*David M Zieglsmeier* Date 7/30/21  
 David M. Zieglsmeier, Anoka County Surveyor  
 Minnesota License Number 46179

# HISTORY OF GOVERNMENT CORNER

Page No. 97

County of Anoka

State of Minnesota

## East 1/4 Corner of Sec. 27 Township 32 Range 24

### **CORNER HISTORY:**

June 11, 1959 – Found 3/4" iron pipe flush with the blacktop. Established ties to monument.

August 17, 1964 – Found 3/4" iron pipe down 0.1'± and updated ties.

July 26, 1968 – Replaced 3/4" iron pipe with a cast iron monument set flush with the surface. Set P.K. nails 2.00' north and east and updated ties.

August 21, 1973 – Found cast iron monument and raised it to the surface. Updated ties.

June 9, 1976 – Found cast iron monument and updated ties.

June 6, 1979 – Found cast iron monument and updated ties.

June 25, 1982 – Found cast iron monument and updated ties.

August 10, 1982 – Set cast iron monument flush with surface after road construction using construction ties. Updated ties.

May 31, 1985 – Replaced broken cast iron monument with a new cast iron monument set flush with the bituminous. Updated ties.

July 19, 1993 – Found cast iron monument and updated ties.

October 4, 1995 – Found cast iron monument and updated ties.

June 30, 2000 – Found cast iron monument and established NAD 1983 (1996 Adjustment) Anoka County Project Coordinates by Static GPS methods. Updated ties.

October 20, 2010 – Found cast iron monument down 0.1'± and updated ties.

July 27, 2016 – Found cast iron monument down 0.1'± and updated ties.

June 8, 2020 – Reset with a short CIM after Road Construction, set flush to surface, using static GPS methods. Ties Updated June 9, 2020.