

CERTIFICATE OF LOCATION OF GOVERNMENT CORNER

County of Anoka

State of Minnesota

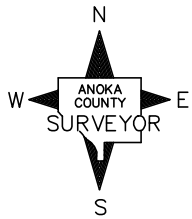
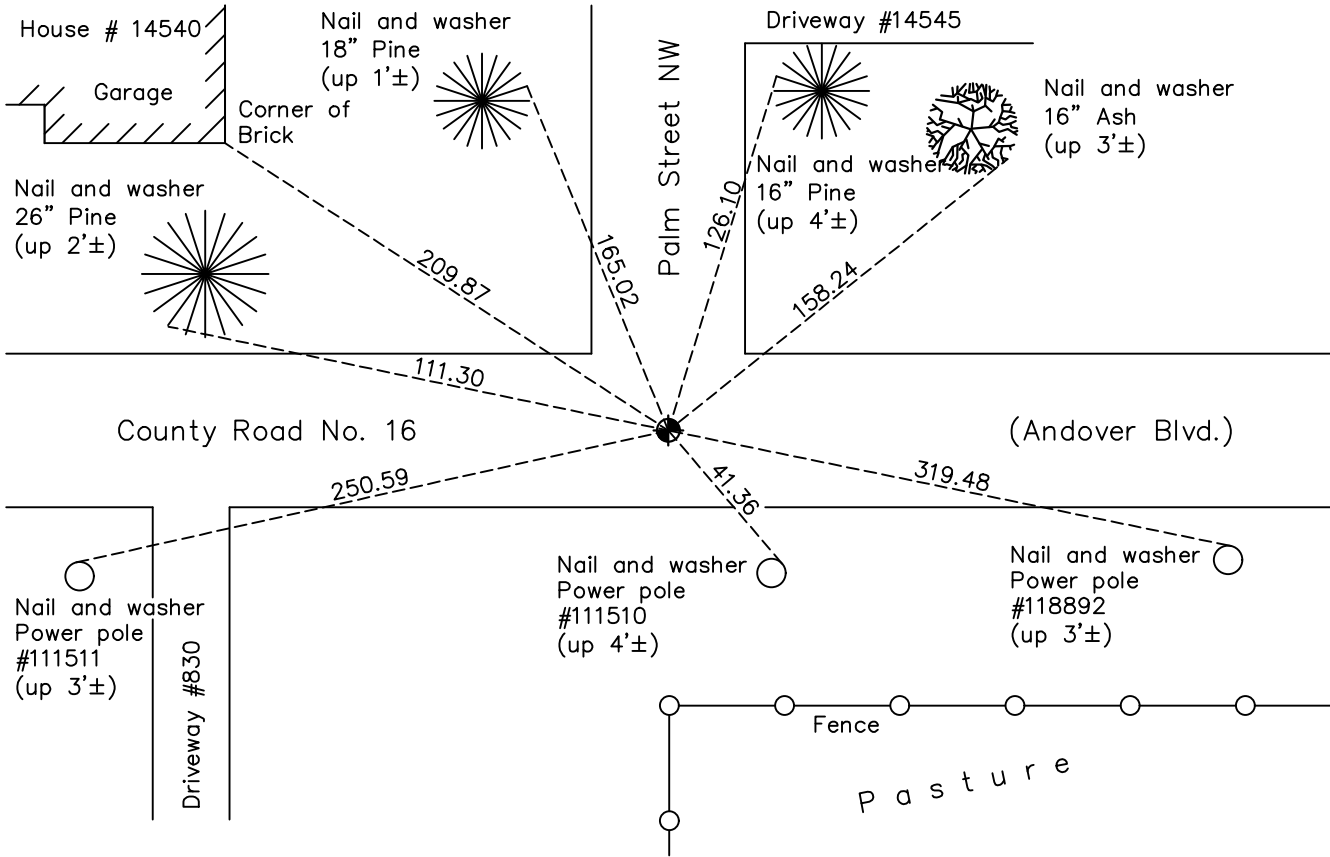
East 1/4 Corner of Sec. 26 Township 32 Range 24

On the 4th day of January, 1962, the described corner was evidenced by a 1/2" iron pipe

and to perpetuate the location of said corner, at the exact location thereof, a permanent marker was placed consisting of a cast iron monument

AND on the 21st day of October, 2020, said permanent marker was found flush with the surface and ties were updated

Updated reference ties are as shown below.



Revision Date
02/12/21

N.A.D. 1983 Coordinates
 (1996 Adjustment)

County Project Coordinates	
Northing	<u>172252.3378</u>
Easting	<u>495127.6276</u>
Date	<u>10/02/00</u>

I hereby certify that this United States public land survey monument record is correct and complete to the best of my knowledge and belief.
David M Zieglermeier Date 7/30/21
David M. Zieglermeier, Anoka County Surveyor
 Minnesota License Number 46179

HISTORY OF GOVERNMENT CORNER

County of Anoka

State of Minnesota

East 1/4 Corner of Sec. 26 Township 32 Range 24

CORNER HISTORY:

January 4, 1962 – Found 1/2” iron pipe set by N.C. Hoium near centerline of Andover Blvd. Established ties to iron pipe.

August 17, 1964 – Found 1/2” iron pipe flush with the surface and updated ties.

July 15, 1968 – Found 1/2” iron pipe and updated ties.

September 9, 1968 – Replaced 1/2 ” iron pipe with a cast iron monument set flush with the surface. Set P.K. nails 2.00’ north and east of monument and updated ties.

July 6, 1972 – Found cast iron monument and updated ties.

August 21, 1973 – Added spacer/s and replaced top of cast iron monument. Monument is flush with surface. Updated ties.

June 9, 1976 – Found cast iron monument and updated ties.

June 7, 1979 – Found cast iron monument and updated ties.

June 30, 1982 – Found cast iron monument and updated ties.

June 4, 1985 – Found cast iron monument and updated ties.

August 2, 1988 – Found cast iron monument and updated ties.

July 19, 1993 – Found cast iron monument and updated ties.

October 2, 2000 – Found cast iron monument and established NAD 1983 (1996 Adjustment) Anoka County Project Coordinates by Static GPS methods. Updated ties.

October 20, 2010 – Found cast iron monument flush with the surface and updated ties.

May 24, 2012 – Loosened top of cast iron monument prior to overlaying road surface.

June 2012 – Added spacer/s and replaced top of cast iron monument. Monument is flush with surface. Updated ties.

March 2, 2016 – Found cast iron monument flush with the surface and updated ties.

October 21, 2020 – Found cast iron monument flush with the surface and updated ties.