

# CERTIFICATE OF LOCATION OF GOVERNMENT CORNER

County of Anoka

State of Minnesota

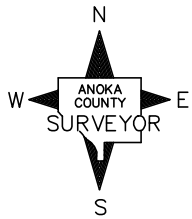
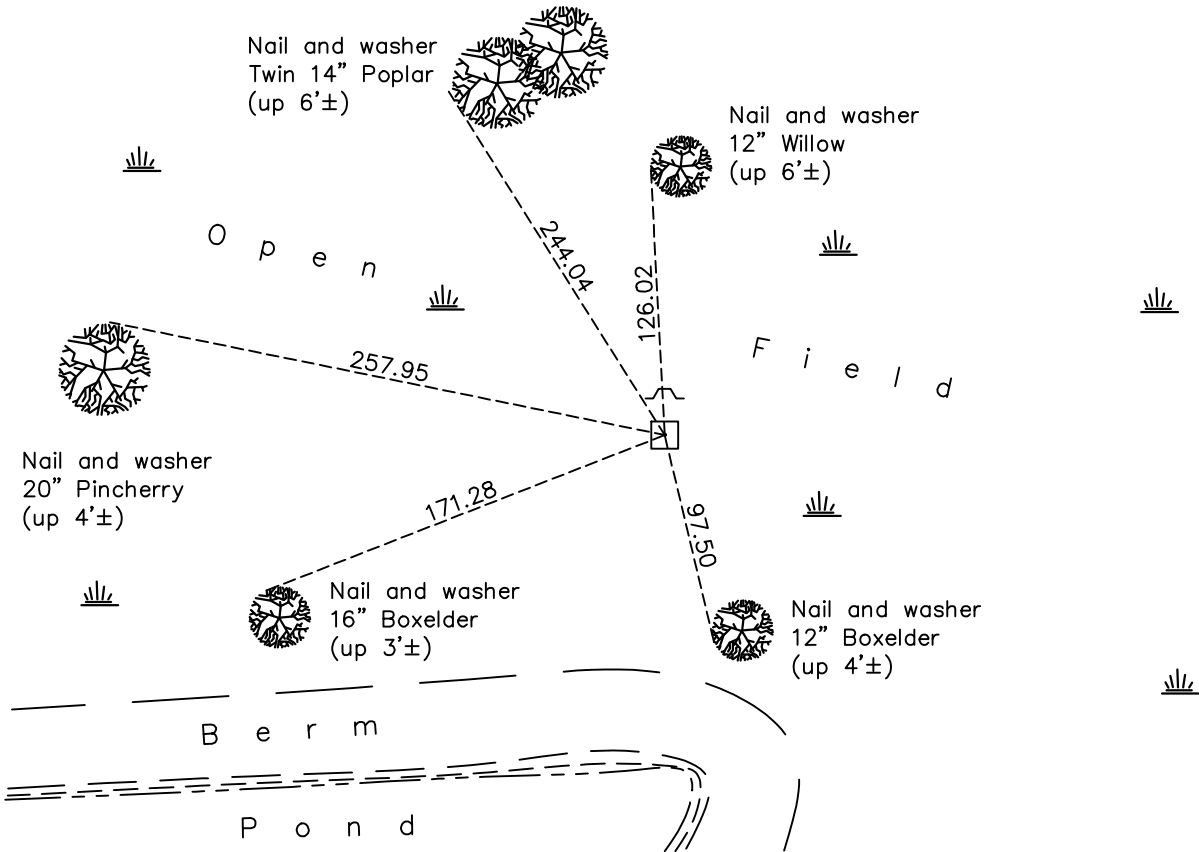
## North 1/4 Corner of Sec. 36 Township 32 Range 24

On the 15th day of February, 1968, the described corner was evidenced by a granite monument

and to perpetuate the location of said corner, at the exact location thereof, a permanent marker was placed consisting of the same granite monument with a sign and post on the north side

AND on the 21st day of October, 2020, said permanent marker was found leaning south and up 0.2'±. The ties were updated

Updated reference ties are as shown below.



Revision Date  
02/12/21

N.A.D. 1983 Coordinates  
 (1996 Adjustment)

County Project Coordinates	
Northing	<u>169610.8210</u>
Easting	<u>497682.2009</u>
Date	<u>11/30/00</u>

I hereby certify that this United States public land survey monument record is correct and complete to the best of my knowledge and belief.  
*David M. Zieglermeier* Date 7/30/21  
David M. Zieglermeier, Anoka County Surveyor  
 Minnesota License Number 46179

# HISTORY OF GOVERNMENT CORNER

County of Anoka

State of Minnesota

## North 1/4 Corner of Sec. 36 Township 32 Range 24

### **CORNER HISTORY:**

February 15, 1968 – Found granite monument up 0.4'±. Established ties to monument.

July 23, 1968 – Found granite monument and updated ties.

July 10, 1972 – Found granite monument and updated ties.

June 9, 1976 – Found granite monument and updated ties.

June 13, 1979 – Found granite monument and updated ties.

June 30, 1982 – Found granite monument and updated ties.

August 31, 1988 – Reset disturbed granite monument and verified location using area resurvey. Set sign and post 1' north of monument and updated ties.

April 15, 1997 – Found granite monument with sign and post on north side and updated ties.

November 30, 2000 – Found granite monument and established NAD 1983 (1996 Adjustment) Anoka County Project Coordinates by Static GPS methods. Updated ties.

December 7, 2010 – Found granite monument leaning south and up 0.2'± with sign and post on north side. Updated ties.

July 28, 2016 – Found granite monument leaning south and up 0.2'± with sign and post on north side. Updated ties.

October 21, 2020 – Found granite monument leaning south and up 0.2'± with sign and post on north side. Updated ties.