

# CERTIFICATE OF LOCATION OF GOVERNMENT CORNER

County of Anoka

State of Minnesota

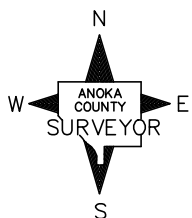
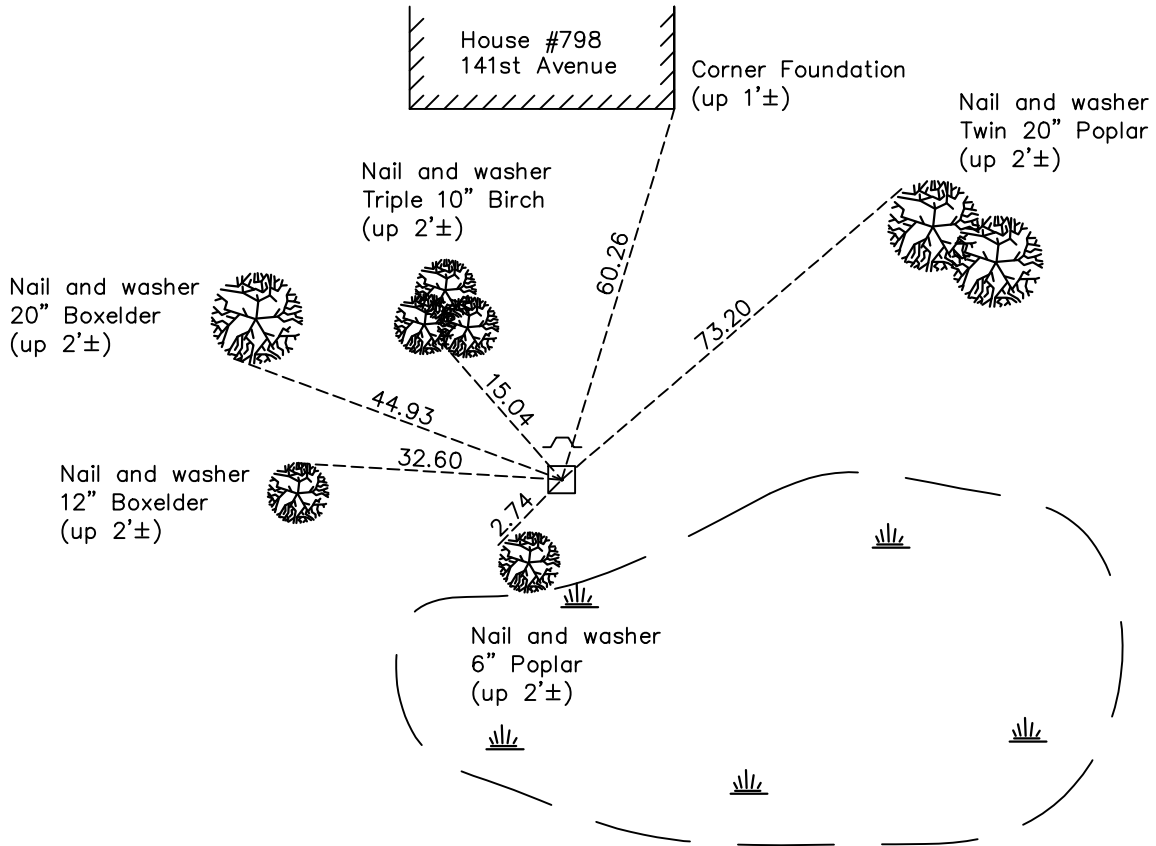
## Northeast Corner of Sec. 35 Township 32 Range 24

On the 10th day of May, 1960, the described corner was evidenced by a granite monument

and to perpetuate the location of said corner, at the exact location thereof, a permanent marker was placed consisting of the same granite monument with a sign and post on the north side

AND on the 16th day of November, 2020, said permanent marker was found flush to surface, 12'± south of the edge of sod and the ties were updated.

Updated reference ties are as shown below.



Revision Date  
02/12/21

N.A.D. 1983 Coordinates  
(1996 Adjustment)

County Project Coordinates	
Northing	<u>169608.4863</u>
Easting	<u>495080.4105</u>
Date	<u>11/27/00</u>

I hereby certify that this United States public land survey monument record is correct and complete to the best of my knowledge and belief.

*David M Zieglmeier* Date 7/30/21

David M. Zieglmeier, Anoka County Surveyor  
Minnesota License Number 46179

# HISTORY OF GOVERNMENT CORNER

Page No. 100

County of Anoka

State of Minnesota

## Northeast Corner of Sec. 35 Township 32 Range 24

### **CORNER HISTORY:**

May 10, 1960 – Found granite monument leaning  $1'\pm$  east. Straightened granite monument and lowered it enough to set a cast iron monument on top of it. Cast iron monument was set up  $0.3'\pm$  above the surface. Established ties to monument.

August 26, 1964 – Found cast iron monument and updated ties.

July 23, 1968 – Found cast iron monument and updated ties.

July 10, 1972 – Found cast iron monument and updated ties.

June 9, 1976 – Found cast iron monument and updated ties.

June 13, 1979 – Found cast iron monument and updated ties.

July 7, 1982 – Found cast iron monument and updated ties.

August 5, 1988 – Found cast iron monument and updated ties.

April 30, 1993 – Removed cast iron monument and updated ties to granite monument. Set sign and post on north side of monument.

November 27, 2000 – Found granite monument and established NAD 1983 (1996 Adjustment) Anoka County Project Coordinates by Static GPS methods. Updated ties.

January 31, 2011 – Found granite monument with sign and post on north side and updated ties.

July 6, 2016 – Found granite monument  $12'\pm$  south of the edge of the sod with sign and post on north side and updated ties.

November 16, 2020 – Found granite monument  $12'\pm$  south of the edge of the sod with sign and post on north side and updated ties.