

CERTIFICATE OF LOCATION OF GOVERNMENT CORNER

County of Anoka

State of Minnesota

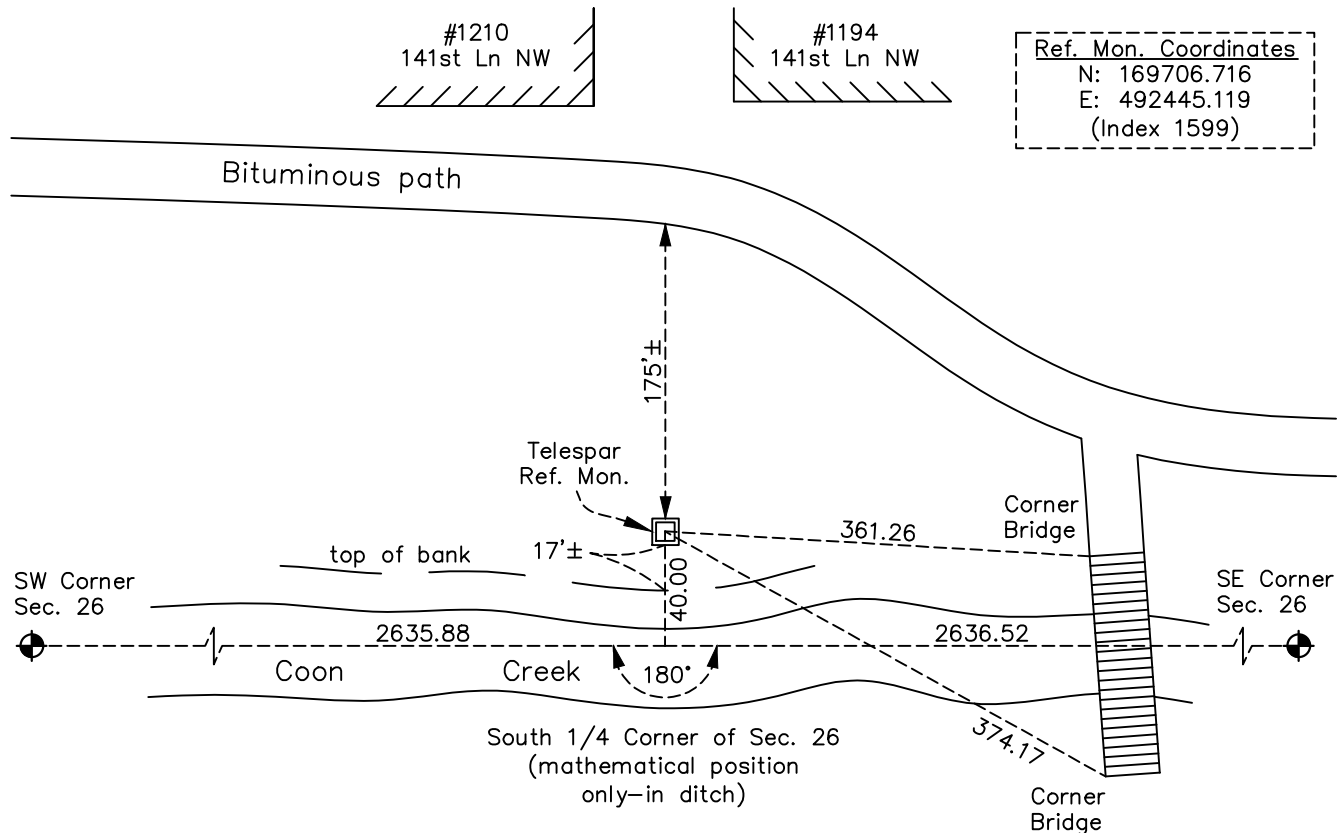
South 1/4 Corner of Sec. 26 Township 32 Range 24

On the 4th day of April, 2023, the described corner was evidenced by area resurvey

and to perpetuate the location of said corner, at the exact location thereof, a permanent marker was placed consisting of a mathematical position. The corner could not be set because the position falls in a ditch.

AND on the 10th day of April, 2023, said permanent marker was set a 2"x2"x6' Telspar Witness Corner w/cap up 1'± 40.00' North of the S1/4 Cor. Sec. 26 using RTK GPS methods.

Updated reference ties are as shown below.



Revision Date
4/03/23

N.A.D. 1983 Coordinates
(1996 Adjustment)

| | |
|----------------------------|-------------------|
| County Project Coordinates | |
| Northing | 169666.710 |
| Easting | 492444.855 |
| Date | COMPUTED POSITION |

I hereby certify that this United States public land survey monument record is correct and complete to the best of my knowledge and belief.

David Zieglermeier Date 6/26/23

David M. Zieglermeier, Anoka County Surveyor
Minnesota License Number 46179

HISTORY OF GOVERNMENT CORNER

Page No. 101

County of Anoka

State of Minnesota

South 1/4 Corner of Sec. 26 Township 32 Range 24

CORNER HISTORY:

May 1855 - This corner was established by James M. Marsh, Deputy Surveyor. Marsh marked the position by "set post at quarter section corner" with two bearing trees as accessories.

February 7, 1963 - Found steel fence post set by N.C. Hoium. Replaced with 1" X 9' iron pipe up 3.5'± above water with 6" red and white painted bands.

July 18, 1972 - Found 1" iron pipe and updated ties.

November 9, 1973 - Unable to access monument due to water.

January 19, 1978 - Found 1" iron pipe missing. Creek had been dredged.

June 14, 1978 - Reset position of corner with 1-1/2" iron pipe up 1.5'± in center of Coon Creek using area resurvey and established ties to monument. Position set on line between SW Cor (2636.03 ft) and SE Cor (2636.67 ft) I-file #143.

June 14, 1979 - Found 1-1/2" iron pipe and updated ties.

August 1986 - Section breakdown per I file #143 monument missing due to position in Coon Creek. position only computed (2636.03 ft to SE cor, 2636.67 ft to SW cor)

April 1987 - Plat of HILLS OF BUNKER LAKE (N $\frac{1}{2}$ Sec 35) shows corner 1247.66 feet west of westerly right of way Burlington Northern Railroad.

October 24, 1988 - Found 1-1/2" iron pipe missing. Unable to reset monument in corner position because of ditch. Position determined mathematically only.

August 1991- Plat of CREEK VIEW CROSSING (SW $\frac{1}{4}$ Sec 26) shows Section Corner 277.71 ft south of SE corner of Park 2.

June 1992 - Plat of WEYBRIDGE SECOND ADDITION (SE $\frac{1}{4}$ Sec 26) shows Section Corner 277.77 ft south of SW corner of Lot 4, Block 2.

April 11, 2016 - Proportionally adjusted distances using GPS locations of southwest corner and southeast corner of Section 26. Position determined mathematically only. (2635.88 ft to SW cor, 2636.52 ft to SE cor)

April 4, 2023 - Location falls in Coon Creek. Set a 2"x2"x6' Telespar reference monument w/punchmarked cap (up 1'±) 40.00 feet north along North-South Quarter line using RTK GPS methods. Established ties to reference monument position. Additional information available in Job 23-125.