

CERTIFICATE OF LOCATION OF GOVERNMENT CORNER

County of Anoka

State of Minnesota

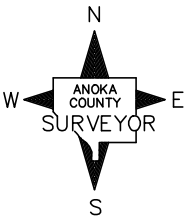
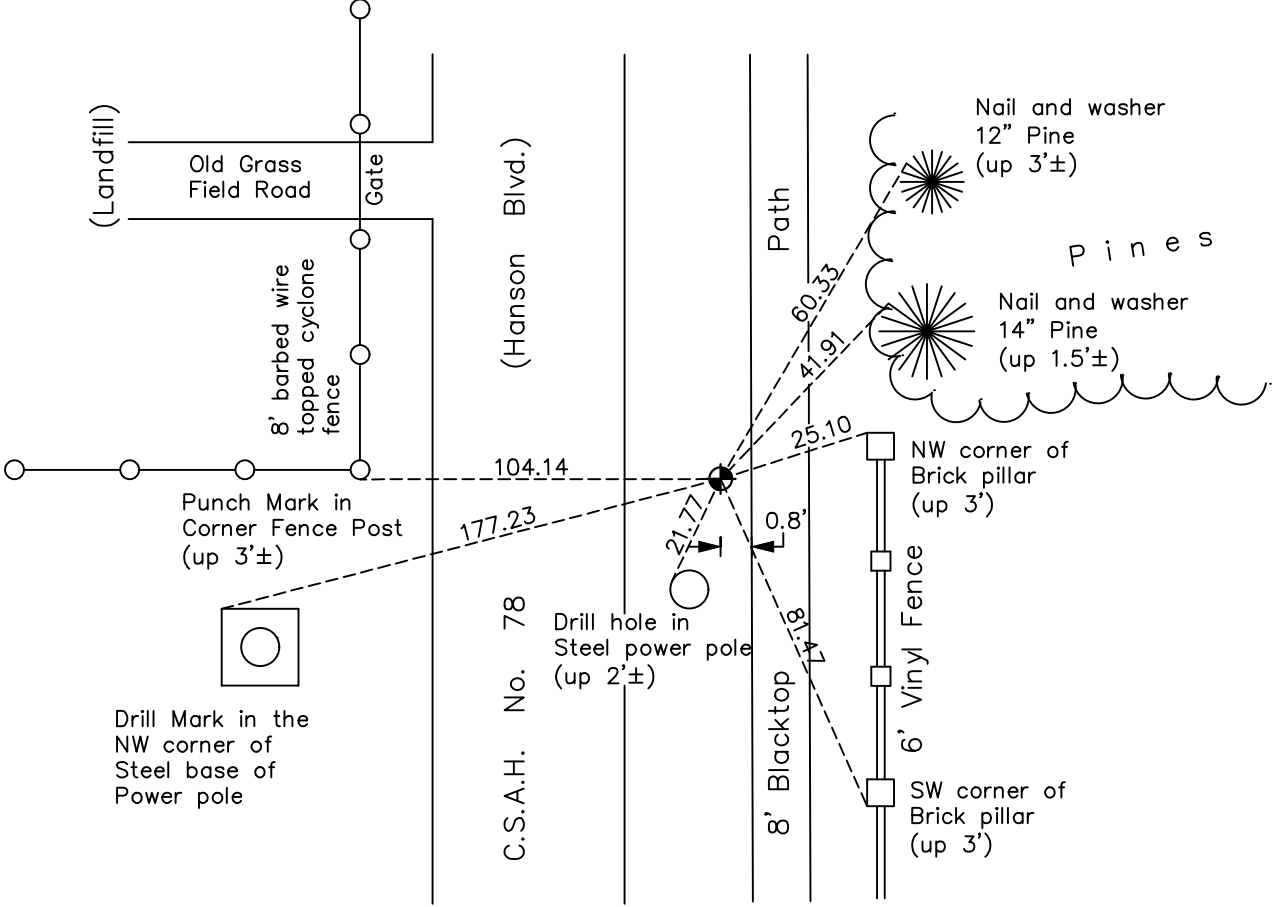
Southeast Corner of Sec. 27 Township 32 Range 24

On the 8th day of August, 1960, the described corner was evidenced by a 1/2" iron pipe

and to perpetuate the location of said corner, at the exact location thereof, a permanent marker was placed consisting of a cast iron monument

AND on the 3rd day of June, 2020, said permanent marker was reset with a CIM after road construction using static GPS methods, set 0.2' down and the ties were updated.

Updated reference ties are as shown below.



Revision Date
 02/12/21

N.A.D. 1983 Coordinates
 (1996 Adjustment)

County Project Coordinates	
Northing	169724.9197
Easting	489809.3004
Date	6/30/00

I hereby certify that this United States public land survey monument record is correct and complete to the best of my knowledge and belief.
David M Zieglsmeier Date 8/2/21
 David M. Zieglsmeier, Anoka County Surveyor
 Minnesota License Number 46179

HISTORY OF GOVERNMENT CORNER

Page No. 102

County of Anoka

State of Minnesota

Southeast Corner of Sec. 27 Township 32 Range 24

CORNER HISTORY:

August 8, 1960 – Found pinched iron pipe flush with the surface. Established ties to monument.

August 26, 1964 – Found pinched iron pipe and updated ties.

July 23, 1968 – Found pinched iron pipe and updated ties.

July 14, 1972 – Found pinched iron pipe and updated ties.

June 10, 1976 – Found pinched iron pipe and updated ties.

October 8, 1980 – Replaced 1/2" pinched iron pipe with a cast iron monument set flush with the surface. Set sign and post on north side of monument and updated ties.

June 29, 1981 – Found cast iron monument and updated ties.

July 27, 1988 – Found cast iron monument and updated ties.

July 19, 1993 – Found cast iron monument and updated ties.

June 30, 2000 – Found cast iron monument and established NAD 1983 (1996 Adjustment) Anoka County Project Coordinates by Static GPS methods. Updated ties.

October 28, 2010 – Found cast iron monument down 1.5'± and updated ties.

February 29, 2016 – Found cast iron monument down 1.5'± and updated ties.

June 3, 2020 – Reset cast iron monument, set flush to surface, after road construction using static GPS methods. Updated Ties June 9, 2020