

# CERTIFICATE OF LOCATION OF GOVERNMENT CORNER

County of Anoka

State of Minnesota

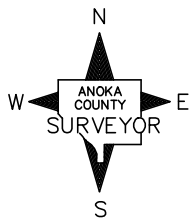
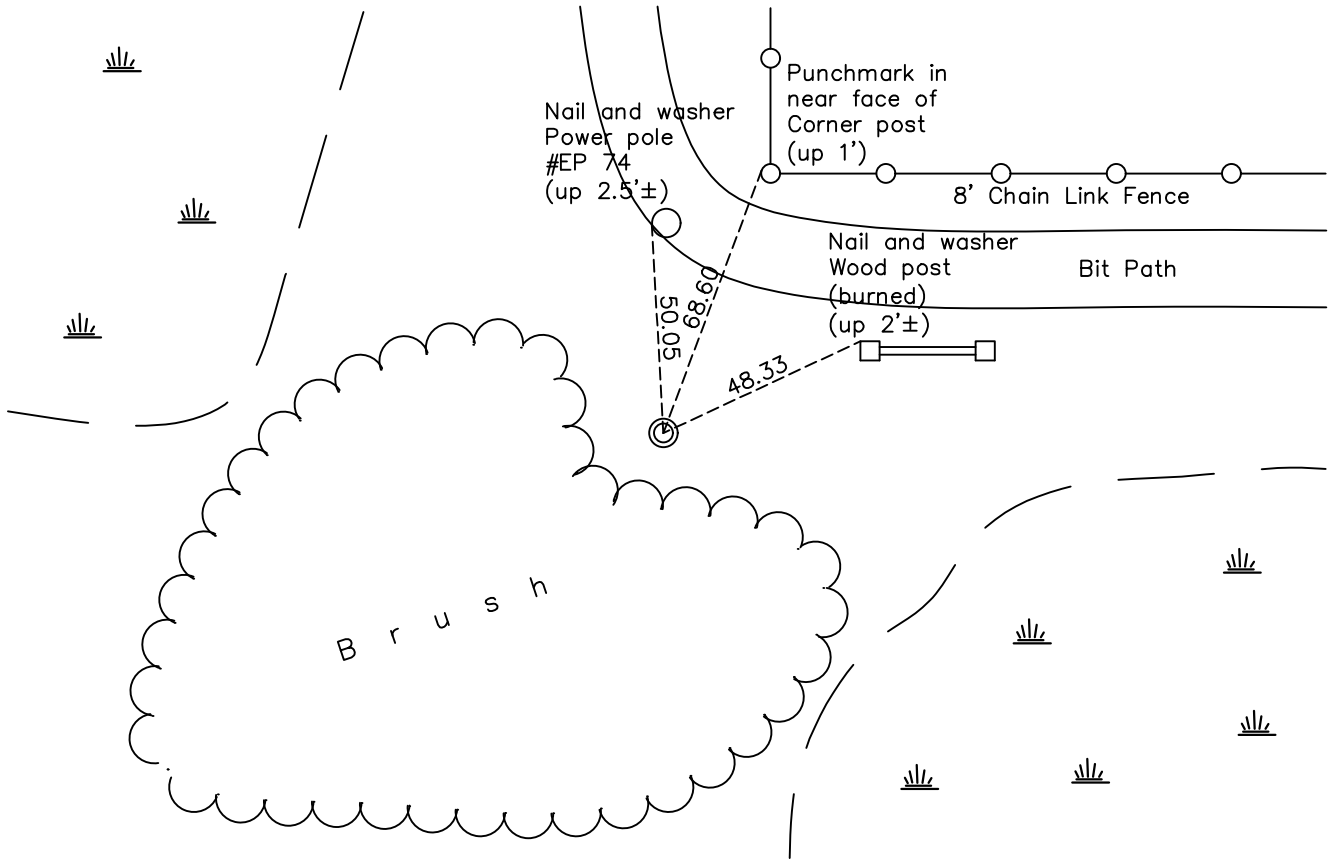
## South 1/4 Corner of Sec. 27 Township 32 Range 24

On the 10th day of August, 1960, the described corner was evidenced by a steel fence post

and to perpetuate the location of said corner, at the exact location thereof, a permanent marker was placed consisting of a red and white iron pipe with a sign attached

AND on the 4th day of January, 2021, said permanent marker was found up 4'± with the sign facing east and the ties were updated

Updated reference ties are as shown below.



Revision Date  
02/12/21

N.A.D. 1983 Coordinates  
(1996 Adjustment)

County Project Coordinates	
Northing	169789.1123
Easting	487176.0634
Date	11/16/2000

I hereby certify that this United States public land survey monument record is correct and complete to the best of my knowledge and belief.  
*David M Zieglmeier* Date 8/2/21  
 David M. Zieglmeier, Anoka County Surveyor  
 Minnesota License Number 46179

# HISTORY OF GOVERNMENT CORNER

Page No. 103

County of Anoka

State of Minnesota

## South 1/4 Corner of Sec. 27 Township 32 Range 24

### **CORNER HISTORY:**

August 10, 1960 – Found steel fence post up  $3.5' \pm$  in swamp. Established ties to monument.

August 26, 1964 – Found steel fence post and updated ties.

July 29, 1968 – Found steel fence post and updated ties.

Date unknown – Found steel fence post and updated ties.

July 19, 1977 – Set red and white iron pipe up  $3' \pm$  using three original transit ties. Attached sign to iron pipe and updated ties to transit ties. Iron pipe matches location of plat to the west.

August 15, 1979 – Found red and white iron pipe up  $3.5' \pm$  and set transit ties to iron pipe. Updated ties to transit ties.

July 6, 1982 – Found red and white iron pipe and updated ties.

August 10, 1988 – Found red and white iron pipe and updated ties.

October 24, 1995 – Replaced red and white iron pipe with a new red and white iron pipe with sign attached. Updated ties.

November 16, 2000 – Found red and white iron pipe and established NAD 1983 (1996 Adjustment) Anoka County Project Coordinates by Static GPS methods. Updated ties.

November 4, 2010 – Found red and white iron pipe with sign attached facing east and updated ties.

July 26, 2016 – Found red and white iron pipe up  $4' \pm$  with sign attached facing east and updated ties.

January 4, 2021 – Found red and white iron pipe up  $4' \pm$  with sign attached facing east and updated ties.