

CERTIFICATE OF LOCATION OF GOVERNMENT CORNER

County of Anoka

State of Minnesota

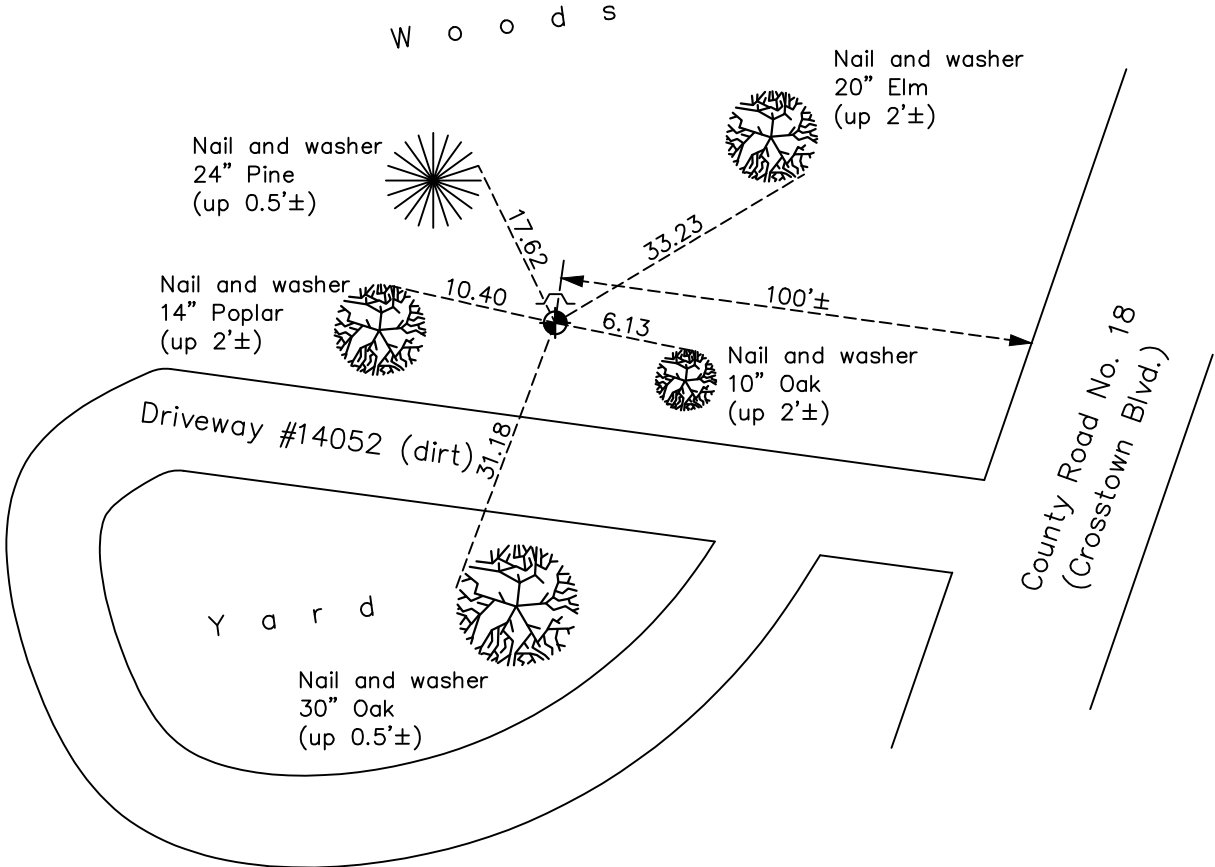
Northeast Corner of Sec. 33 Township 32 Range 24

On the 1st day of August, 1960, the described corner was evidenced by a 1 1/2" iron pipe

and to perpetuate the location of said corner, at the exact location thereof, a permanent marker was placed consisting of a cast iron monument with a sign and post on the north side.

AND on the 13th day of November, 2020, said permanent marker was found flush with the surface with a sign and post on the north side and the ties were updated.

Updated reference ties are as shown below.



Revision Date
02/12/21

N.A.D. 1983 Coordinates
 (1996 Adjustment)

County Project Coordinates	
Northing	<u>169853.6586</u>
Easting	<u>484542.9188</u>
Date	<u>11/16/00</u>

I hereby certify that this United States public land survey monument record is correct and complete to the best of my knowledge and belief.
David M Zieglsmeier Date 8/2/21
David M. Zieglsmeier, Anoka County Surveyor
 Minnesota License Number 46179

HISTORY OF GOVERNMENT CORNER

County of Anoka

State of Minnesota

Northeast Corner of Sec. 33 Township 32 Range 24

CORNER HISTORY:

August 1, 1960 – Found 1–1/2” iron pipe up 1’± and established ties to monument.

August 26, 1964 – Found 1–1/2” iron pipe and updated ties.

July 23, 1968 – Replaced 1–1/2” iron pipe with a cast iron monument set up 0.1’±. Updated ties.

July 10, 1972 – Found cast iron monument and updated ties.

June 10, 1976 – Found cast iron monument and updated ties.

June 12, 1979 – Found cast iron monument and updated ties.

June 29, 1982 – Found cast iron monument and updated ties.

June 6, 1985 – Found cast iron monument and updated ties.

July 29, 1988 – Found cast iron monument and updated ties.

July 22, 1993 – Found cast iron monument and updated ties.

November 16, 2000 – Found cast iron monument and established NAD 1983 (1996 Adjustment) Anoka County Project Coordinates by Static GPS methods. Updated ties.

November 3, 2010 – Found cast iron monument flush with the surface. Set sign and post on north side and updated ties.

July 6, 2016 – Found cast iron monument flush with the surface with a sign and post on north side and updated ties.

November 13, 2020 – Found cast iron monument flush with the surface with a sign and post on north side and updated ties.