

CERTIFICATE OF LOCATION OF GOVERNMENT CORNER

County of Anoka

State of Minnesota

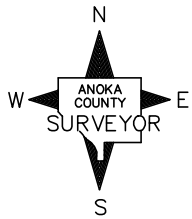
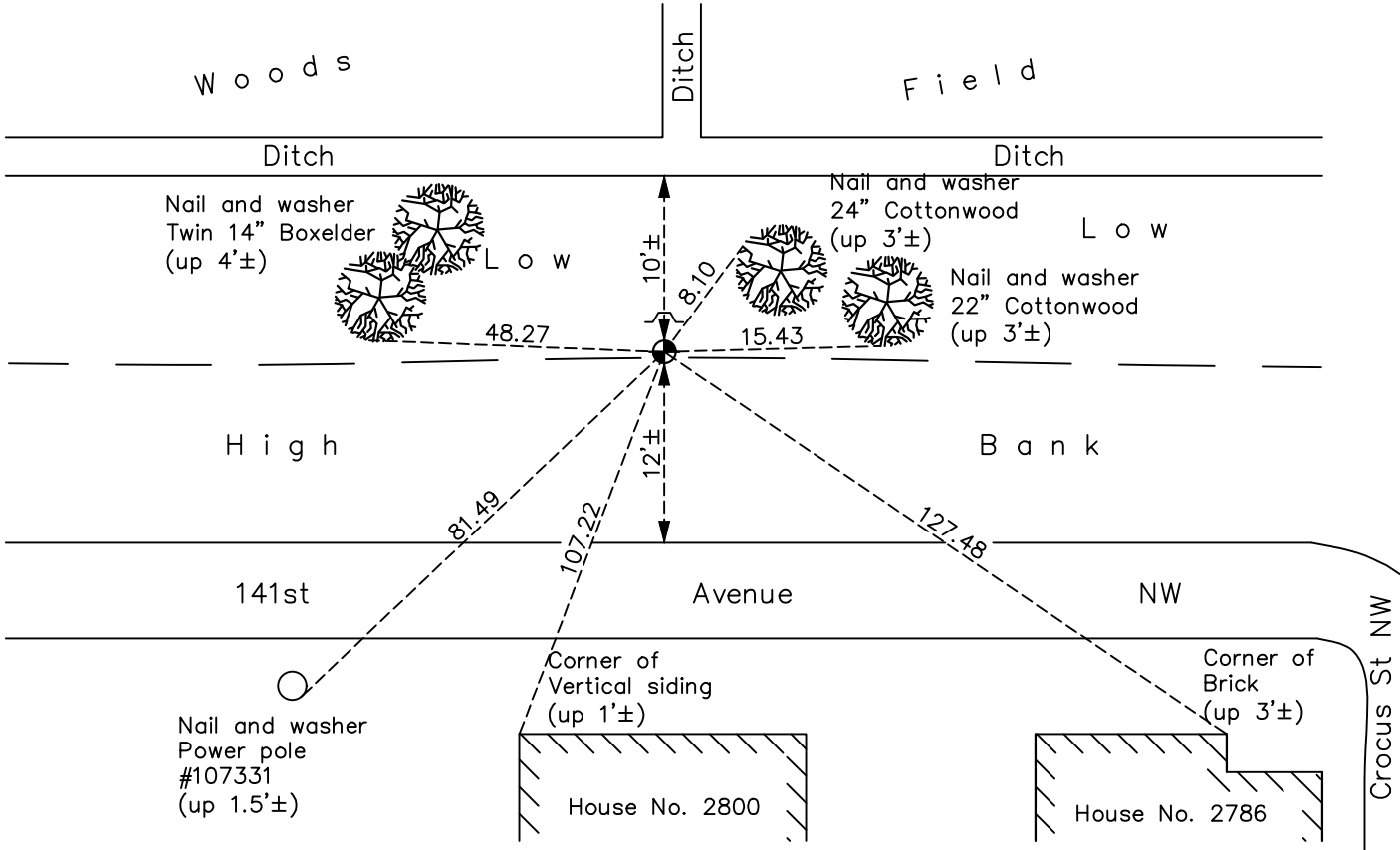
South 1/4 Corner of Sec. 28 Township 32 Range 24

On the 8th day of August, 1960, the described corner was evidenced by a concrete monument

and to perpetuate the location of said corner, at the exact location thereof, a permanent marker was placed consisting of a cast iron monument with a sign and post on the north side

AND on the 30th day of October, 2020, said permanent marker was found down 1.0'± and the ties were updated

Updated reference ties are as shown below.



Revision Date
02/16/21

N.A.D. 1983 Coordinates
 (1996 Adjustment)

County Project Coordinates	
Northing	169829.6040
Easting	481889.3854
Date	11/16/00

I hereby certify that this United States public land survey monument record is correct and complete to the best of my knowledge and belief.
David M Zieglsmeier Date 8/2/21
 David M. Zieglsmeier, Anoka County Surveyor
 Minnesota License Number 46179

HISTORY OF GOVERNMENT CORNER

County of Anoka

State of Minnesota

South 1/4 Corner of Sec. 28 Township 32 Range 24

CORNER HISTORY:

August 8, 1960 – Found concrete monument up 1'± with iron pipe on west side. Established ties to monument.

August 26, 1964 – Found concrete monument and updated ties.

July 26, 1968 – Found concrete monument and updated ties.

July 11, 1972 – Found concrete monument and updated ties.

July 9, 1973 – Replaced broken concrete monument with a cast iron monument. Updated ties.

June 10, 1976 – Found cast iron monument and updated ties.

November 3, 1977 – Found cast iron monument and updated ties. Set sign and post on north side of monument.

June 11, 1979 – Found cast iron monument and updated ties.

June 29, 1982 – Found cast iron monument and updated ties.

June 6, 1985 – Found cast iron monument and updated ties.

July 29, 1988 – Found cast iron monument and updated ties.

July 22, 1993 – Found cast iron monument and updated ties.

November 16, 2000 – Found cast iron monument and established NAD 1983 (1996 Adjustment) Anoka County Project Coordinates by Static GPS methods. Updated ties.

October 2010 – Found cast iron monument down 1'± with sign and post on north side and updated ties.

March 7, 2016 – Found cast iron monument down 1'± with sign and post on north side and updated ties.

October 30, 2020 – Found cast iron monument down 1'± with sign and post on north side and updated ties.