

# CERTIFICATE OF LOCATION OF GOVERNMENT CORNER

County of Anoka

State of Minnesota

## Witness Corner of Sec. 28 Township 32 Range 24

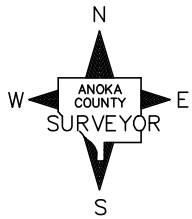
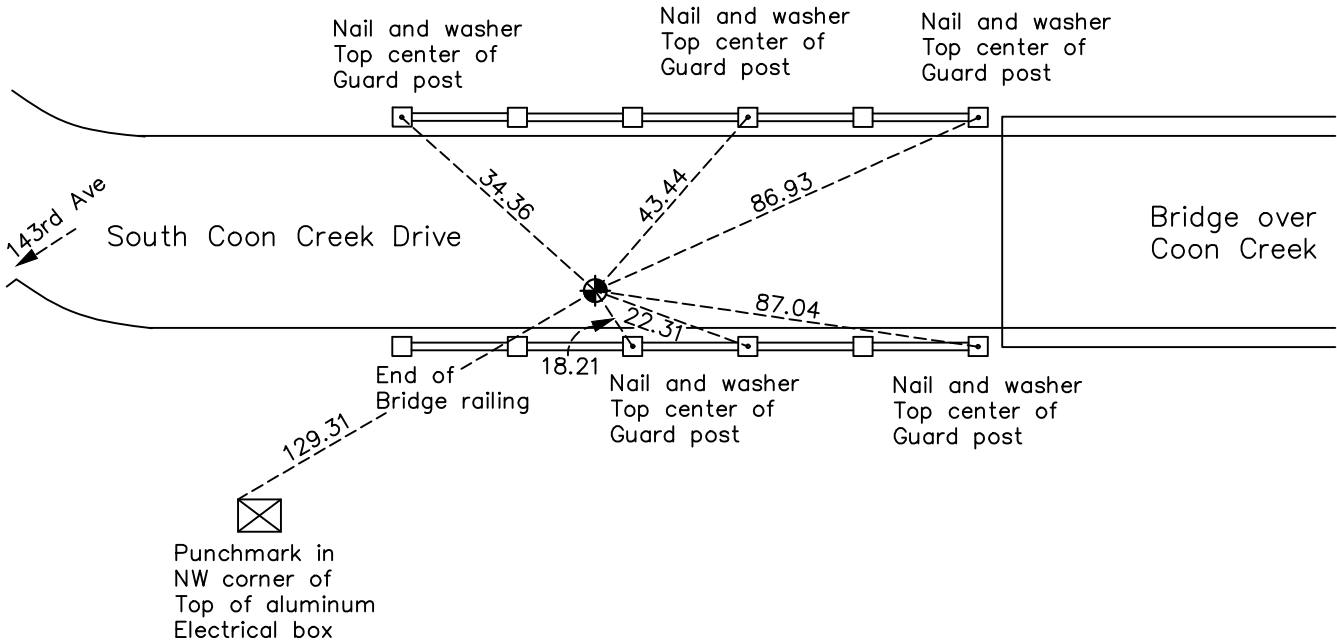
(on west line of SW 1/4)

On the 10th day of July, 1990, the described corner was evidenced by area resurvey

and to perpetuate the location of said corner, at the exact location thereof, a permanent marker was placed consisting of a cast iron monument

AND on the 21st day of October, 2020, said permanent marker was found flush with the surface 6.5'± South of the Center Line of East bound lane and the ties were updated

Updated reference ties are as shown below.



Revision Date  
 02/16/21

N.A.D. 1983 Coordinates  
 (1996 Adjustment)

County Project Coordinates	
Northing	171267.2179
Easting	479278.1359
Date	10/26/00

I hereby certify that this United States public land survey monument record is correct and complete to the best of my knowledge and belief.  
*David M Zieglmeier* Date 8/2/21  
 David M. Zieglmeier, Anoka County Surveyor  
 Minnesota License Number 46179

# HISTORY OF GOVERNMENT CORNER

Page No. 106A

County of Anoka

State of Minnesota

Witness Corner of Sec. 28 Township 32 Range 24  
(on west line of SW 1/4)

## **CORNER HISTORY:**

July 10, 1990 – Set cast iron monument flush with the surface using area resurvey and established ties to monument.

July 20, 1993 – Found cast iron monument and updated ties.

October 26, 2000– Found cast iron monument and established NAD 1983 (1996 Adjustment) Anoka County Project Coordinates by Static GPS methods. Updated ties.

October 11, 2010 – Found cast iron monument flush with the surface and updated ties.

May 8, 2012 – Set construction ties prior to road construction and updated ties.

November 16, 2012 – Set cast iron monument after road construction using construction ties and verified location of corner by VRS GPS methods. Updated ties.

March 4, 2016 – Found cast iron monument flush with the surface and 1.5'± south of the centerline of east bound lane. Updated ties.

October 21, 2020 – Found cast iron monument flush with the surface and 1.5'± south of the centerline of east bound lane. Updated ties.