

# CERTIFICATE OF LOCATION OF GOVERNMENT CORNER

County of Anoka

State of Minnesota

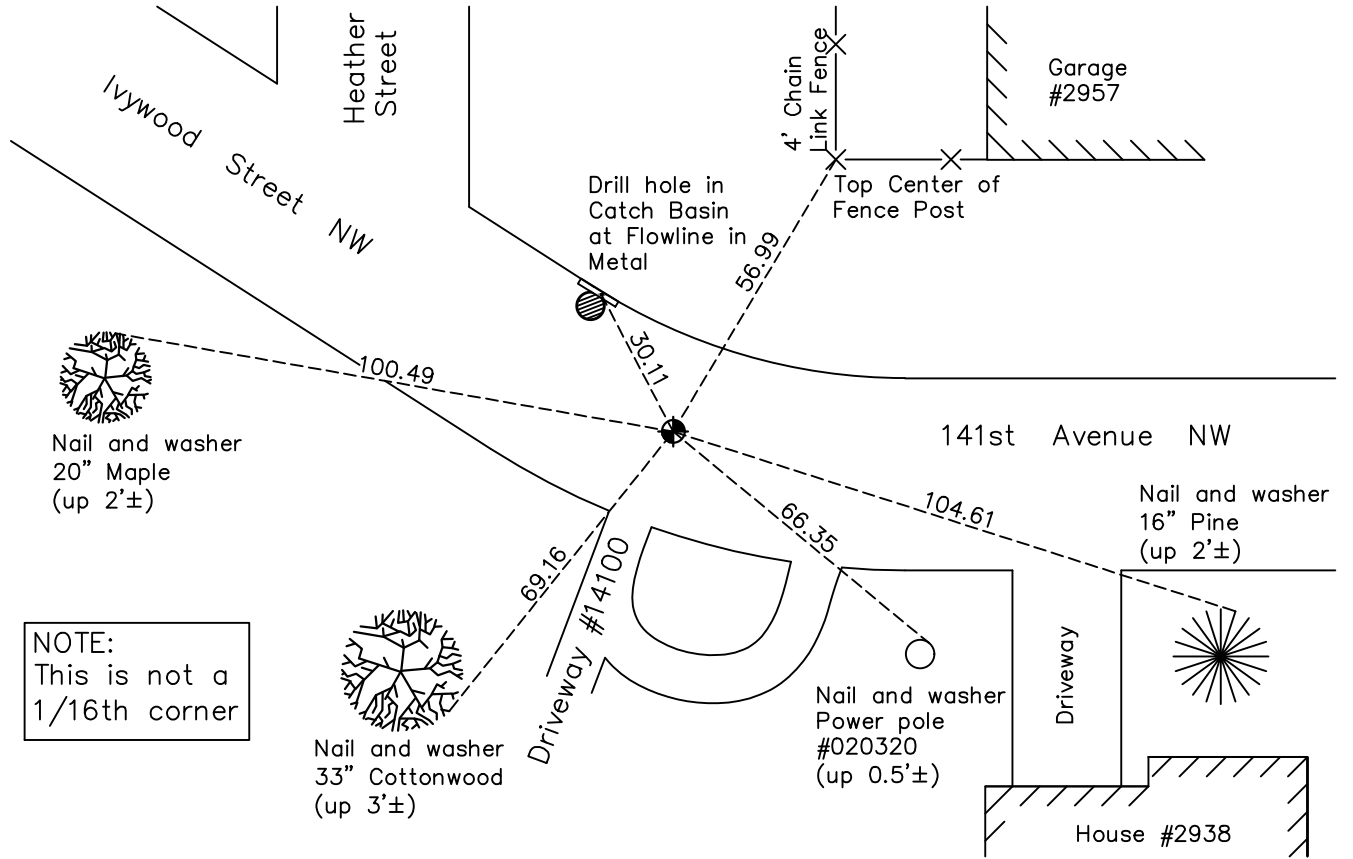
Witness Corner of Sec. 33 Township 32 Range 24  
(on north line of section)

On the 10th day of July, 1990, the described corner was evidenced by area resurvey

and to perpetuate the location of said corner, at the exact location thereof, a permanent marker was placed consisting of a cast iron monument

AND on the 21st day of October, 2020, said permanent marker was found flush with the  
surface and the ties were updated

Updated reference ties are as shown below.



NOTE:  
This is not a  
1/16th corner

N  
W ANOKA COUNTY SURVEYOR E  
S

Revision Date  
**02/16/21**

N.A.D. 1983 Coordinates  
(1996 Adjustment)

County Project Coordinates	
Northing	169819.0819
Easting	480734.0056
Date	10/26/00

I hereby certify that this United States public land survey monument record is correct and complete to the best of my knowledge and belief.

\_\_\_\_\_ Date \_\_\_\_\_

David M. Zieglmeier, Anoka County Surveyor  
Minnesota License Number 46179

# HISTORY OF GOVERNMENT CORNER

Page No. 106C

County of Anoka

State of Minnesota

Witness Corner of Sec. 33 Township 32 Range 24  
(on north line of section)

## **CORNER HISTORY:**

July 10, 1990 – Set cast iron monument flush with the road surface using area resurvey and established ties to monument. This tie is labeled "Caution, this is not a 1/16th corner".

July 22, 1993 – Found cast iron monument and updated ties.

October 26, 2000 – Found cast iron monument and established NAD 1983 (1996 Adjustment) Anoka County Project Coordinates by Static GPS methods. Updated ties.

November 2010 – Found cast iron monument flush with the surface and updated ties.

March 7, 2016– Found cast iron monument flush with the surface and updated ties.

October 21, 2020– Found cast iron monument flush with the surface and updated ties.