

CERTIFICATE OF LOCATION OF GOVERNMENT CORNER

County of Anoka

State of Minnesota

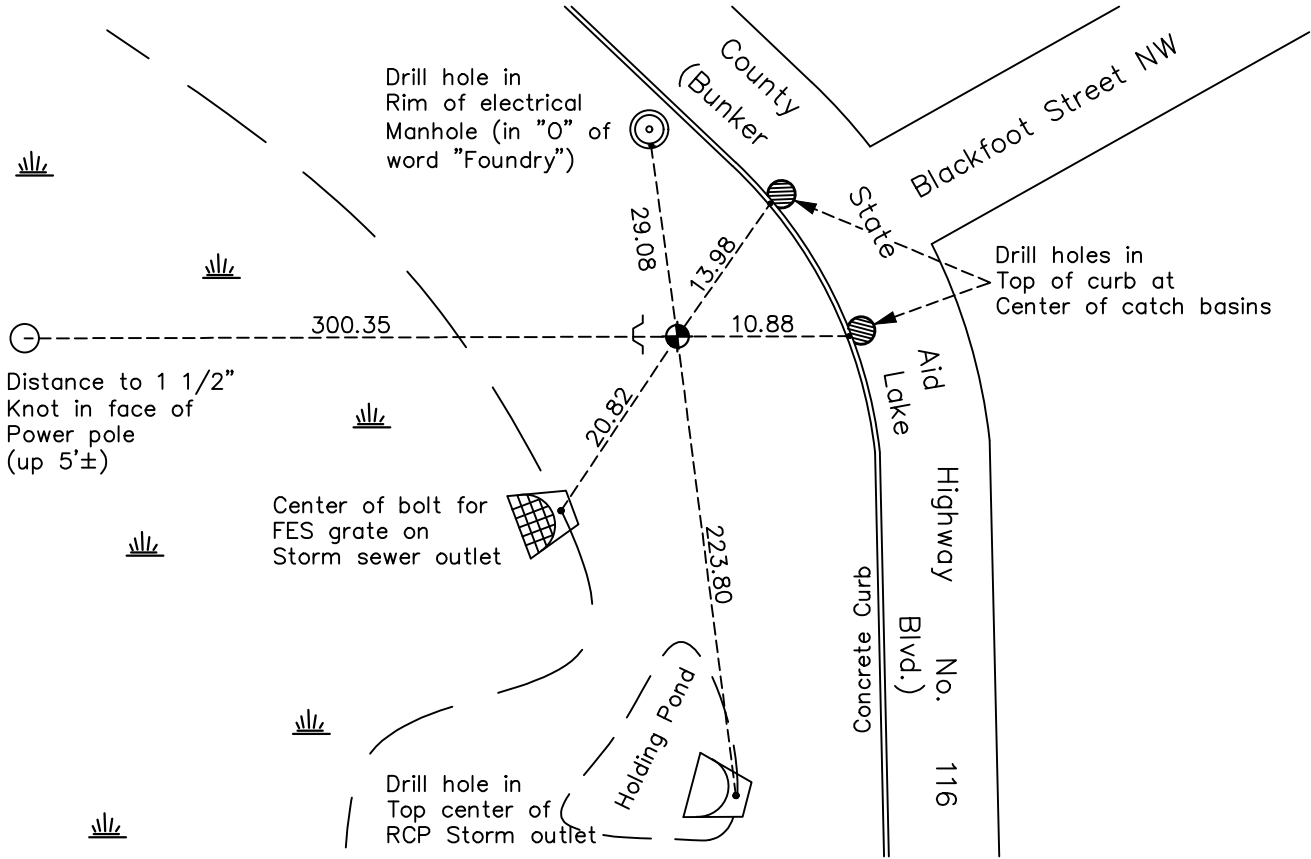
Northeast Corner of Sec. 31 Township 32 Range 24

On the 12th day of January, 1973, the described corner was evidenced by area resurvey

and to perpetuate the location of said corner, at the exact location thereof, a permanent marker was placed consisting of a cast iron monument with a sign and post on the west side

AND on the 30th day of October, 2020, said permanent marker was found flush with the surface and the ties were updated

Updated reference ties are as shown below.



N

 ANOKA COUNTY SURVEYOR
 S

Revision Date
 02/16/21

N.A.D. 1983 Coordinates
(1996 Adjustment)

County Project Coordinates	
Northing	169887.6719
Easting	474002.7794
Date	11/27/00

I hereby certify that this United States public land survey monument record is correct and complete to the best of my knowledge and belief.

David M Zieglsmeier Date 8/2/21

David M. Zieglsmeier, Anoka County Surveyor
 Minnesota License Number 46179

HISTORY OF GOVERNMENT CORNER

County of Anoka

State of Minnesota

Northeast Corner of Sec. 31 Township 32 Range 24

CORNER HISTORY:

May 10, 1949 – H.A. Cartwright found 1” iron pipe on east–west fence line and a fence line to south. Established ties to monument.

May 16, 1956 – Northern Natural Gas Company found 1” iron pipe and updated ties.

February 10, 1960 – Found 1” iron pipe up 0.2’ and updated ties.

January 3, 1973 – N.C. Hoium found 1” iron pipe missing.

January 12, 1973 – Reset corner with a red and white iron pipe set 3.5’ above the surface using in place platting to the south and west. Attached sign to red and white iron pipe.

January 26, 1978 – Found red and white iron pipe up 3’± and updated ties.

June 14, 1979 – Found red and white iron pipe and updated ties.

June 30, 1982 – Found red and white iron pipe and updated ties.

January 24, 1984 – Set construction ties to red and white iron pipe prior to road construction.

September 25, 1987 – Replaced red and white iron pipe with a cast iron monument set flush with the surface and updated ties. Set sign and post on west side of monument.

July 19, 1993 – Found cast iron monument and updated ties.

November 27, 2000 – Found cast iron monument and established NAD 1983 (1996 Adjustment) Anoka County Project Coordinates by Static GPS methods. Updated ties.

December 2010 – Found cast iron monument and updated ties.

April 24, 2013 – Set construction ties and removed cast iron monument prior to road construction. Verified location of monument using VRS GPS methods.

October 29, 2013 – Set solid cast iron monument after road construction using construction ties. Verified location of corner by VRS GPS methods and updated ties. Set sign and post on west side of monument.

March 3, 2016 – Found cast iron monument flush with the surface and updated ties.

October 30, 2020 – Found cast iron monument flush with the surface and updated ties.