

# CERTIFICATE OF LOCATION OF GOVERNMENT CORNER

County of Anoka

State of Minnesota

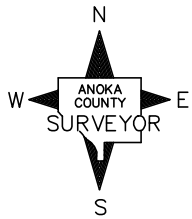
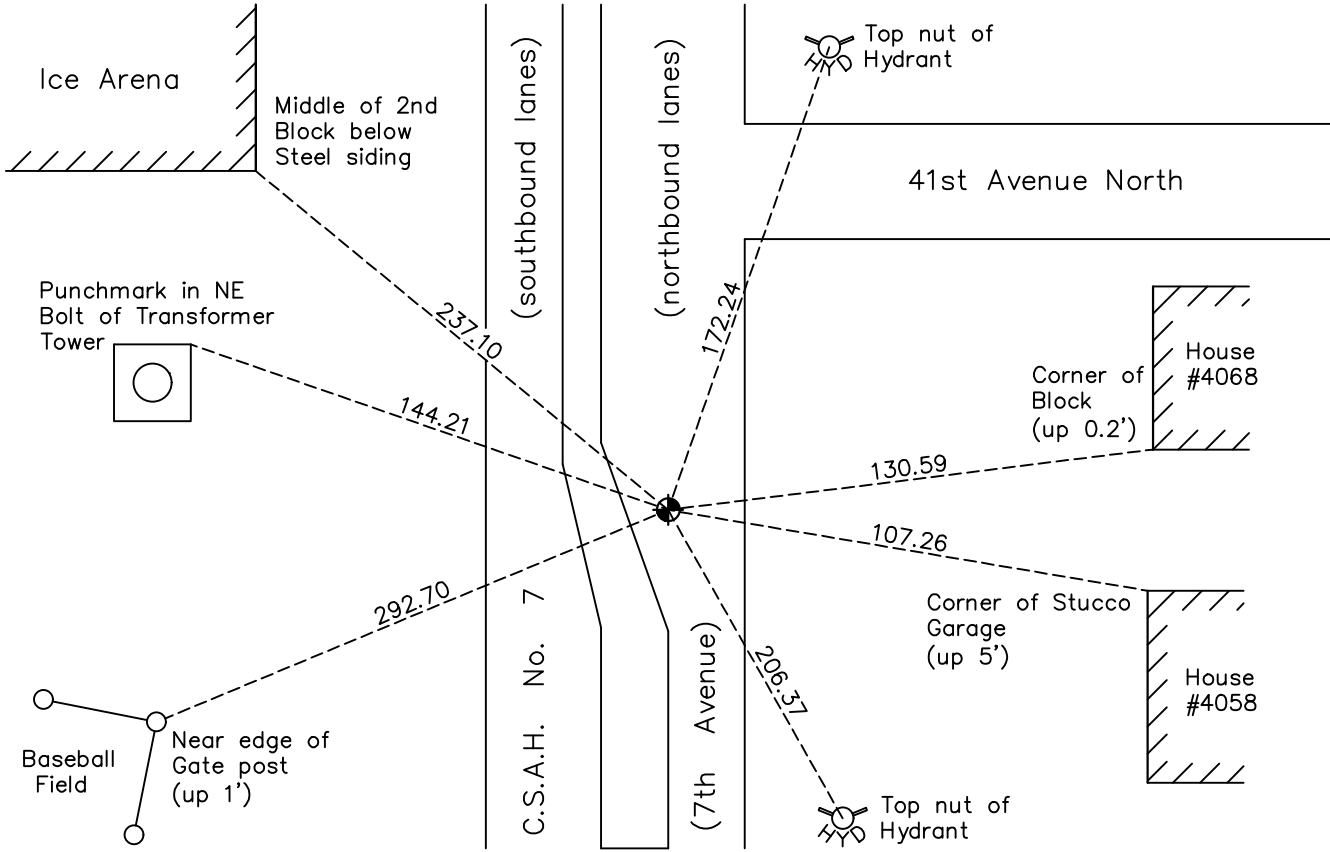
## North 1/4 Corner of Sec. 31 Township 32 Range 24

On the 14th day of September, 1964, the described corner was evidenced by a 1/2" iron pipe

and to perpetuate the location of said corner, at the exact location thereof, a permanent marker was placed consisting of a cast iron monument

AND on the 30th day of October, 2020, said permanent marker was found flush with the surface and the ties were updated

Updated reference ties are as shown below.



Revision Date  
02/16/21

N.A.D. 1983 Coordinates  
(1996 Adjustment)

County Project Coordinates	
Northing	169848.0449
Easting	471365.5489
Date	11/27/00

I hereby certify that this United States public land survey monument record is correct and complete to the best of my knowledge and belief.  
*David M Zieglsmeier* Date 8/2/21  
 David M. Zieglsmeier, Anoka County Surveyor  
 Minnesota License Number 46179

# HISTORY OF GOVERNMENT CORNER

Page No. 109

County of Anoka

State of Minnesota

## North 1/4 Corner of Sec. 31 Township 32 Range 24

### **CORNER HISTORY:**

September 14, 1964 – Found 1/2” pinched iron pipe. Established ties to monument. Roland W. Anderson looked for a granite monument that he believed was gone and could not find it (see field notes).

July 13, 1970 – Replaced 1/2” pinched iron pipe with a cast iron monument set flush with the surface. Updated ties and set P.K. nails 2.00’ north and east of monument.

June 20, 1972 – Found cast iron monument and updated ties.

June 11, 1976 – Raised broken cast iron monument to flush with the surface and updated ties.

June 7, 1979 – Found cast iron monument and updated ties.

June 30, 1982 – Found cast iron monument and updated ties.

July 28, 1988 – Found cast iron monument and updated ties.

July 15, 1993 – Found cast iron monument and updated ties.

November 27, 2000 – Found cast iron monument and established NAD 1983 (1996 Adjustment) Anoka County Project Coordinates by Static GPS methods. Updated ties.

January 14, 2011 – Found cast iron monument and updated ties.

October 31, 2013 – Reset cast iron monument after road construction. Verified location of corner by Static GPS methods. Updated ties.

March 3, 2016 – Found cast iron monument flush with the surface and updated ties.

October 30, 2020 – Found cast iron monument flush with the surface and updated ties.