

CERTIFICATE OF LOCATION OF GOVERNMENT CORNER

County of Anoka

State of Minnesota

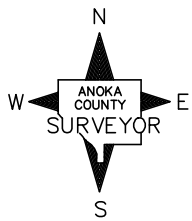
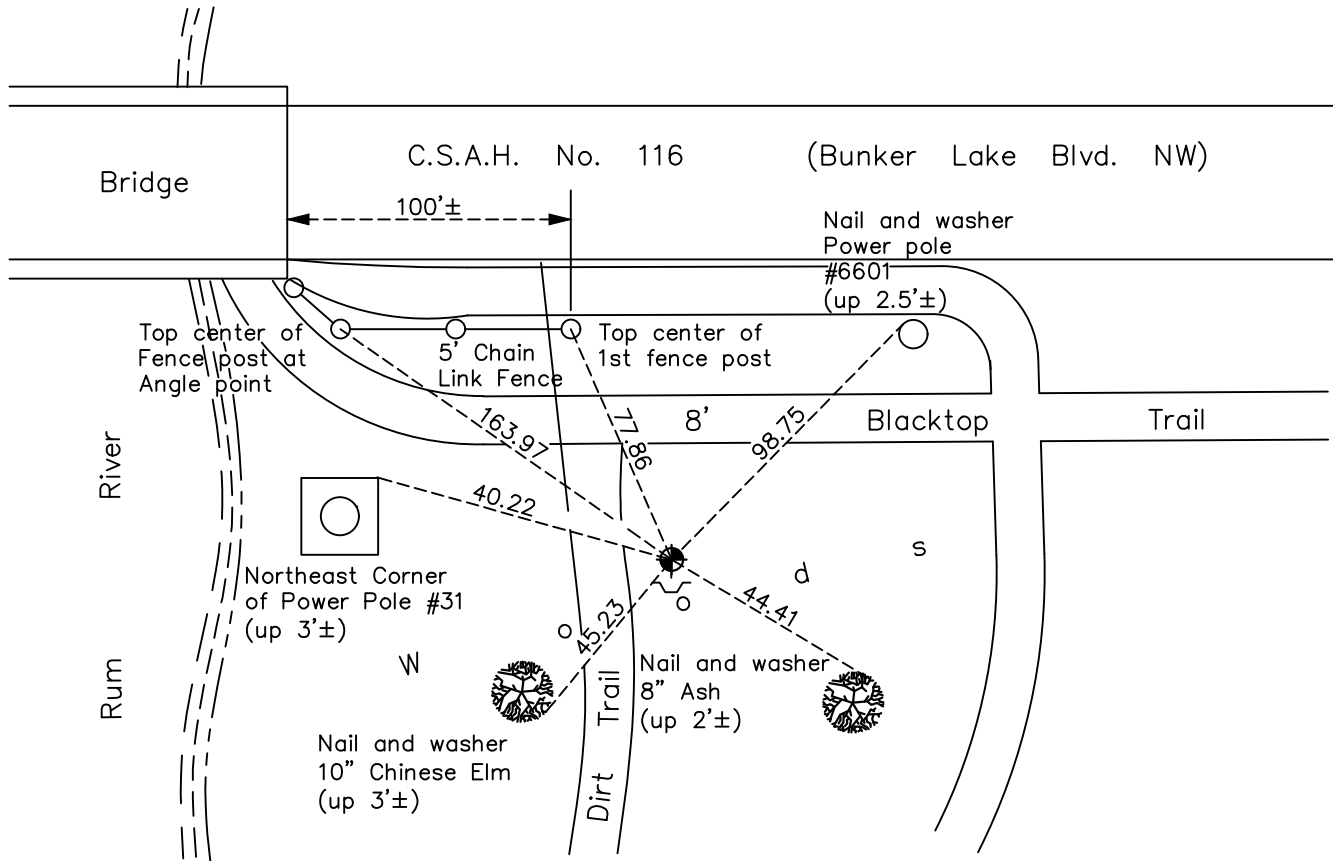
Southwest Corner of Sec. 30 Township 32 Range 24

On the 28th day of June, 1963, the described corner was evidenced by area resurvey

and to perpetuate the location of said corner, at the exact location thereof, a permanent marker was placed consisting of a cast iron monument

AND on the 30th day of October, 2020, said permanent marker was found down 0.1'± and sign previously noted on South side missing. Ties were updated.

Updated reference ties are as shown below.



Revision Date
 02/16/21

N.A.D. 1983 Coordinates
 (1996 Adjustment)

County Project Coordinates	
Northing	169840.5911
Easting	468558.0321
Date	4/11/00

I hereby certify that this United States public land survey monument record is correct and complete to the best of my knowledge and belief.

David M Zieglsmeier Date 8/2/21

David M. Zieglsmeier, Anoka County Surveyor
 Minnesota License Number 46179

HISTORY OF GOVERNMENT CORNER

Page No. 110

County of Anoka

State of Minnesota

Southwest Corner of Sec. 30 Township 32 Range 24

CORNER HISTORY:

June 28, 1963 – Set cast iron monument flush with the surface using area resurvey and established ties to monument.

August 26, 1964 – Found cast iron monument and updated ties.

July 25, 1968 – Found cast iron monument and updated ties.

July 13, 1972 – Found cast iron monument down $0.1'\pm$ and updated ties.

June 9, 1976 – Found cast iron monument and updated ties.

June 11, 1979 – Found cast iron monument and updated ties.

June 21, 1982 – Found cast iron monument and updated ties.

August 9, 1988 – Found cast iron monument and updated ties.

May 5, 1992 – Reset cast iron monument flush with surface after road construction. Updated ties and set sign and post on south side of monument.

July 26, 1993 – Found cast iron monument and updated ties.

April 11, 2000 – Found cast iron monument and established NAD 1983 (1996 Adjustment) Anoka County Project Coordinates by Static GPS methods. Updated ties.

October 22, 2010 – Found cast iron monument down $0.1'\pm$ with sign and post on south side and updated ties.

March 3, 2016 – Found cast iron monument down $0.1'\pm$ with sign and post on south side and updated ties.

October 30, 2020 – Found cast iron monument down $0.1'\pm$ and updated ties.