

# CERTIFICATE OF LOCATION OF GOVERNMENT CORNER

County of Anoka

State of Minnesota

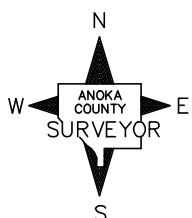
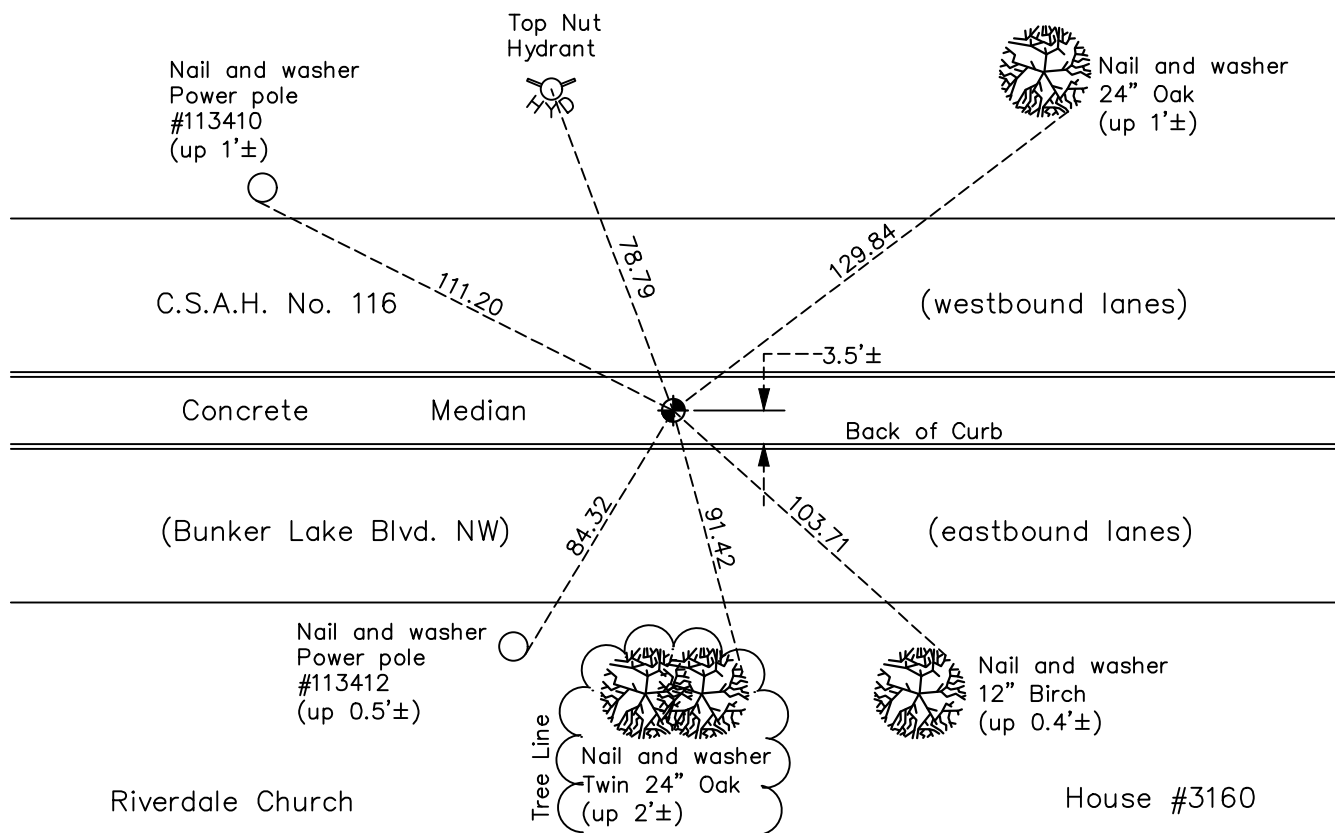
## East 1/4 Corner of Sec. 32 Township 32 Range 24

On the 30th day of September, 1959, the described corner was evidenced by a granite monument

and to perpetuate the location of said corner, at the exact location thereof, a permanent marker was placed consisting of a cast iron monument

AND on the 13th day of October, 2020, said permanent marker was found flush with the surface and the ties were updated

Updated reference ties are as shown below.



Revision Date  
03/18/2021

N.A.D. 1983 Coordinates  
(1996 Adjustment)

County Project Coordinates	
Northing	167184.9157
Easting	479222.8442
Date	7/19/00

I hereby certify that this United States public land survey monument record is correct and complete to the best of my knowledge and belief.

*David M Zieglermeier* Date 8/2/21

David M. Zieglermeier, Anoka County Surveyor  
Minnesota License Number 46179

# HISTORY OF GOVERNMENT CORNER

County of Anoka

State of Minnesota

## East 1/4 Corner of Sec. 32 Township 32 Range 24

### **CORNER HISTORY:**

September 30, 1959 – Found granite monument with iron pipe on east side. Granite is down 0.25' and iron is down 0.1'. Established ties to monument.

August 22, 1964 – Found granite monument and updated ties.

July 23, 1968 – Found granite monument and updated ties.

July 5, 1972 – Found granite monument and updated ties.

June 11, 1976 – Found granite monument and updated ties.

August 10, 1977 – Replaced granite monument, removed by road construction, with a cast iron monument set flush with the surface. Updated ties and set P.K. nails 2.00' north and east of monument.

June 7, 1979 – Found cast iron monument and updated ties.

June 30, 1982 – Found cast iron monument and updated ties.

May 28, 1985 – Found cast iron monument and updated ties.

July 27, 1988 – Found cast iron monument and updated ties.

July 19, 1993 – Found cast iron monument and updated ties.

May 3, 1999 – Set construction ties and removed cast iron monument prior to road construction.

August 13, 1999 – Set cast iron monument after road construction using construction ties. Updated ties.

July 19, 2000 – Found cast iron monument and established NAD 1983 (1996 Adjustment) Anoka County Project Coordinates by Static GPS methods. Updated ties.

October 11, 2010 – Found cast iron monument flush with the surface and updated ties.

March 3, 2016 – Found cast iron monument flush with the surface and updated ties.

October 13, 2020 – Found cast iron monument flush with the surface and updated ties.